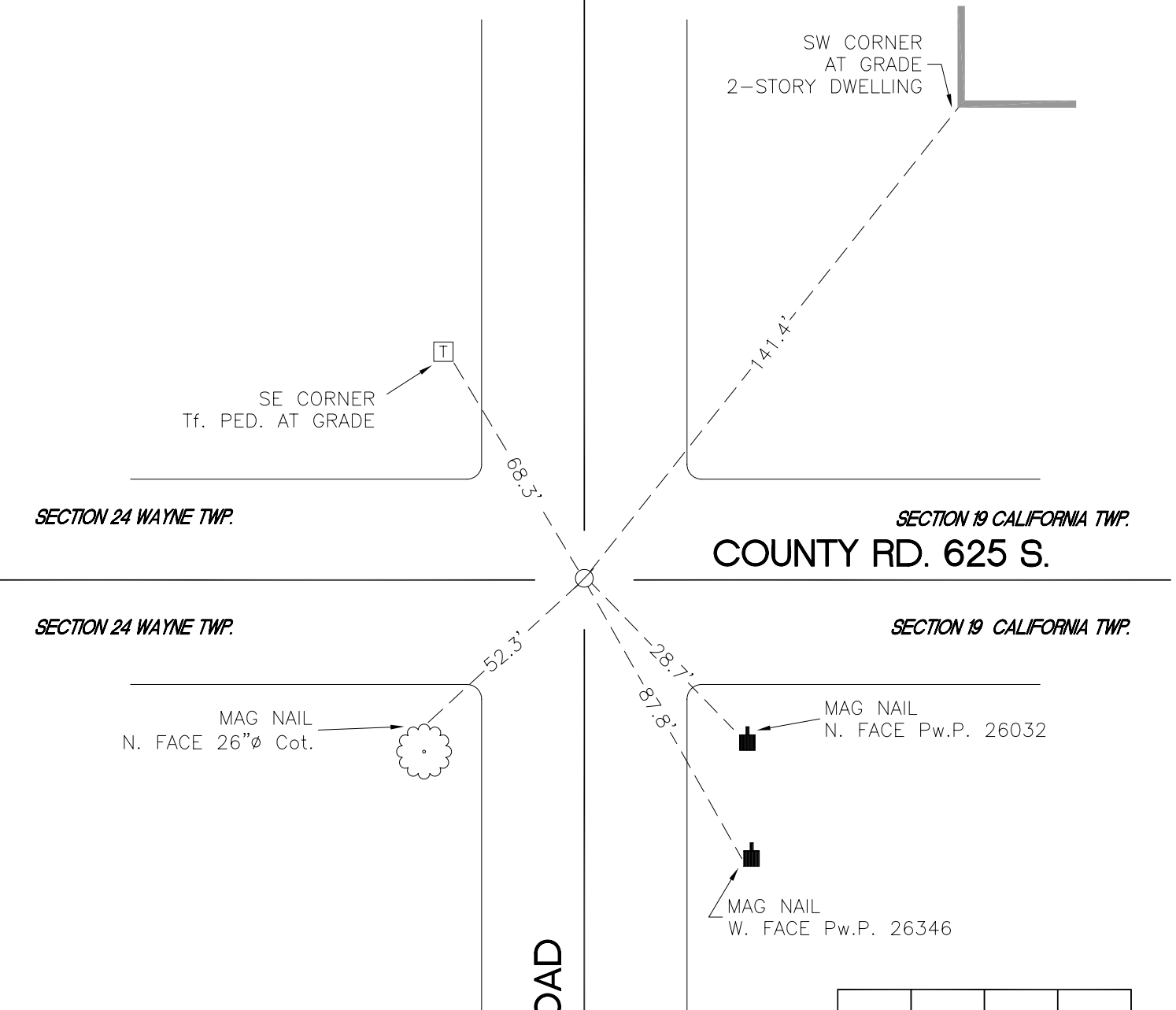


CALIFORNIA TOWNSHIP

T 32 N, R 2 W

O1



SE CORNER
Tf. PED. AT GRADE

SW CORNER
AT GRADE
2-STORY DWELLING

SECTION 24 WAYNE TWP.

SECTION 19 CALIFORNIA TWP.

COUNTY RD. 625 S.

SECTION 24 WAYNE TWP.

SECTION 19 CALIFORNIA TWP.

MAG NAIL
N. FACE 26"Ø Cot.

MAG NAIL
N. FACE Pw.P. 26032

MAG NAIL
W. FACE Pw.P. 26346

RANGE ROAD

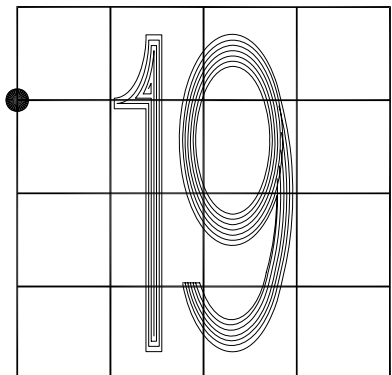
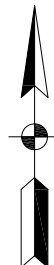
MONUMENT: RR SPIKE 4" BELOW GRADE

CORNER OF: RECORD USE

PARTY: DPS/JL

DATE: 7/16/14

COMMENTS: MONUMENT IS 2' S OF C/L OF 625 S
AND 3' E OF C/L OF RANGE ROAD.
FOUND IN 2003 BY VHJ/COD



CORNER LOCATION IN THE SECTION

O1