

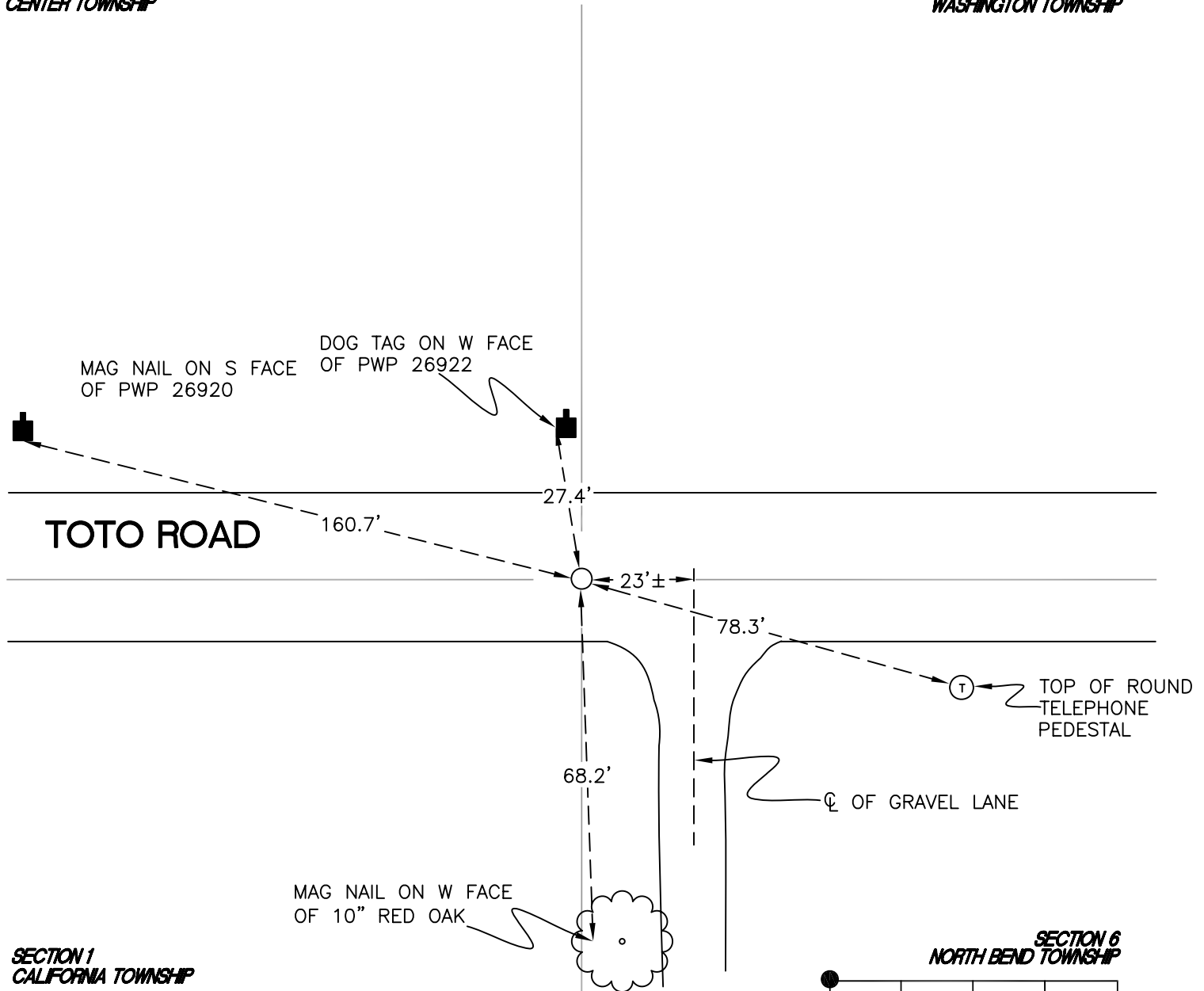
NORTH BEND TOWNSHIP

T 32 N, R 1 W

A1

SECTION 36
CENTER TOWNSHIP

SECTION 31
WASHINGTON TOWNSHIP



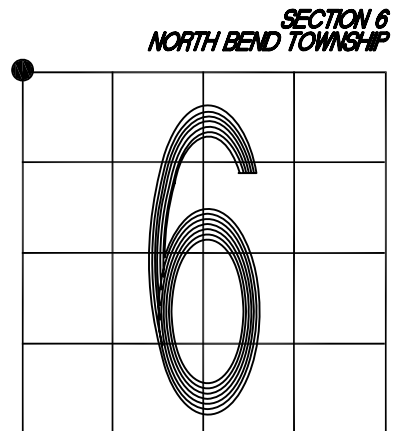
MONUMENT: 3/4" IRON PIPE

CORNER OF: RECORD USE

PARTY: VHJ/JL

DATE: 2/12/2013

COMMENTS: TOP OF PIPE IS CRUSHED
2" BELOW GRADE; 2.5' S OF CL OF TOTO ROAD.
FOUND BY RLP IN 1983 AND JL/PM IN 2008.



CORNER LOCATION IN THE SECTION

A1