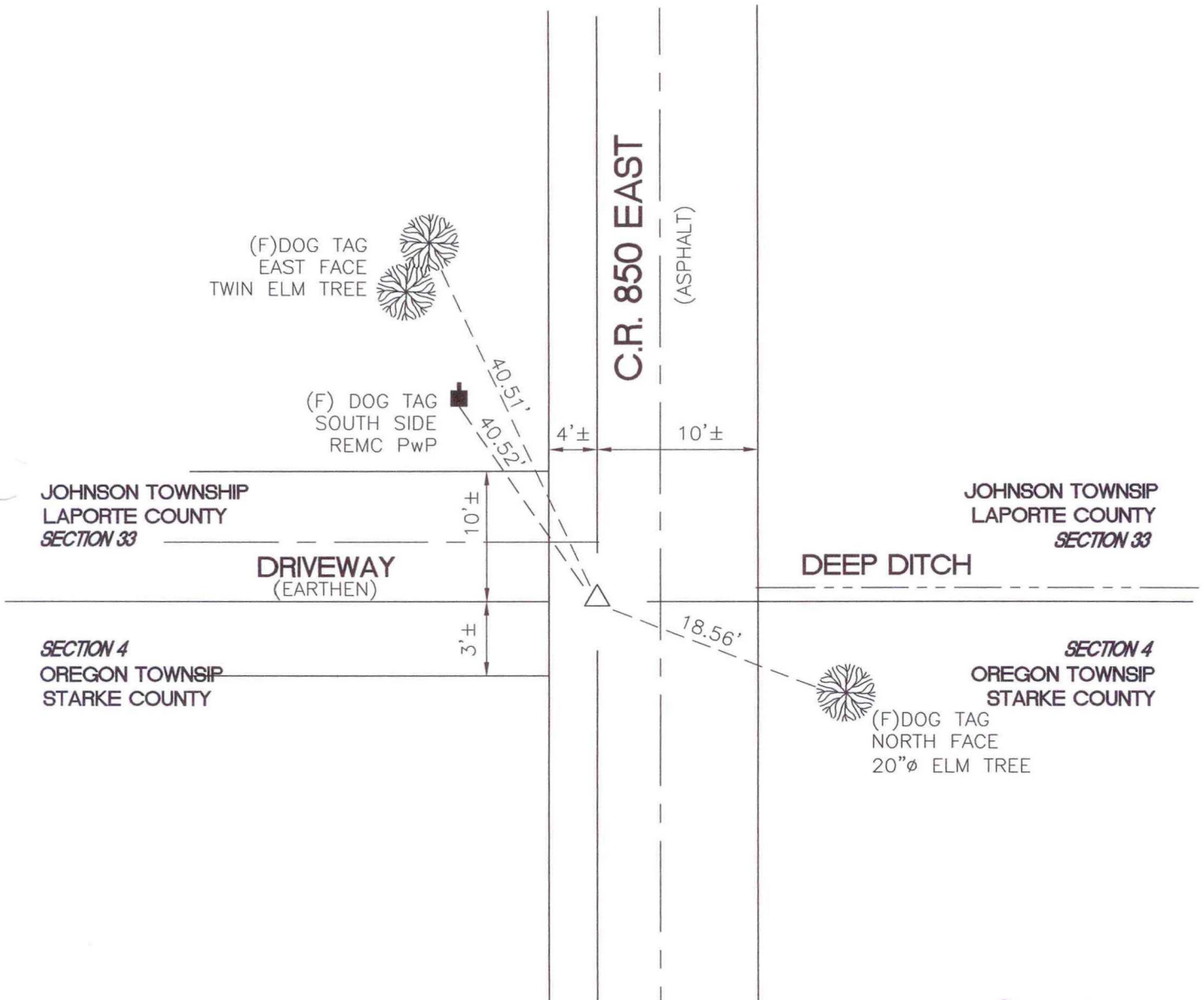


OREGON TOWNSHIP

T 34 N, R 1 W



MONUMENT: (F) IRON MONUMENT 4" BELOW GRADE

CORNER OF: RECORD USE

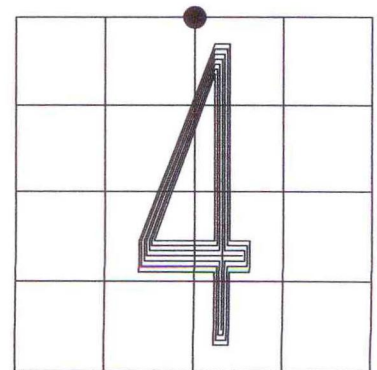
PARTY: VHJ/COD

DATE: 3-28-05

COMMENTS:
 HISTORY: MONUMENT FOUND PREVIOUSLY
 IN 1976 BY CBW/WCK DOCUMENTED IN
 LAPORTE COUNTY CORNER RECORDS

INDEX NUMBER

A11



CORNER LOCATION IN THE SECTION