

STARKE COUNTY SECTION CORNER RECORD

WAYNE TOWNSHIP

T 32 N, R 3 W

A11

JACKSON TWP.
SECTION 33

JACKSON TWP.
SECTION 33

**3/4" DIA. REBAR IN A
2" DIA. CAST IRON PIPE
N=2189545.888
E=3039879.492**

EAST FLANGE
OF ROAD SIGN

MAG NAIL IN SOUTH
SIDE OF PWP #24146

#5 REBAR

36.23'

14.93'

58.23'

TOTO ROAD

CHIP AND SEAL PAVEMENT

39.17'

42.47'

#5 REBAR

#5 REBAR

SECTION 4
WAYNE TWP.

SECTION 4
WAYNE TWP.

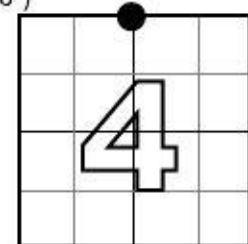
C.R. 350 W.

MONUMENT: 3/4" DIA. REBAR (SET FLUSH) IN A 2" DIA. CAST IRON PIPE (FOUND, -6")

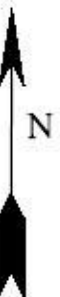
PARTY: SES / SIB DATE: 03/07/2020

HISTORY: RECOVERED 3/11/03 BY VHJ, DWC, BJ.
FIELD BOOK M-9, PAGE 41

COORDINATE DATUM: INDIANA STATE PLANE WEST NAD83(2011).
Coordinates shown on this sheet are for informational purposes only, and
are not to be use in lieu of measurements by a professional surveyor.



CORNER LOCATION
IN SECTION



NOT TO
SCALE