

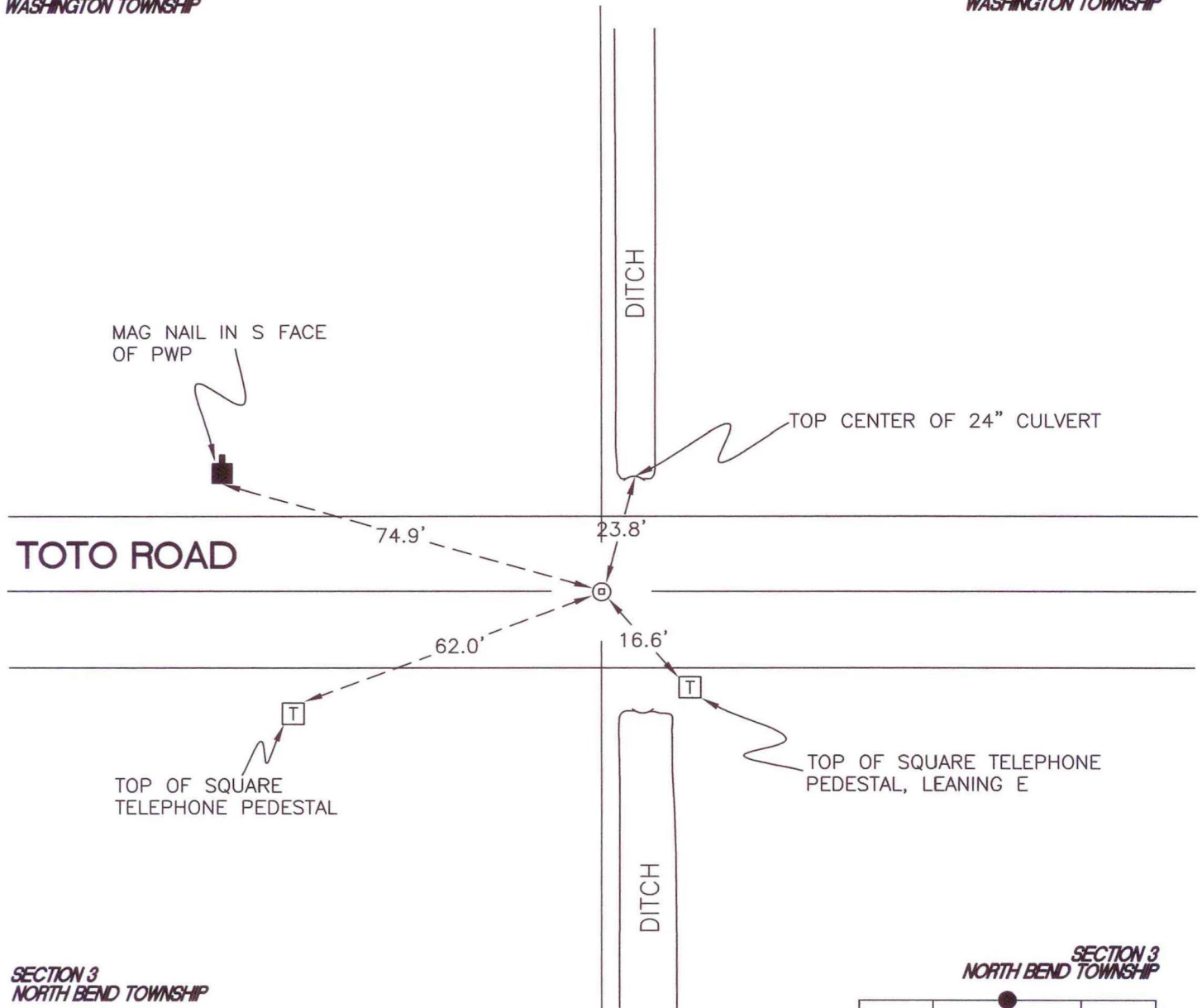
NORTH BEND TOWNSHIP

T 32 N, R 1 W

A15

SECTION 34
WASHINGTON TOWNSHIP

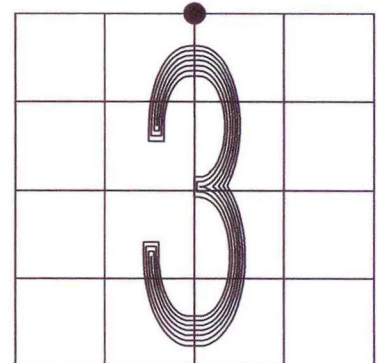
SECTION 34
WASHINGTON TOWNSHIP



SECTION 3
NORTH BEND TOWNSHIP

SECTION 3
NORTH BEND TOWNSHIP

MONUMENT: RR CROSSING BOLT w/ PUNCH MARK
 CORNER OF: RECORD USE
 PARTY: JL/PM
 DATE: 7-9-2008
 COMMENTS:



CORNER LOCATION IN THE SECTION

A15