

# DAVIS TOWNSHIP

## T 34 N, R 2 W

SECTION 34-35-2

SECTION 35-35-2

LAPORTE COUNTY

1200 S

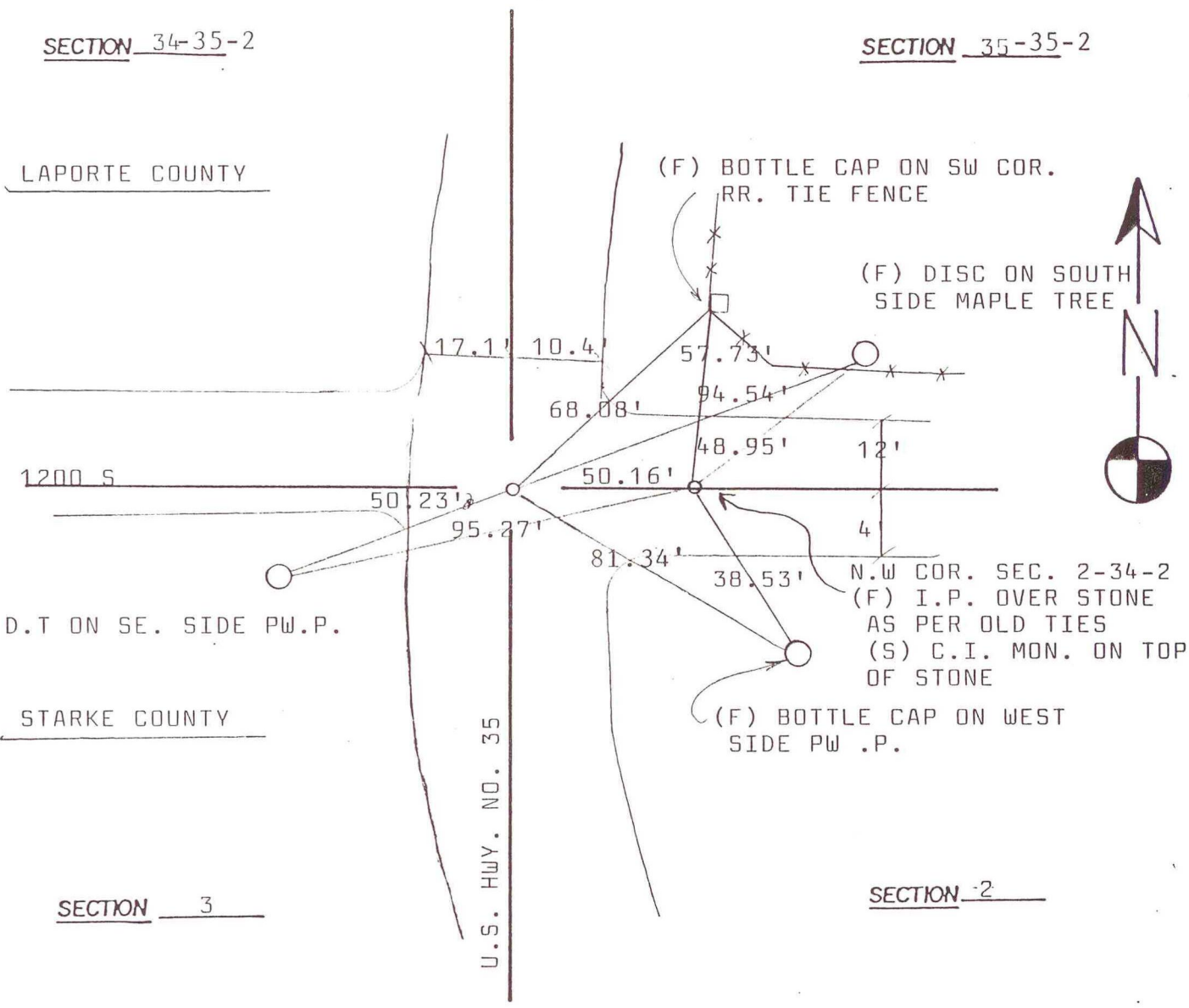
D.T ON SE. SIDE PW.P.

STARKE COUNTY

SECTION 3

U.S. HWY. NO. 35

SECTION 2



DATE	BY	DATE	BY
10-4-89	SCT, KDC		

CORNER OF: RECORD  USE

SOURCE OF INFORMATION:  
 SET MON. IN CONC. 50.16' WEST OF THE  
 NW COR. SEC. 2-34-2 AS PER GOV. DIST-  
 ANCE OF 76 LINKS BOOK 261 PAGE 23  
 PER LAPORTE COUNTY SURVEYOR'S OFFICE

A-17