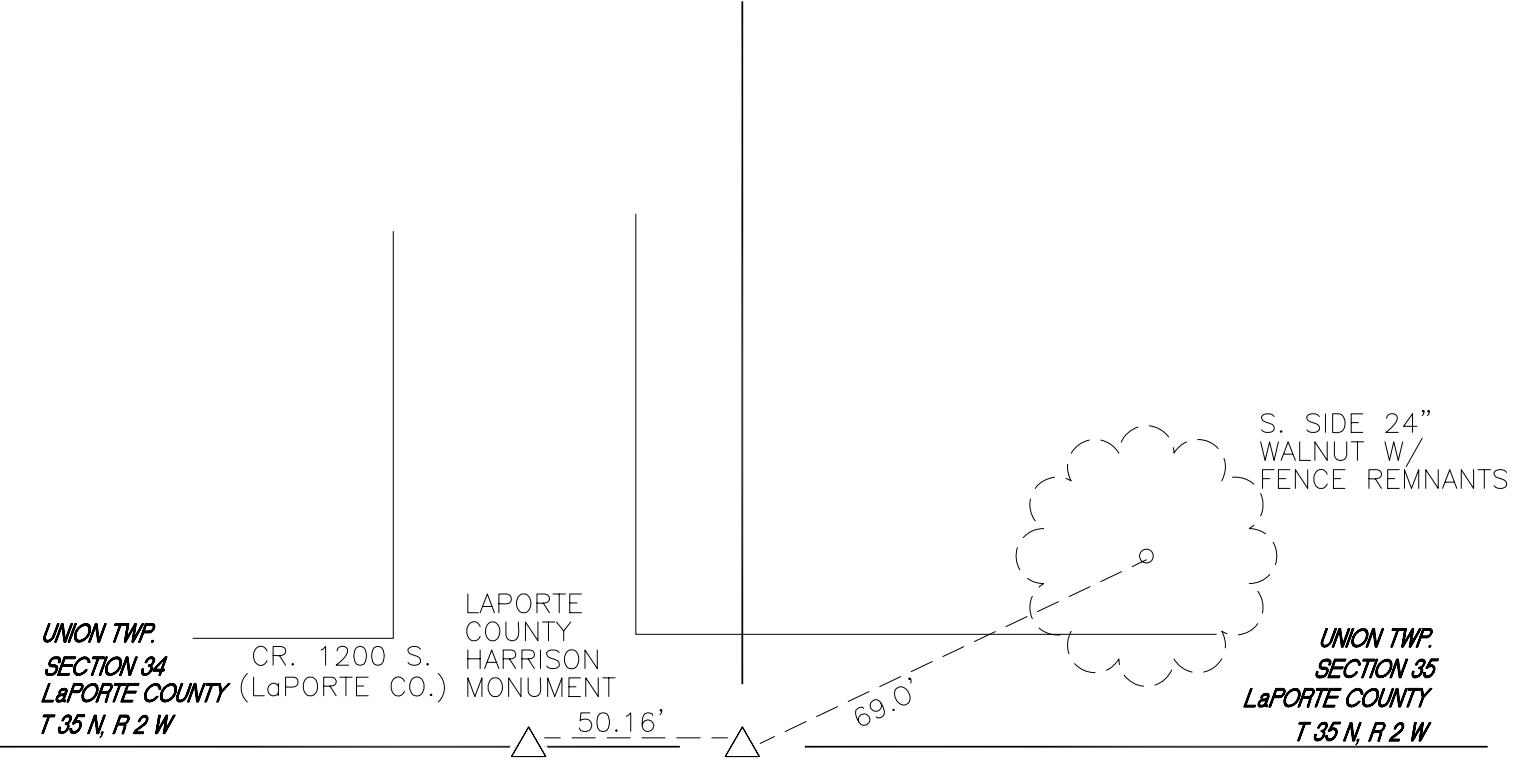


# DAVIS TOWNSHIP

## T 34 N, R 2 W



UNION TWP.  
SECTION 34  
LaPORTE COUNTY  
T 35 N, R 2 W

CR. 1200 S.  
(LaPORTE CO.)

LAPORTE  
COUNTY  
HARRISON  
MONUMENT

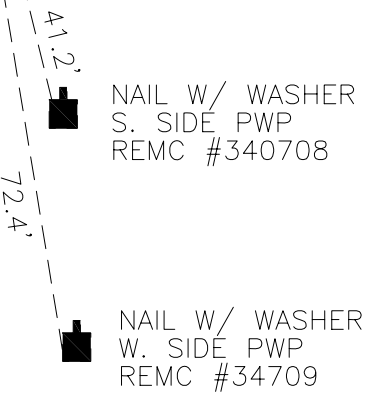
UNION TWP.  
SECTION 35  
LaPORTE COUNTY  
T 35 N, R 2 W

SECTION 3

CR. 900 N.

SECTION 2

US HWY 35



MONUMENT: "X" SET CENTER OF BROKE OFF CI MON.

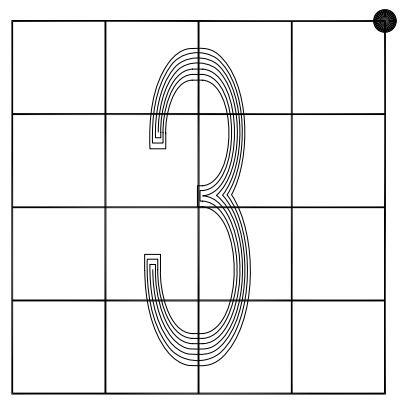
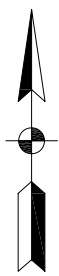
CORNER OF: RECORD  USE

PARTY: DPS/AJR

DATE: JULY 2017

COMMENTS: 2.5' S. OF CL CR. 900N.  
C.I. MONUMENT WAS SET IN 1976  
ON TOP OF STONE AND REPLACED  
IRON PIPE OVER STONE IN 1989

INDEX NUMBER  
**A17**



CORNER LOCATION IN THE SECTION