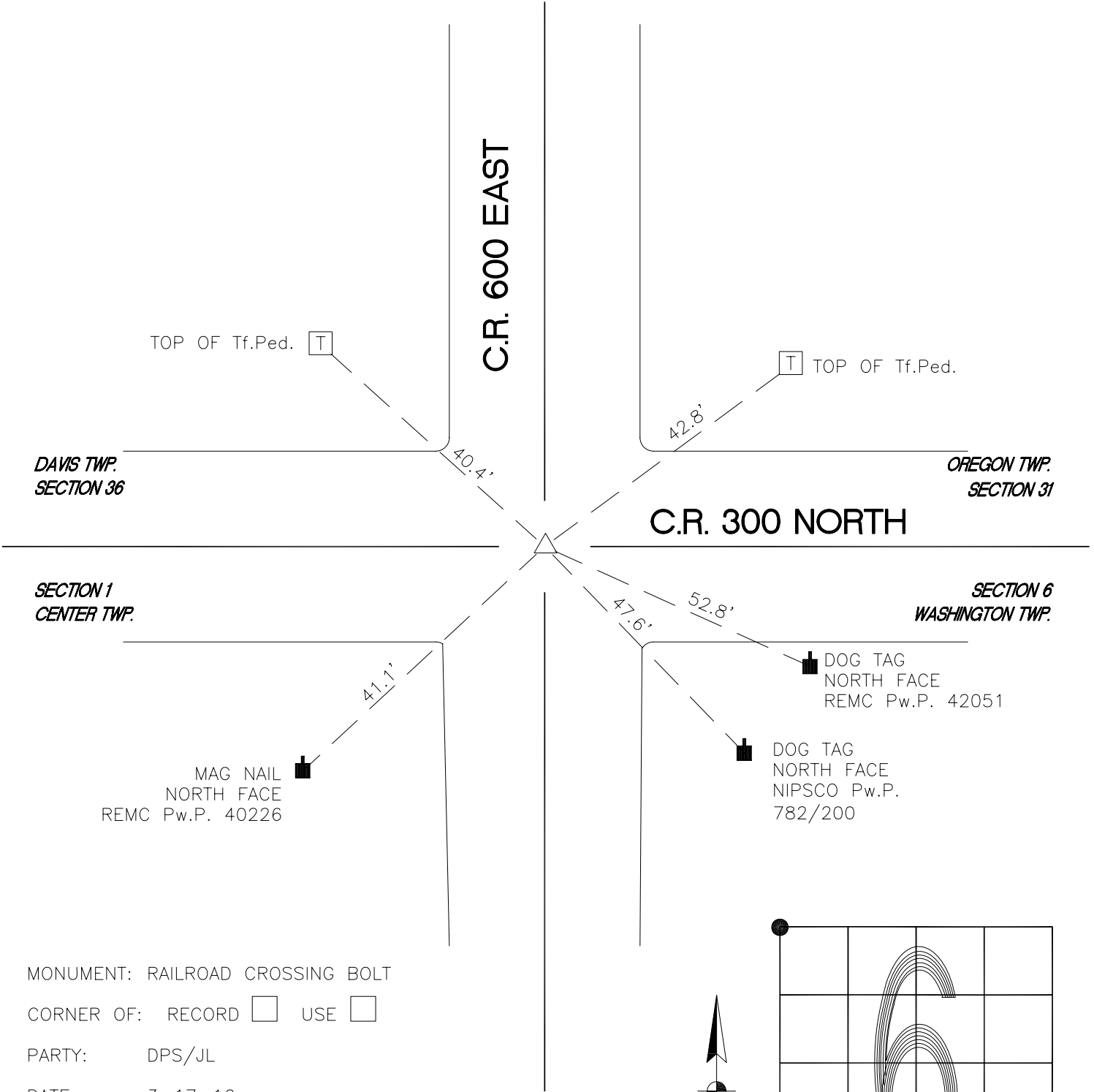


WASHINGTON TOWNSHIP

T 33 N, R 1 W

A1



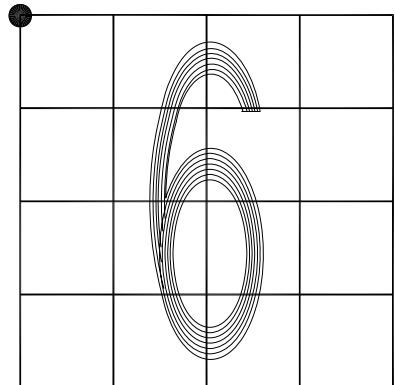
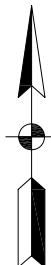
MONUMENT: RAILROAD CROSSING BOLT

CORNER OF: RECORD USE

PARTY: DPS/JL

DATE: 3-17-16

COMMENTS: FOUND BY HJC/VHJ/DPS IN 2001



A1

CORNER LOCATION IN THE SECTION