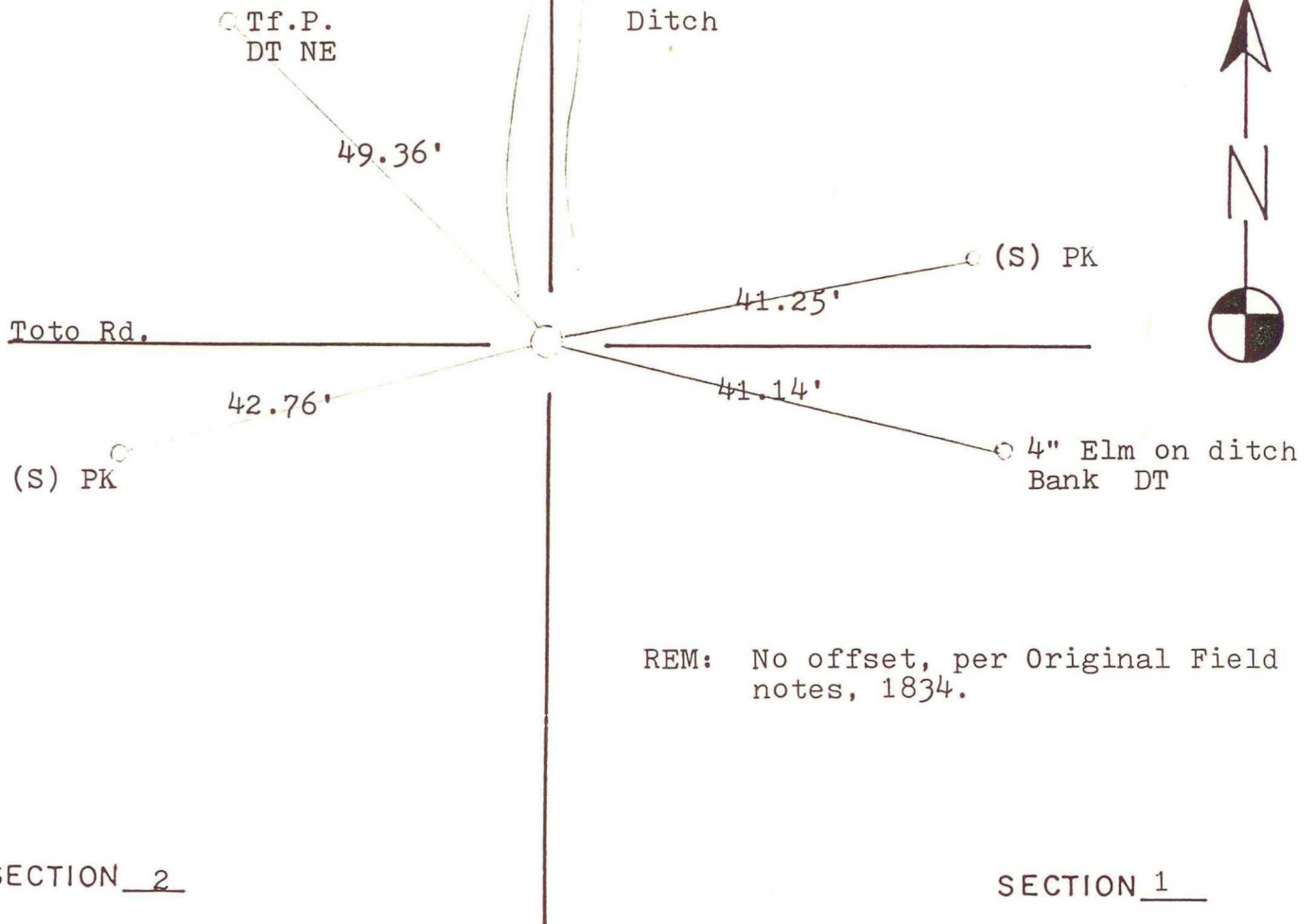


# NORTH BEND TOWNSHIP

## T 32 N, R 1 W

SECTION 35 Washington Twp.

SECTION 36 Wash.T.



REM: No offset, per Original Field notes, 1834.

SECTION 2

SECTION 1

DATE	BY	DATE	BY
20Jul1983	RLP		

CORNER OF: RECORD  USE

SOURCE OF INFORMATION:

Field Book M-6, page 3