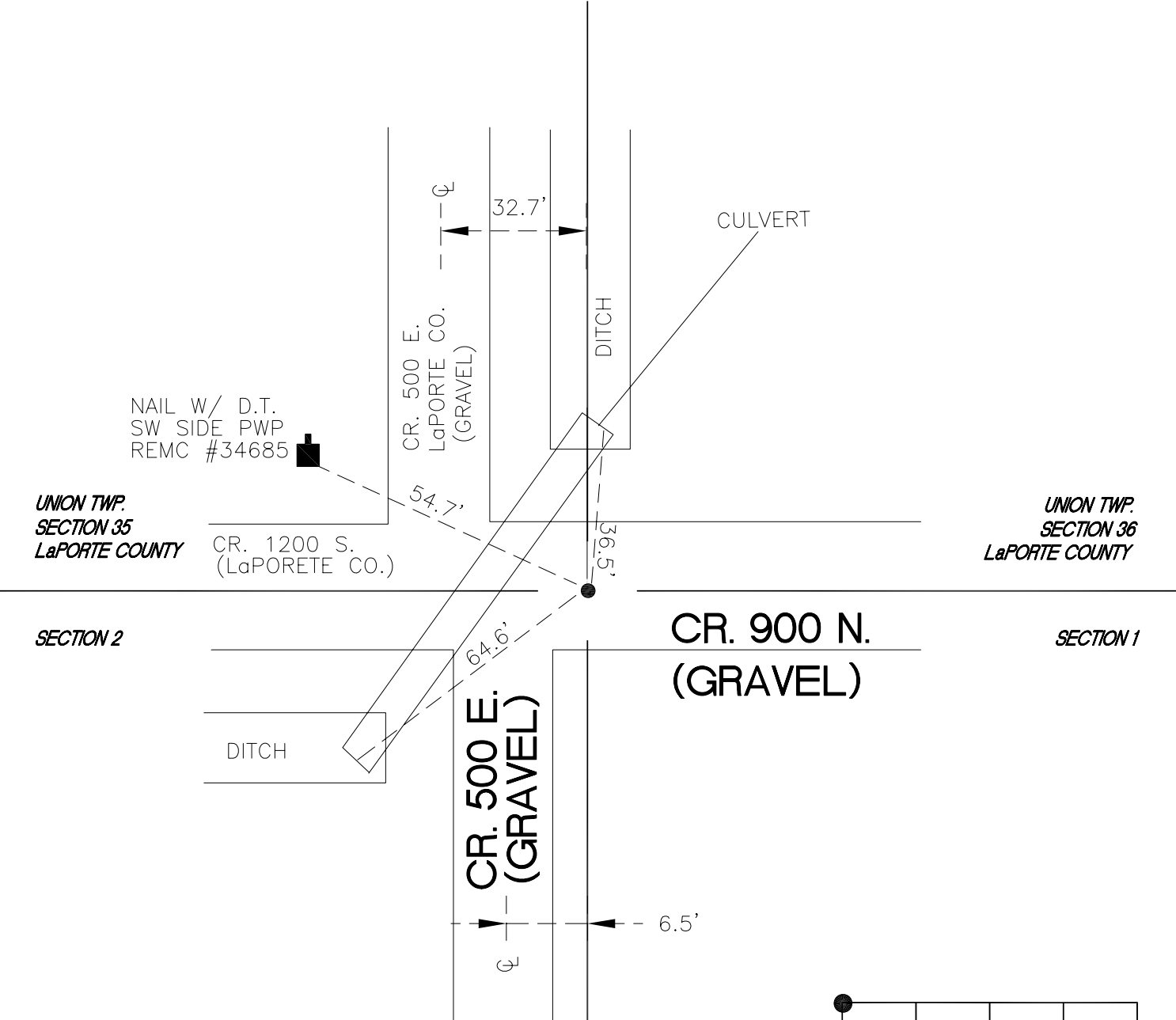


DAVIS TOWNSHIP

T 34 N, R 2 W



NAIL W/ D.T.
SW SIDE PWP
REMC #34685

UNION TWP.
SECTION 35
LaPORTE COUNTY

CR. 1200 S.
(LaPORETE CO.)

UNION TWP.
SECTION 36
LaPORTE COUNTY

SECTION 2

CR. 900 N.
(GRAVEL)

SECTION 1

CR. 500 E.
(GRAVEL)

MONUMENT: (S) CROSSING BOLT

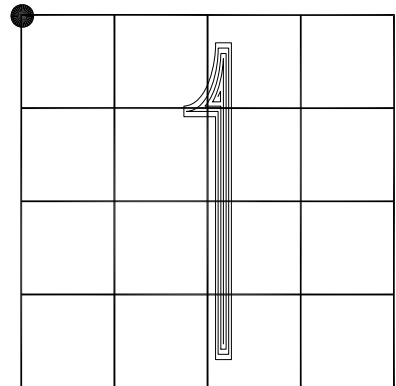
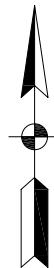
CORNER OF: RECORD USE

PARTY: DPS/AJR

DATE: JULY 2017

COMMENTS: POINT DESTROYED BY
CONSTRUCTION. REPLACED WITH
CROSSING BOLT. REFERENCED
TO JOBS P.L.S.96-138 AND
G.K.S. G03103

INDEX NUMBER
A21



CORNER LOCATION IN THE SECTION