

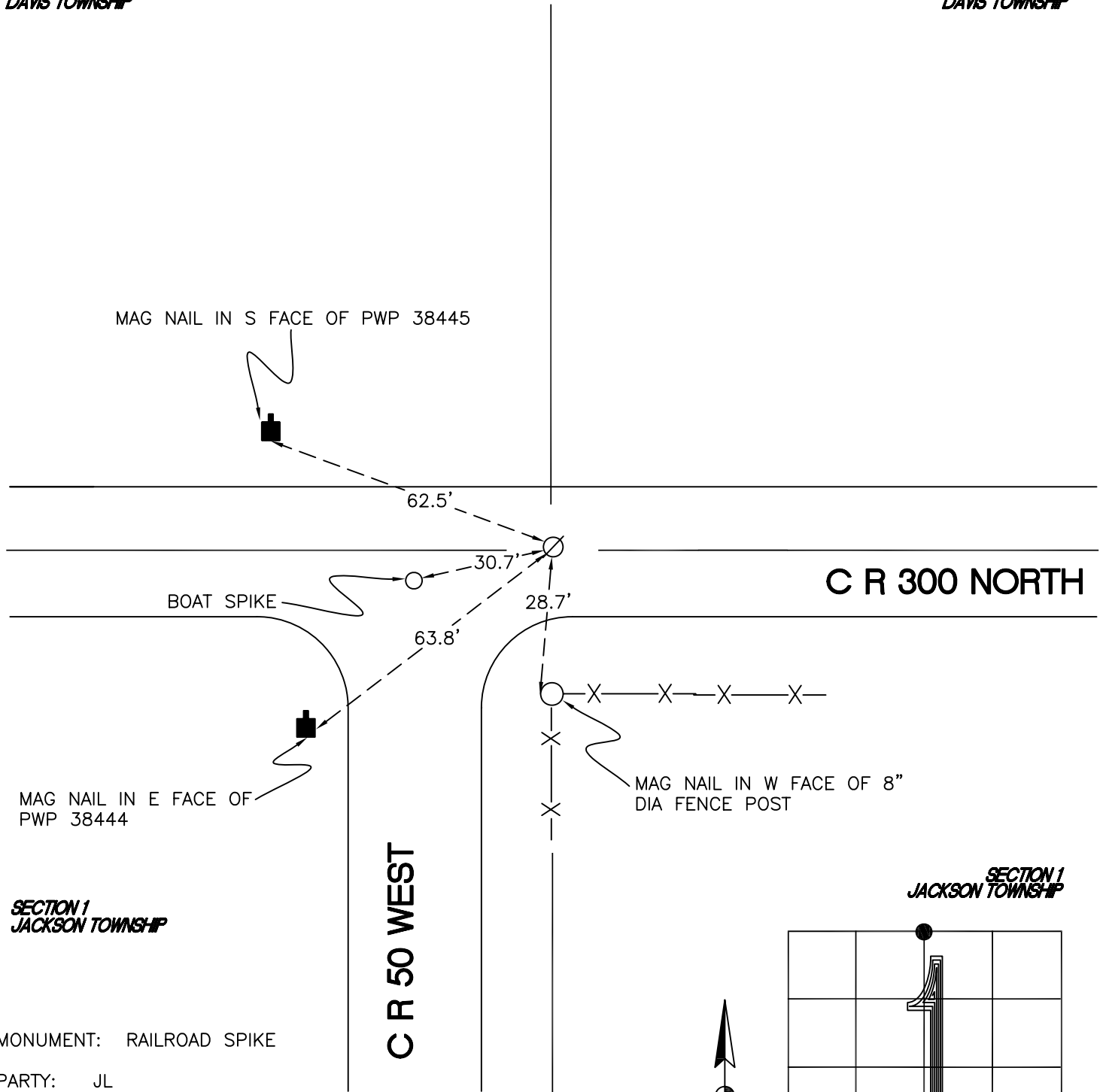
JACKSON TOWNSHIP

T 33 N, R 3 W

A23

SECTION 36
DAVIS TOWNSHIP

SECTION 36
DAVIS TOWNSHIP



SECTION 1
JACKSON TOWNSHIP

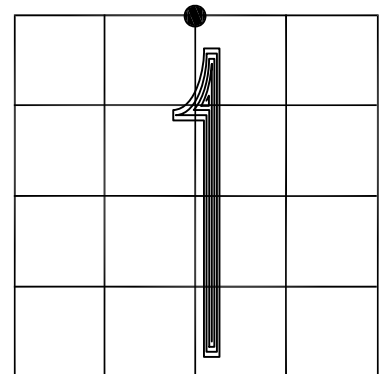
SECTION 1
JACKSON TOWNSHIP

MONUMENT: RAILROAD SPIKE

PARTY: JL

DATE: 5-24-16

COMMENTS: MONUMENT SET BY GRAND KANKAKEE SURVEY IN 2003. USED BY TERRITORIAL ENGINEERING IN DOCUMENT NUMBER 2011001071.



CORNER LOCATION IN THE SECTION

A23