

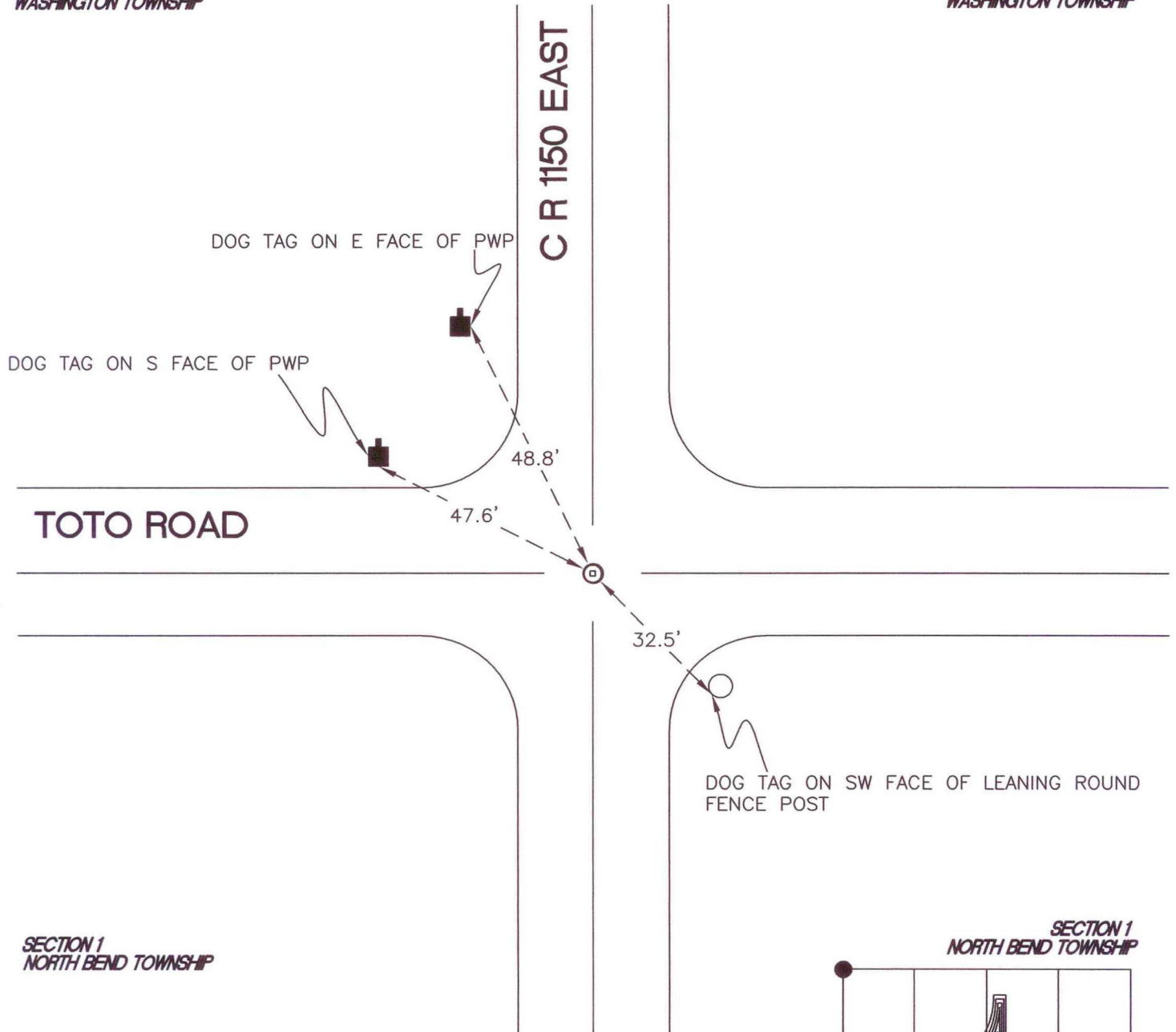
NORTH BEND TOWNSHIP

T 32 N, R 1 W

A23

SECTION 36
WASHINGTON TOWNSHIP

SECTION 36
WASHINGTON TOWNSHIP



SECTION 1
NORTH BEND TOWNSHIP

SECTION 1
NORTH BEND TOWNSHIP

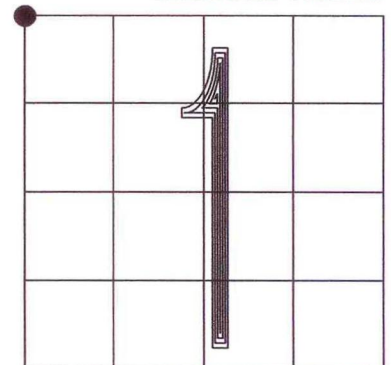
MONUMENT: RR CROSSING BOLT INSIDE 2" IRON PIPE

CORNER OF: RECORD USE

PARTY: JL/PM

DATE: 7-9-2008

COMMENTS: 2' S OF \odot OF TOTO ROAD



CORNER LOCATION IN THE SECTION

A23