

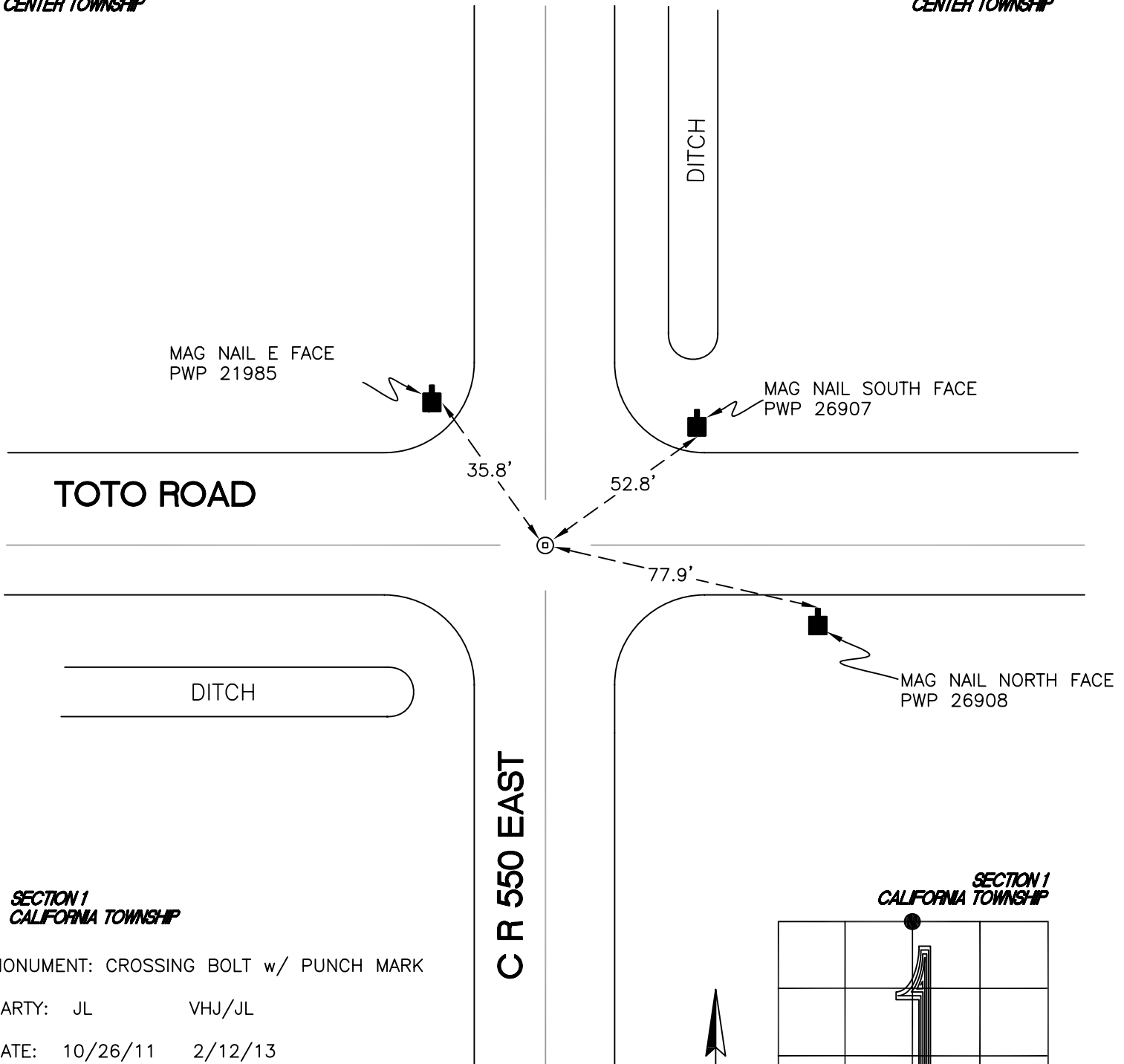
CALIFORNIA TOWNSHIP

T 32 N, R 2 W

A23

SECTION 36
CENTER TOWNSHIP

SECTION 36
CENTER TOWNSHIP



SECTION 1
CALIFORNIA TOWNSHIP

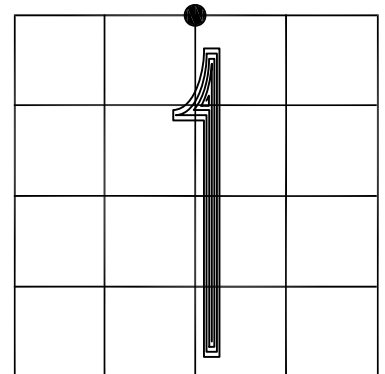
SECTION 1
CALIFORNIA TOWNSHIP

MONUMENT: CROSSING BOLT w/ PUNCH MARK

PARTY: JL VHJ/JL

DATE: 10/26/11 2/12/13

COMMENTS: 3' S OF \hat{C} OF TOTO ROAD. THIS MONUMENT WAS OBLITERATED DURING THE 2009 RE-CONSTRUCTION OF TOTO ROAD AND HAD TO BE RE-ESTABLISHED FROM PREVIOUS SURVEYS SINCE NO REFERNECE TIES REMAINED. 1997 TERRITORIAL ENGINEERING SURVEY (BOOK LL, PAGE 460) WAS HONORED TO RE-ESTABLISH THE CORNER. DISTANCE TO THE CENTER AND SW CORNER OF SECTION 36 WERE USED TO CALCULATE LOCATION. 2002 PROGRESSIVE ENGINEERING SURVEY (DOCUMENT # 2003458392) RECORDED DISTANCE TO THE CENTER OF SECTION 1 WAS WITHIN 0.1 FEET OF THE RE-ESTABLISHED LOCATION.



CORNER LOCATION IN THE SECTION

A23