

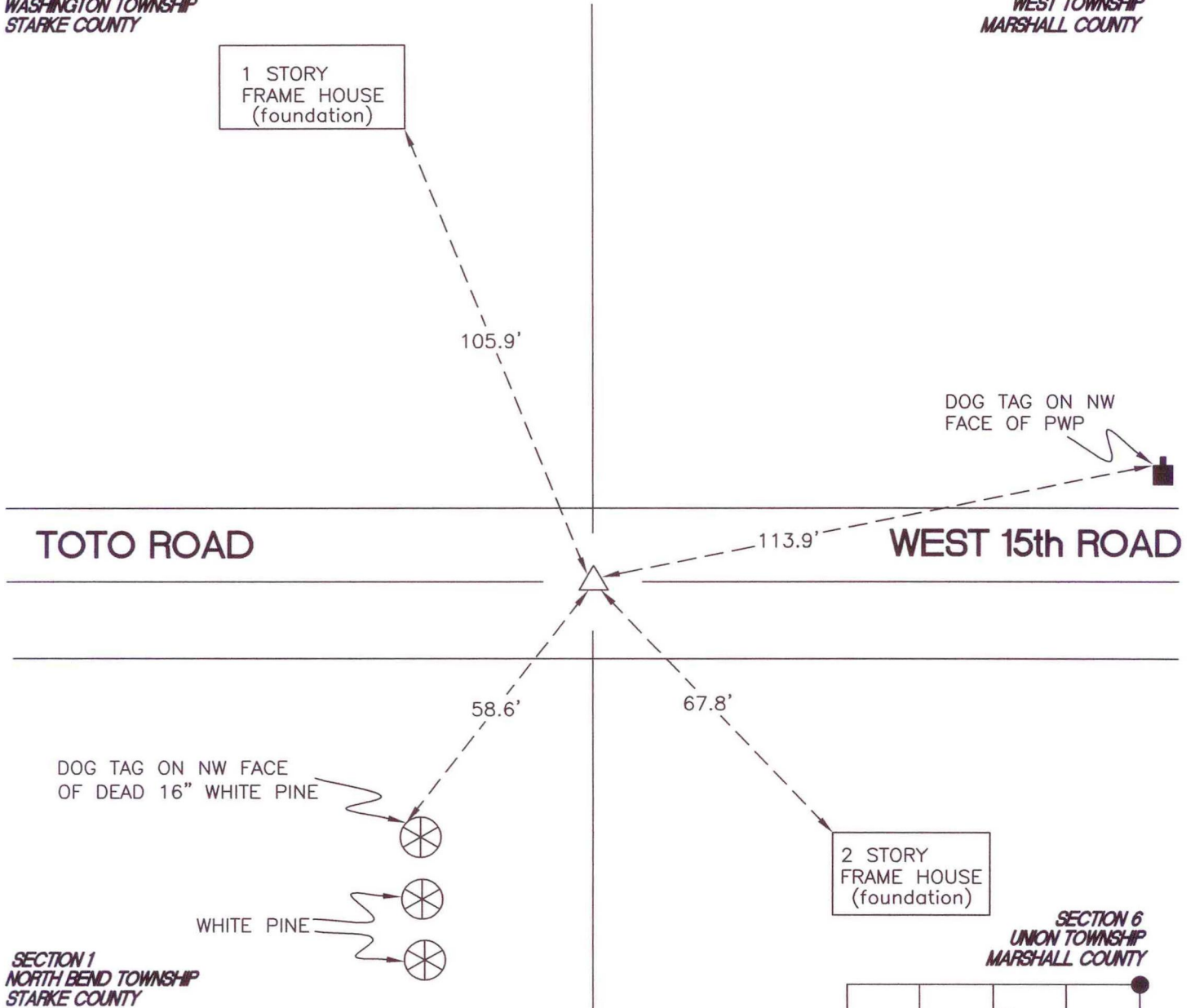
NORTH BEND TOWNSHIP

T 32 N, R 1 W

A25

SECTION 36
WASHINGTON TOWNSHIP
STARKE COUNTY

SECTION 31
WEST TOWNSHIP
MARSHALL COUNTY



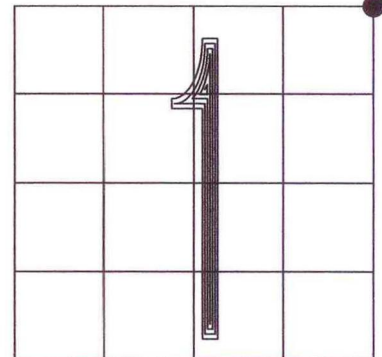
MONUMENT: ALUMINUM MONUMENT

CORNER OF: RECORD USE

PARTY: JL/PM

DATE: 8-5-2008

COMMENTS: PRIOR TO 1987 MARSHALL AND STARKE COUNTIES USED THE SAME MONUMENT WHICH WAS LOCATED ABOUT 1' W OF ALUMINUM MONUMENT. IN 1987 MARSHALL COUNTY ESTABLISHED CURRENT MONUMENT OVER A FOUND STONE. STARKE COUNTY SURVEYS PRIOR TO 1987 USED THE OLDER MONUMENT.



CORNER LOCATION IN THE SECTION

A25