

# WASHINGTON TOWNSHIP

T 33 N, R 1 W

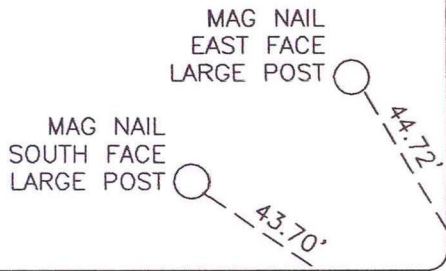
## A25

STARKE COUNTY  
OREGON TOWNSHIP  
SECTION 36

MARSHALL COUNTY  
WEST TOWNSHIP  
SECTION 31

C.R. 1200 EAST

CO. LINE ROAD



3/8" IRON PIPE  
EDGE OF PAVEMENT

C.R. 300 NORTH

WEST 9th RD

29.00'

23.41'

RR SPIKE  
EDGE OF PAVEMENT

SECTION 1  
WASHINGTON TOWNSHIP  
STARKE COUNTY

SECTION 6  
WEST TOWNSHIP  
MARSHALL COUNTY

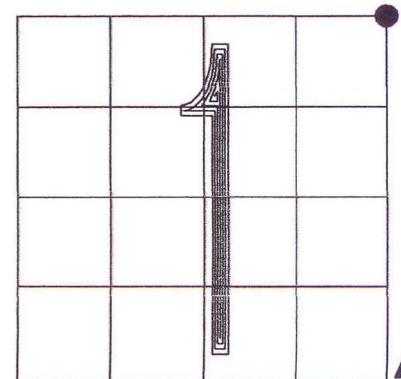
MONUMENT: ALUMINUM MONUMENT

CORNER OF: RECORD  USE

PARTY: VHJ/GR

DATE: 3-17-05

COMMENTS: 1" BELOW GRADE  
BRASS PLUG THAT WAS FOUND IN 1983  
WAS REPLACED IN 1998 WITH AN ALUMINUM  
SECTION CORNER MONUMENT BY MARSHALL COUNTY.



## A25

CORNER LOCATION IN THE SECTION