

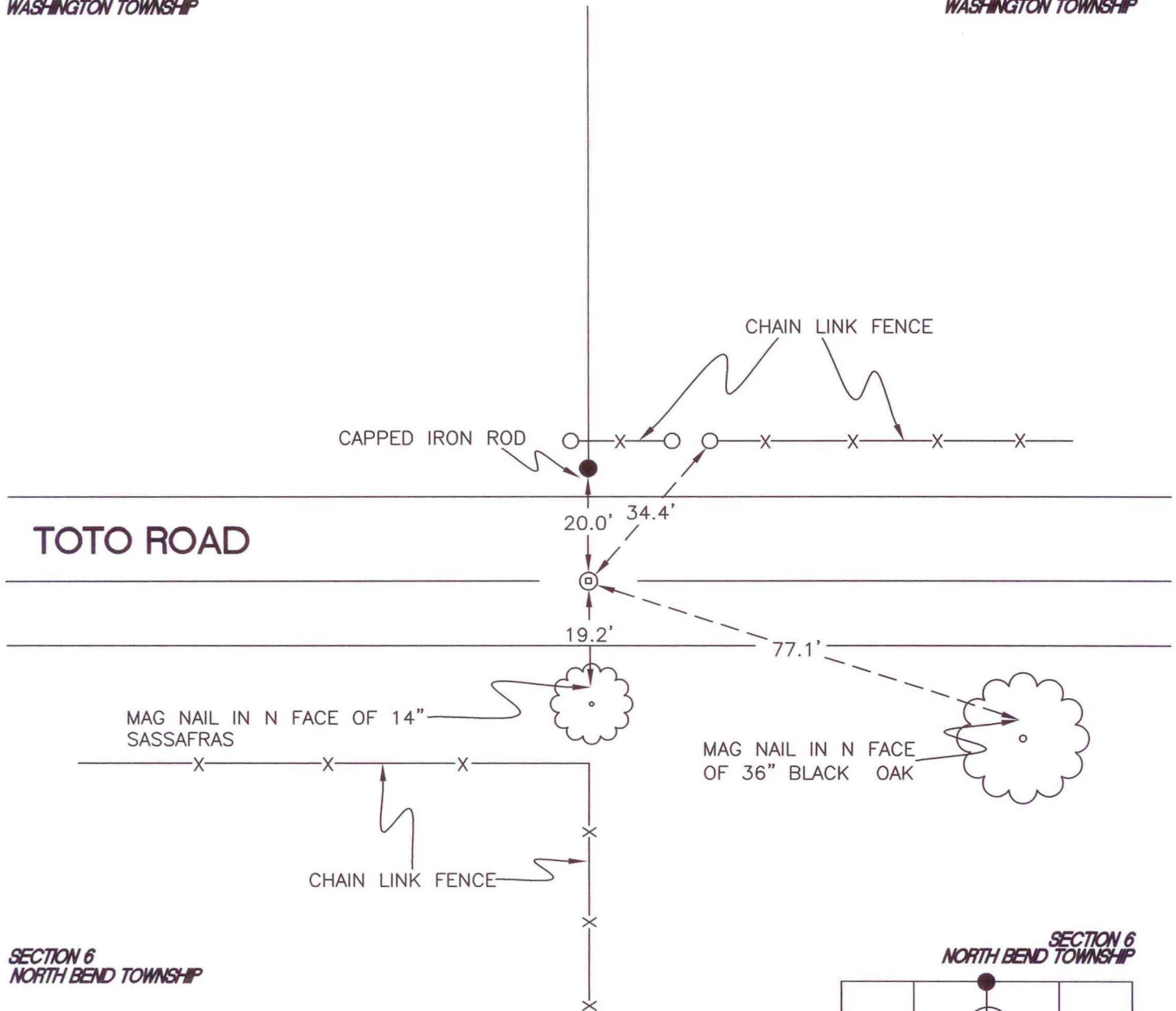
# NORTH BEND TOWNSHIP

T 32 N, R 1 W

## A3

SECTION 31  
WASHINGTON TOWNSHIP

SECTION 31  
WASHINGTON TOWNSHIP



SECTION 6  
NORTH BEND TOWNSHIP

SECTION 6  
NORTH BEND TOWNSHIP

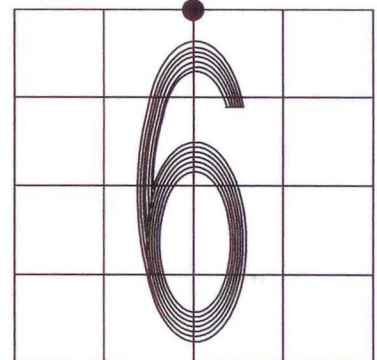
MONUMENT: RR CROSSING BOLT REPLACES RR SPIKE

CORNER OF: RECORD  USE

PARTY: JL/PM

DATE: 7-8-2008

COMMENTS: 6" S OF  $\odot$  OF TOTO ROAD



CORNER LOCATION IN THE SECTION

# A3