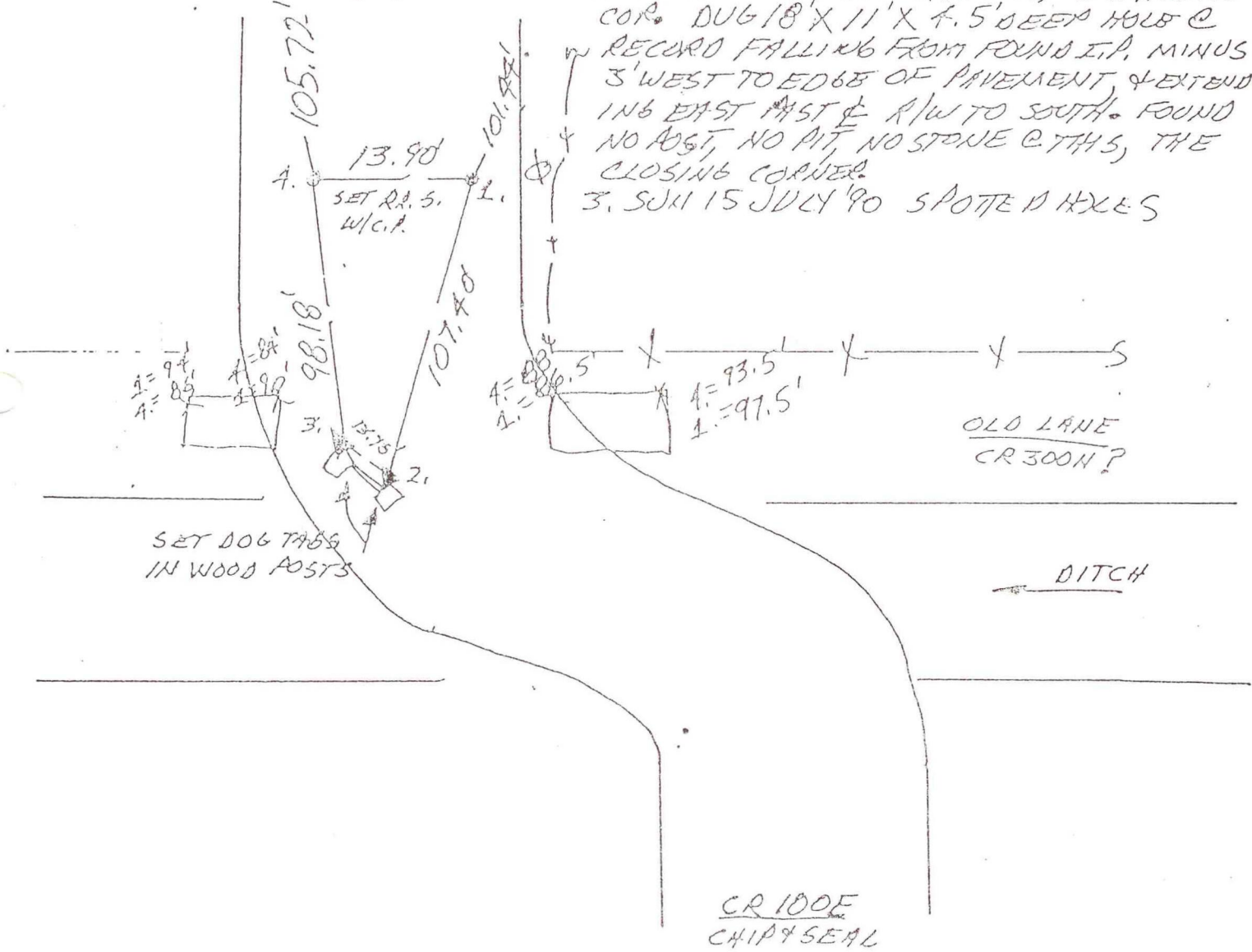


N  
↑  
NO SCALE

1. TUES 19 JUNE '90 DLA RLS 0537, P. MAYER  $\phi$ ;  
FOUND  $\approx 1\frac{1}{2}$ "  $\phi$  I.P.  $\approx$  1' DEEP @ STANDARD CORNER & NO  
METAL SOUNDING MONUMENTS @ CLOSING COR.; SET REFS.  
GOV'T. NOTES CALL FOR RECORD FALLING OF 96 LINKS OR  
63.36' EAST. FOUND I.P.'S REFS  $\rightarrow$  1. = 92.33'; 2. = 45.77' ;  
3. = 32.05' , A. = ~~EA~~ 95'
2. WED 20 JUNE '90 I.P. WAS OLD "BLACK PIPE"  $\approx$  1.5' LONG.  
DUG 10' X 7' X 4.5' DEEP HOLE DOWN THROUGH OLD SOIL BANK TO  
 $\approx$  1.5' BELOW INDISTINGUISHABLE SOIL LEVEL. HOLE  $\approx$  2' WEST OF I.P.  
& EAST EAST  $\phi$  OF R/W TO NORTH. NO POST, NO PIT, NO STONE.  
RUSSELL Mc DANIEL STOPPED & CONFIRMED "SURVEYOR'S PIT" @ STANDARD  
COR. DUG 18' X 11' X 4.5' DEEP HOLE @  
RECORD FALLING FROM FOUND I.P. MINUS  
3' WEST TO EDGE OF PAVEMENT, & EXTEND-  
ING EAST EAST  $\phi$  R/W TO SOUTH. FOUND  
NO POST, NO PIT, NO STONE @ THIS, THE  
CLOSING CORNER.
3. SUN 15 JULY '90 SPOTTED HXLES



NW. COR. SEC. 5

NO MONUMENT  
A-5  
(+Z-5 T34N)