

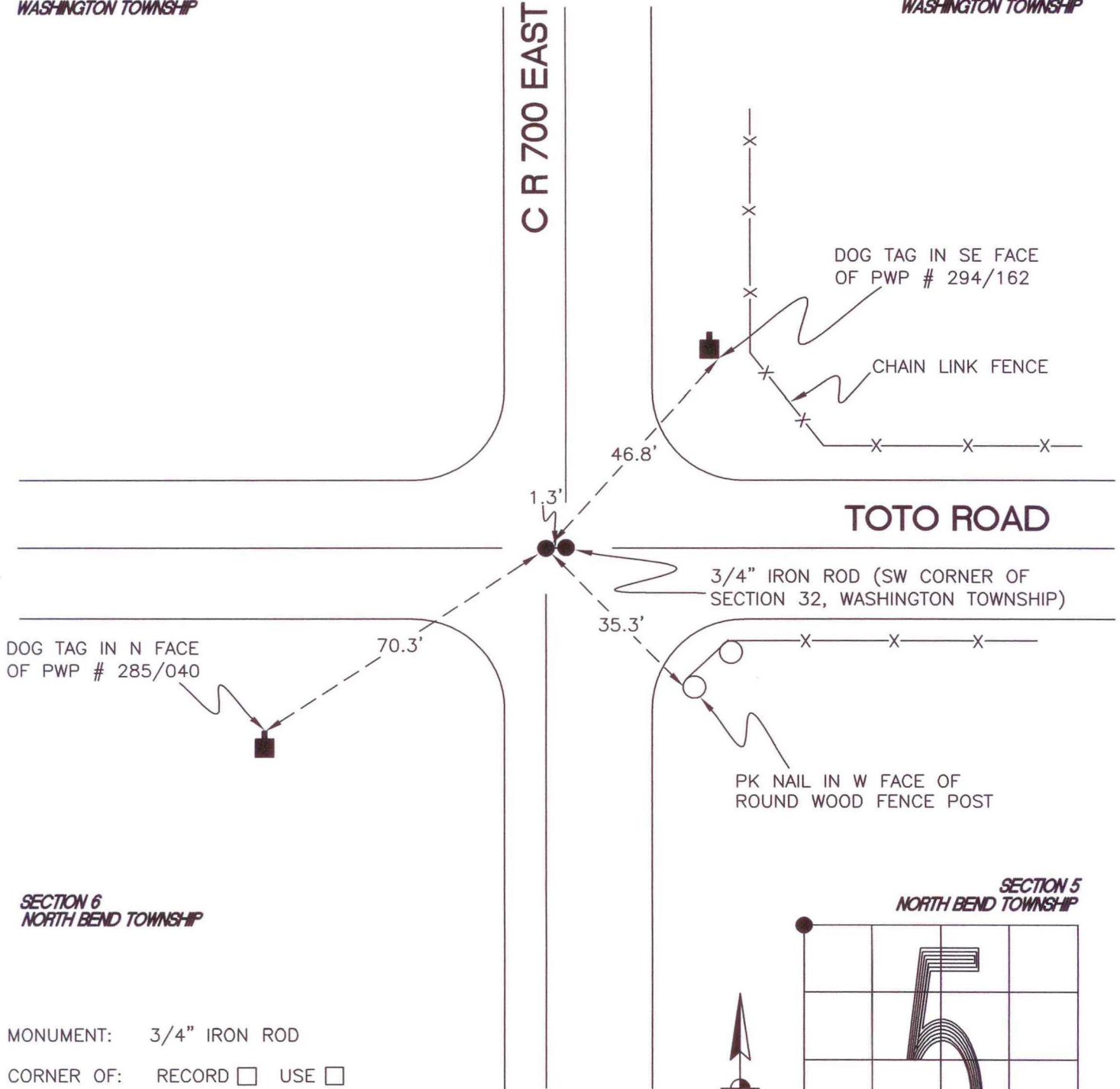
NORTH BEND TOWNSHIP

T 32 N, R 1 W

A5

SECTION 31
WASHINGTON TOWNSHIP

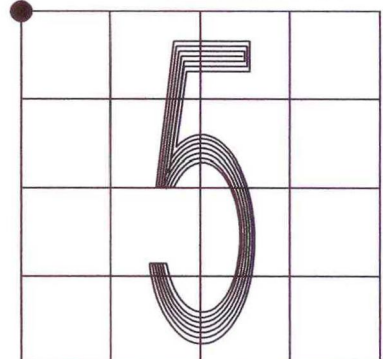
SECTION 32
WASHINGTON TOWNSHIP



SECTION 6
NORTH BEND TOWNSHIP

SECTION 5
NORTH BEND TOWNSHIP

MONUMENT: 3/4" IRON ROD
CORNER OF: RECORD USE
PARTY: JL/PM
DATE: 7-8-2008
COMMENTS: 3' W OF C OF 700E



CORNER LOCATION IN THE SECTION

A5