

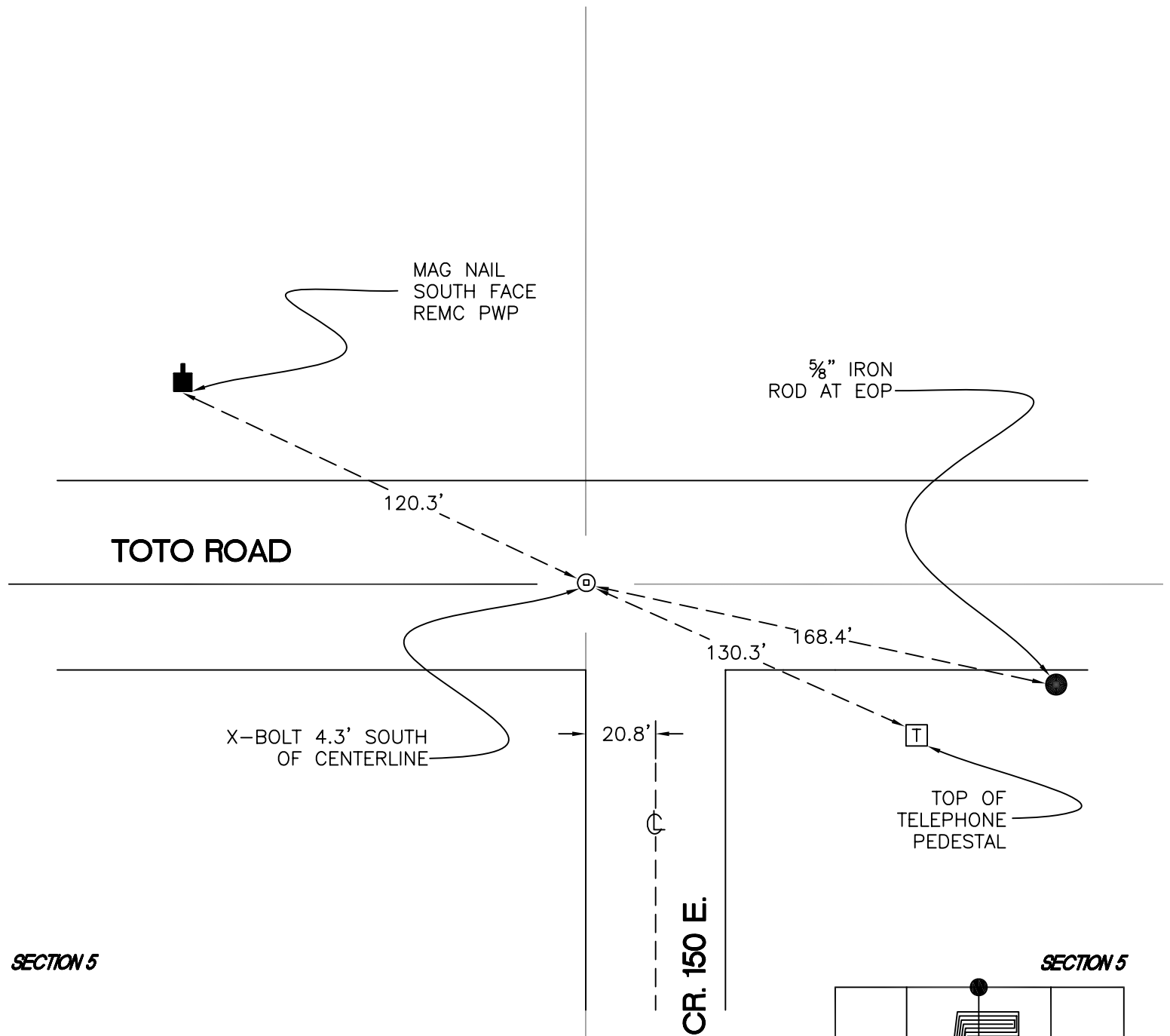
# CALIFORNIA TOWNSHIP

T 32 N, R 2 W

## A7

SECTION 32

SECTION 32



SECTION 5

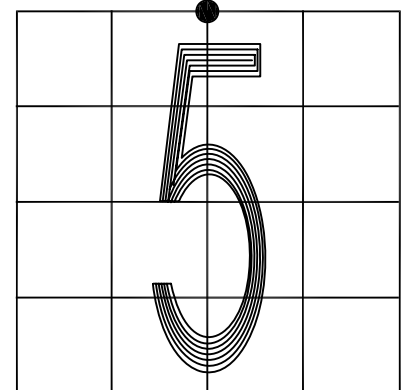
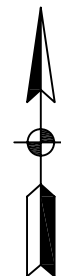
SECTION 5

MONUMENT: RAILROAD CROSSING BOLT

PARTY: JL/AO

DATE: 7/9/12

COMMENTS: Toto road was repaved in the fall of 2009, obliterating the monument. Monument established from Bradley S Cramer survey recorded in record book LL, page 181. Found in 2010 by DPS/REZ



CORNER LOCATION IN THE SECTION

## A7