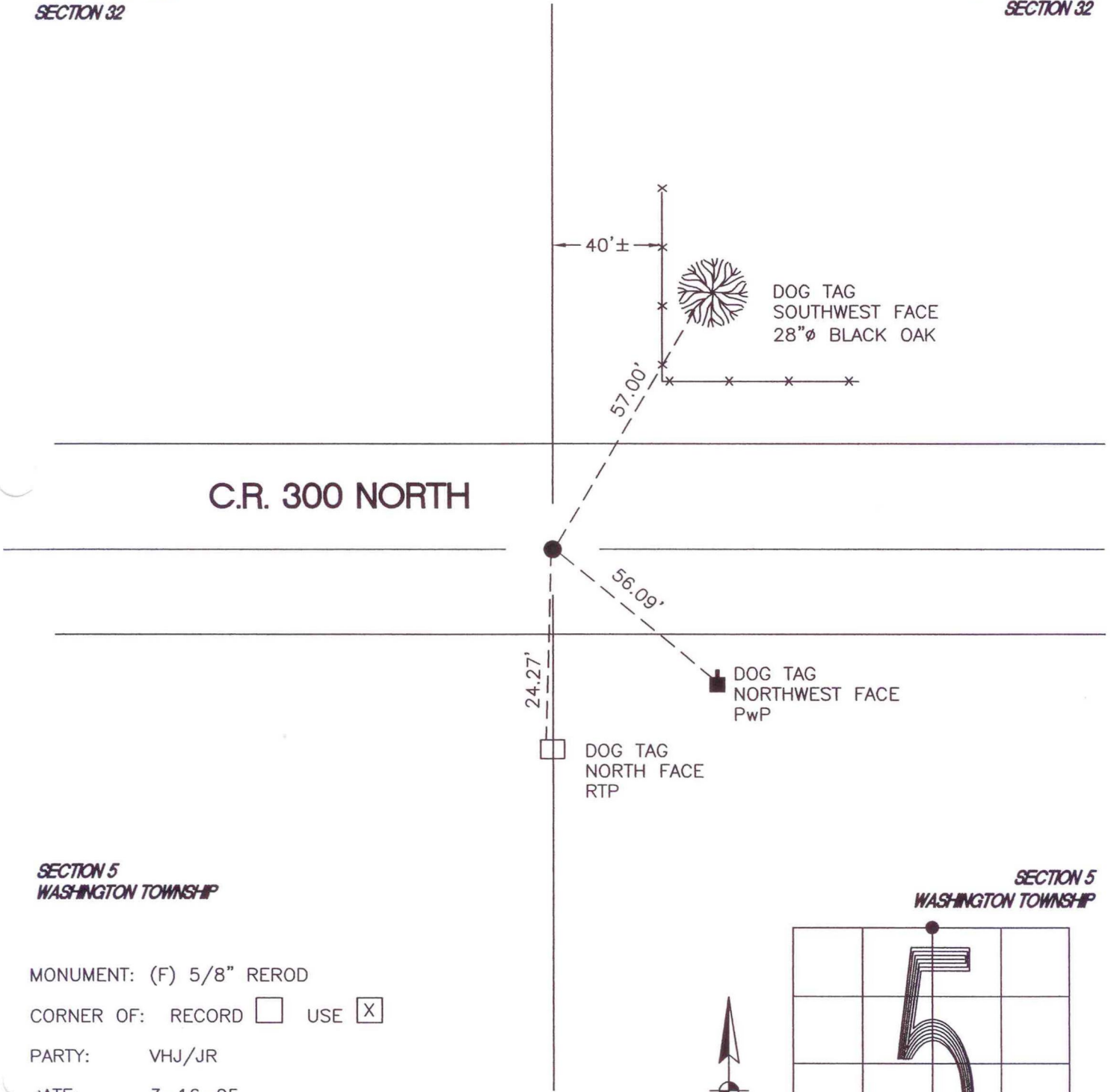


WASHINGTON TOWNSHIP

T 33 N, R 1 W

OREGON TOWNSHIP
SECTION 32

OREGON TOWNSHIP
SECTION 32



C.R. 300 NORTH

DOG TAG
SOUTHWEST FACE
28"Ø BLACK OAK

DOG TAG
NORTHWEST FACE
PwP

DOG TAG
NORTH FACE
RTP

SECTION 5
WASHINGTON TOWNSHIP

SECTION 5
WASHINGTON TOWNSHIP

MONUMENT: (F) 5/8" REROD

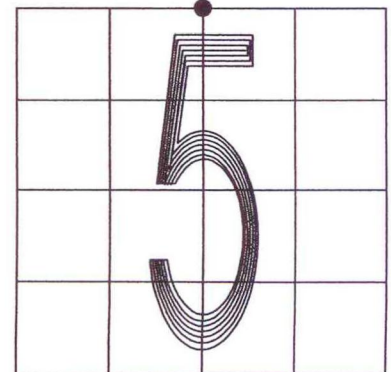
CORNER OF: RECORD USE

PARTY: VHJ/JR

DATE: 3-16-05

COMMENTS:
HISTORY: VHJ OF TERRITORIAL ENGR
FOUND 5/8" REROD ON JANUARY 17, 1986.

INDEX NUMBER



A7

CORNER LOCATION IN THE SECTION