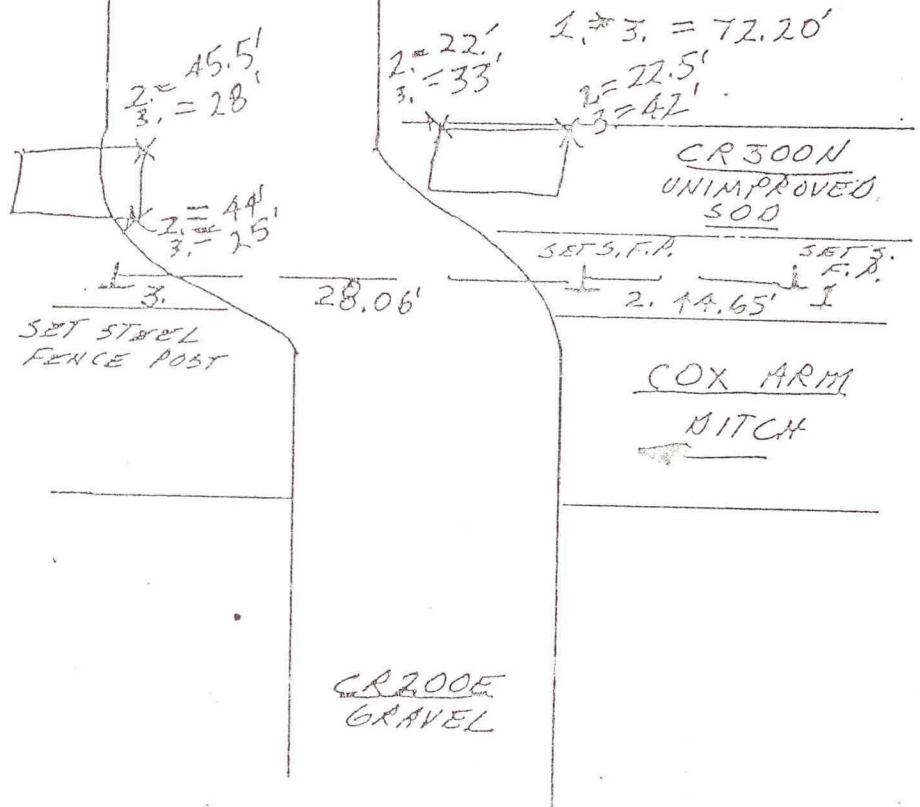


N

SCALE

1. TUES. 19 JUNE '90 OLA RLS 0537 P, MAYER & S. FOUND OLD VEHICLE AXLE @ SUBJECT CLOSING CORNER. STANDARD COR. LIES NEAR OLD TRASH PIT. WILL DIB BOTH. SET 3 STEEL FENCE POSTS BECAUSE LACK OF OTHER DEVICES ON SITE. FOUND AXLE'S REFS =  
1. = 42.22' 2. = 21.95' 3. = 36.20'
2. WEDS. 20 JUNE '90 "AXLE" WAS AN OLD WELL POINT DRIVEN IN THE GROUND AS A CONSIDERED MONUMENT. IT WAS ABOUT 1.5' LONG WITH THE END FLATTENED OUT FROM OBVIOUS HAMMER BLOWS. POINT WAS ABOVE ANY MODERN WATER LEVELS WHICH WOULD MAKE IT USELESS AS A WELL FIXTURE. DUG 3.5' X 12' X 3' DEEP HOLE @ CLOSING CORNER & EAST OF WELL POINT TO E OF CR TO THE SOUTH. DUG SIMILAR HOLE @ STANDARD CORNER FROM RECORD FALLING OF @ WELL POINT & WEST & THEN ON WEST TO APPARENT E TO R/W TO THE NORTH. FOUND NO POSTS, NO PITS, NO STONES. USED E OF CR 300N & WELL POINT FOR N-S ALIGNMENT OF OILS.
3. SUN 15 JULY '90 SPOTTED HOLES



NW. COR. SEC. 4