

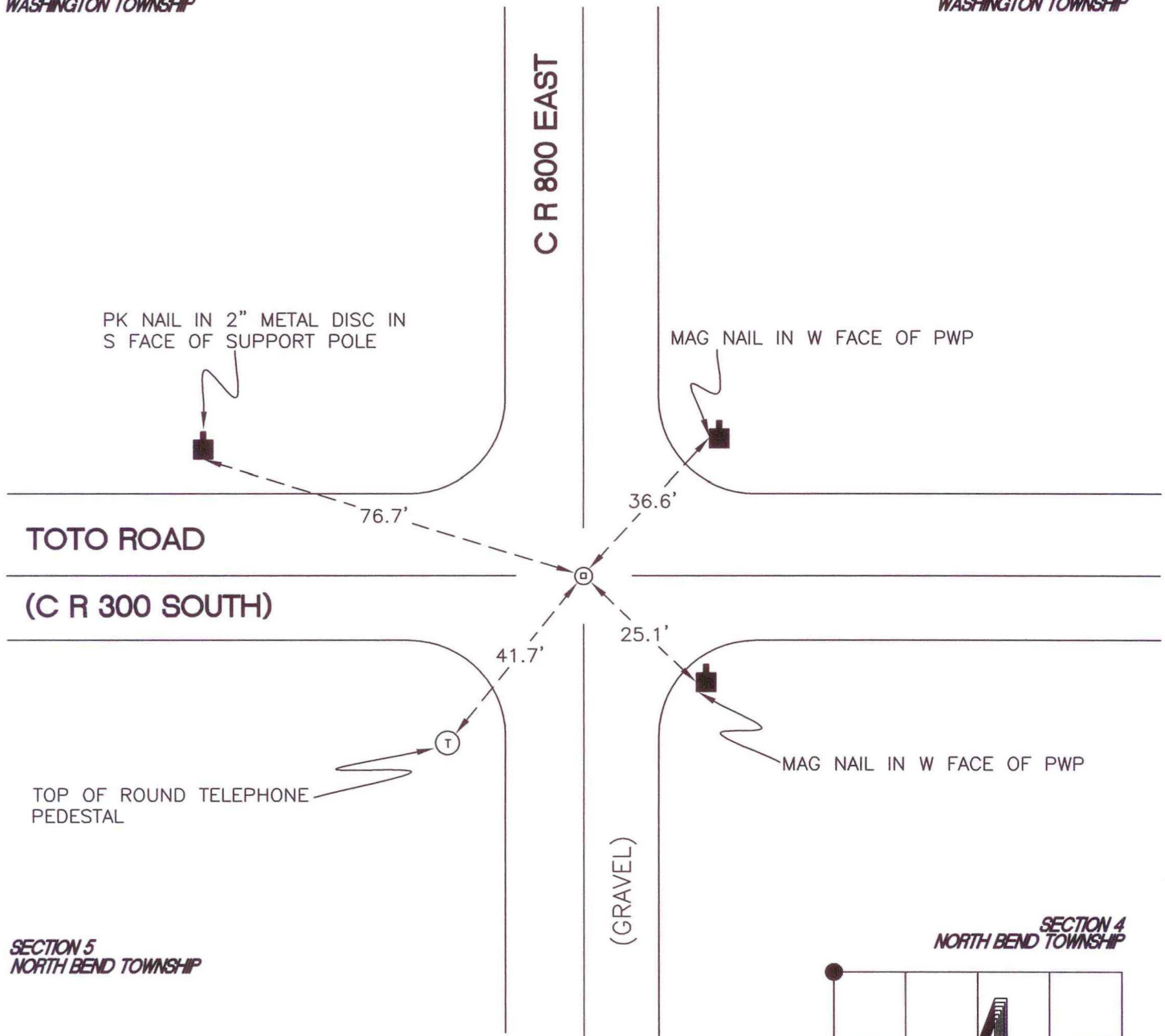
# NORTH BEND TOWNSHIP

T 32 N, R 1 W

## A9

SECTION 32  
WASHINGTON TOWNSHIP

SECTION 33  
WASHINGTON TOWNSHIP



SECTION 5  
NORTH BEND TOWNSHIP

SECTION 4  
NORTH BEND TOWNSHIP

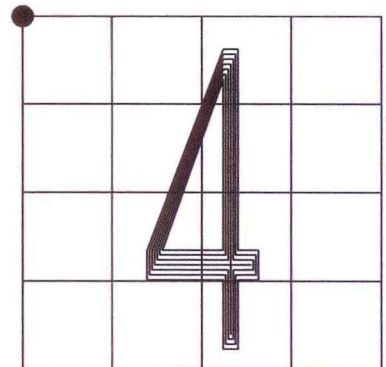
MONUMENT: RR CROSSING BOLT REPLACES RR SPIKE

CORNER OF: RECORD  USE

PARTY: JL/PM

DATE: 7-9-2008

COMMENTS: 1' S OF  $\text{C}$  OF TOTO ROAD  
1834 SURVEY ESTABLISHED THE NW CORNER OF SECTION 4, NORTH BEND TOWNSHIP, 9 LINKS (5.94') W OF THIS MONUMENT. HOWEVER, THIS MONUMENT IS USED AS THE NORTH BEND CORNER.



CORNER LOCATION IN THE SECTION

# A9