

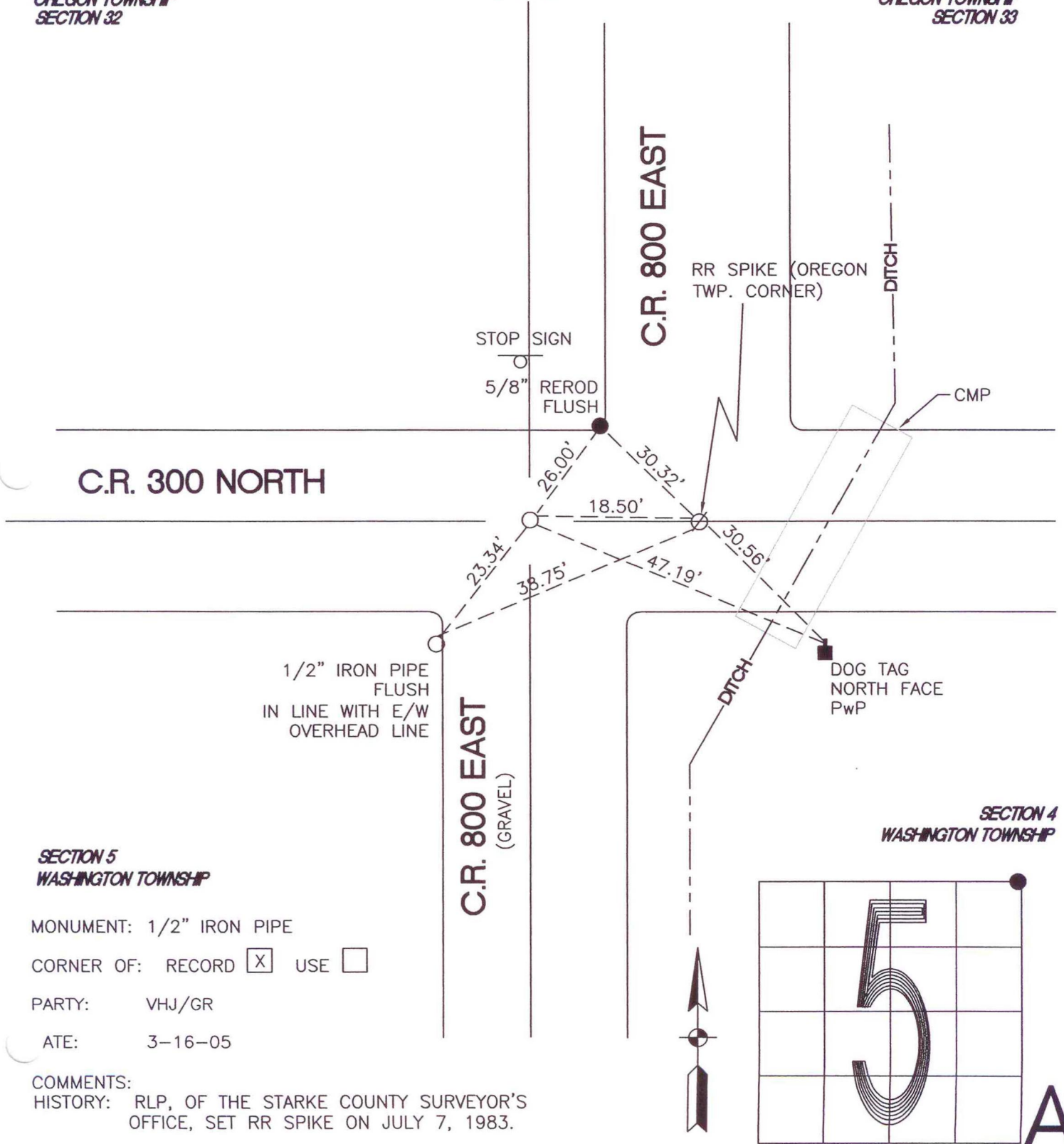
# WASHINGTON TOWNSHIP

T 33 N, R 1 W

## A9

OREGON TOWNSHIP  
SECTION 32

OREGON TOWNSHIP  
SECTION 33



### C.R. 300 NORTH

### C.R. 800 EAST

### C.R. 800 EAST (GRAVEL)

1/2" IRON PIPE  
FLUSH  
IN LINE WITH E/W  
OVERHEAD LINE

STOP SIGN  
5/8" REROD  
FLUSH

RR SPIKE (OREGON  
TWP. CORNER)

DITCH

CMP

DOG TAG  
NORTH FACE  
PwP

SECTION 5  
WASHINGTON TOWNSHIP

MONUMENT: 1/2" IRON PIPE

CORNER OF: RECORD  USE

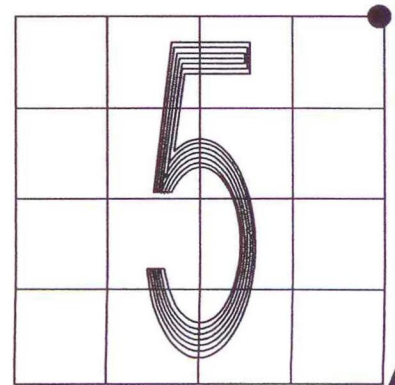
PARTY: VHJ/GR

ATE: 3-16-05

COMMENTS:

HISTORY: RLP, OF THE STARKE COUNTY SURVEYOR'S  
OFFICE, SET RR SPIKE ON JULY 7, 1983.

SECTION 4  
WASHINGTON TOWNSHIP



## A9

CORNER LOCATION IN THE SECTION