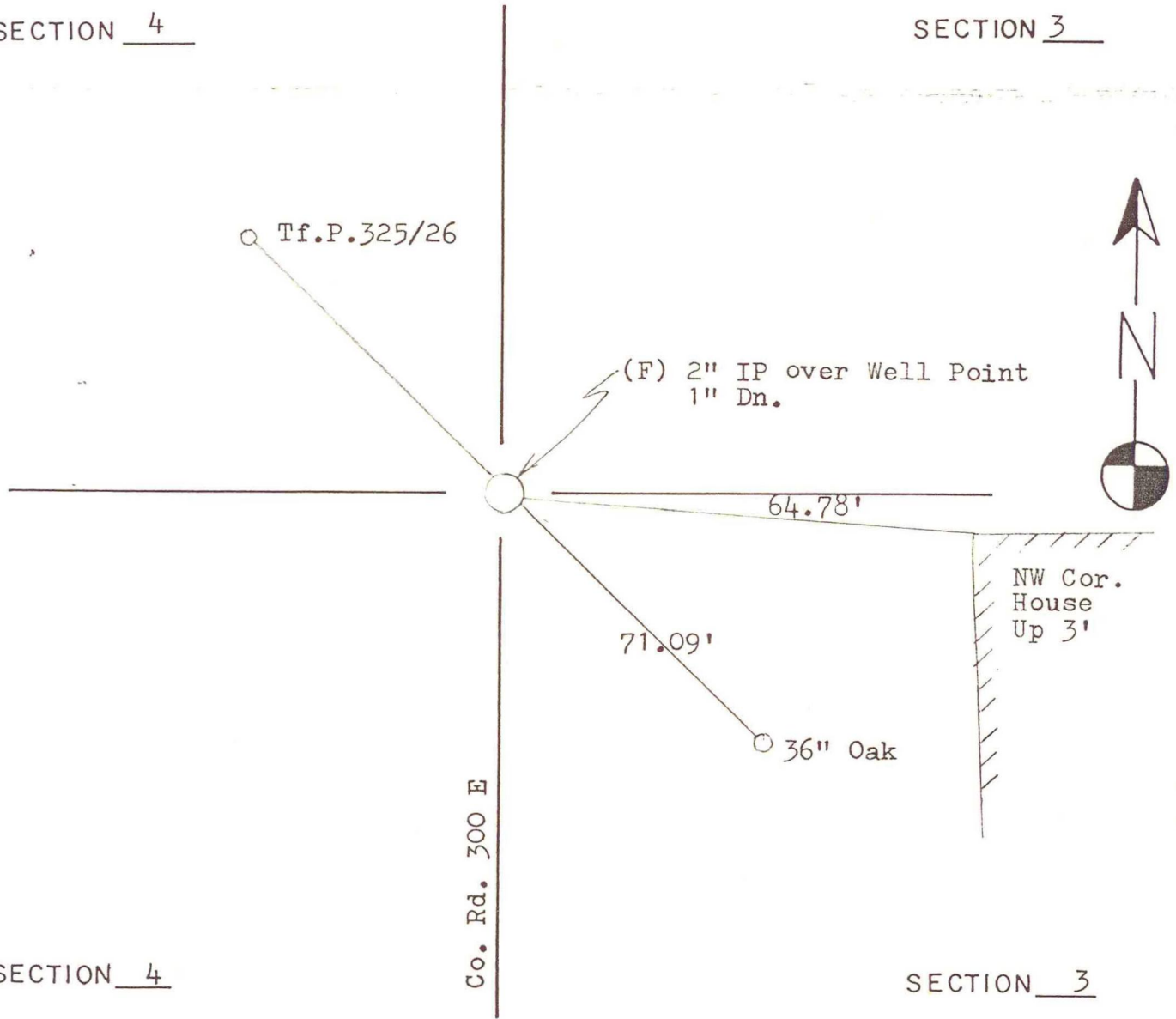


NORTH BEND TOWNSHIP

T 32 N, R 1 W

SECTION 4

SECTION 3



SECTION 4

SECTION 3

DATE	BY	DATE	BY
Jun 1982	ISHD		

CORNER OF: RECORD USE

SOURCE OF INFORMATION:

Indiana State Highway Dept.

B-13