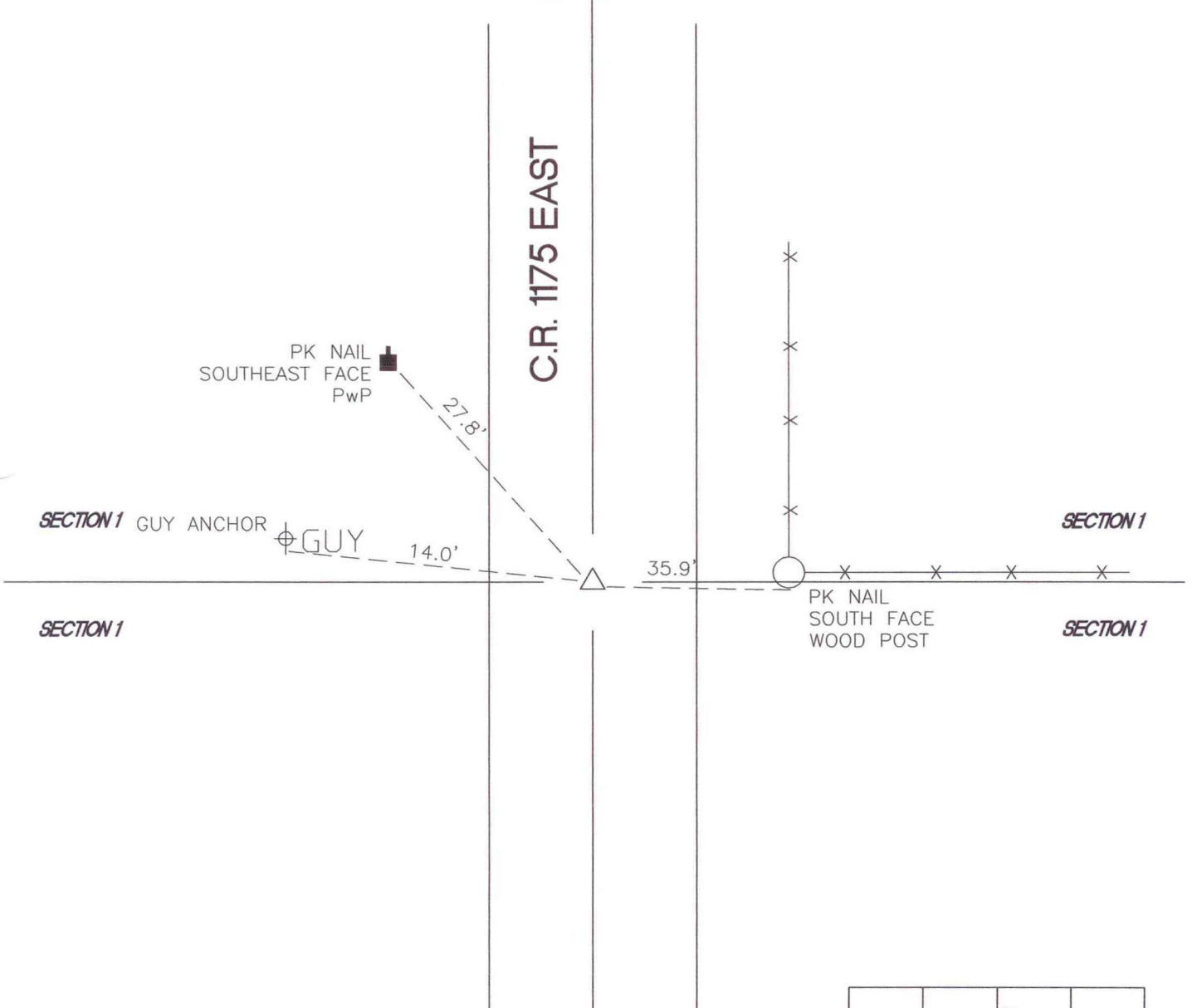


# OREGON TOWNSHIP

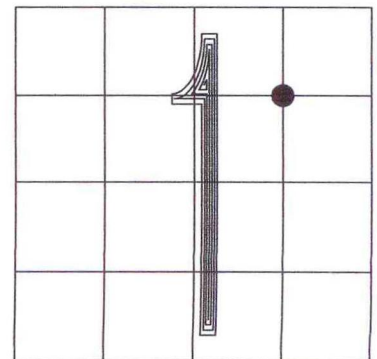
T 34 N, R 1 W

## B24

C.R. 1175 EAST



MONUMENT: (F) 5/8" IRON ROD  
 CORNER OF: RECORD  USE   
 PARTY: VHJ/JR  
 DATE: 3-10-05  
 COMMENTS:



CORNER LOCATION IN THE SECTION