

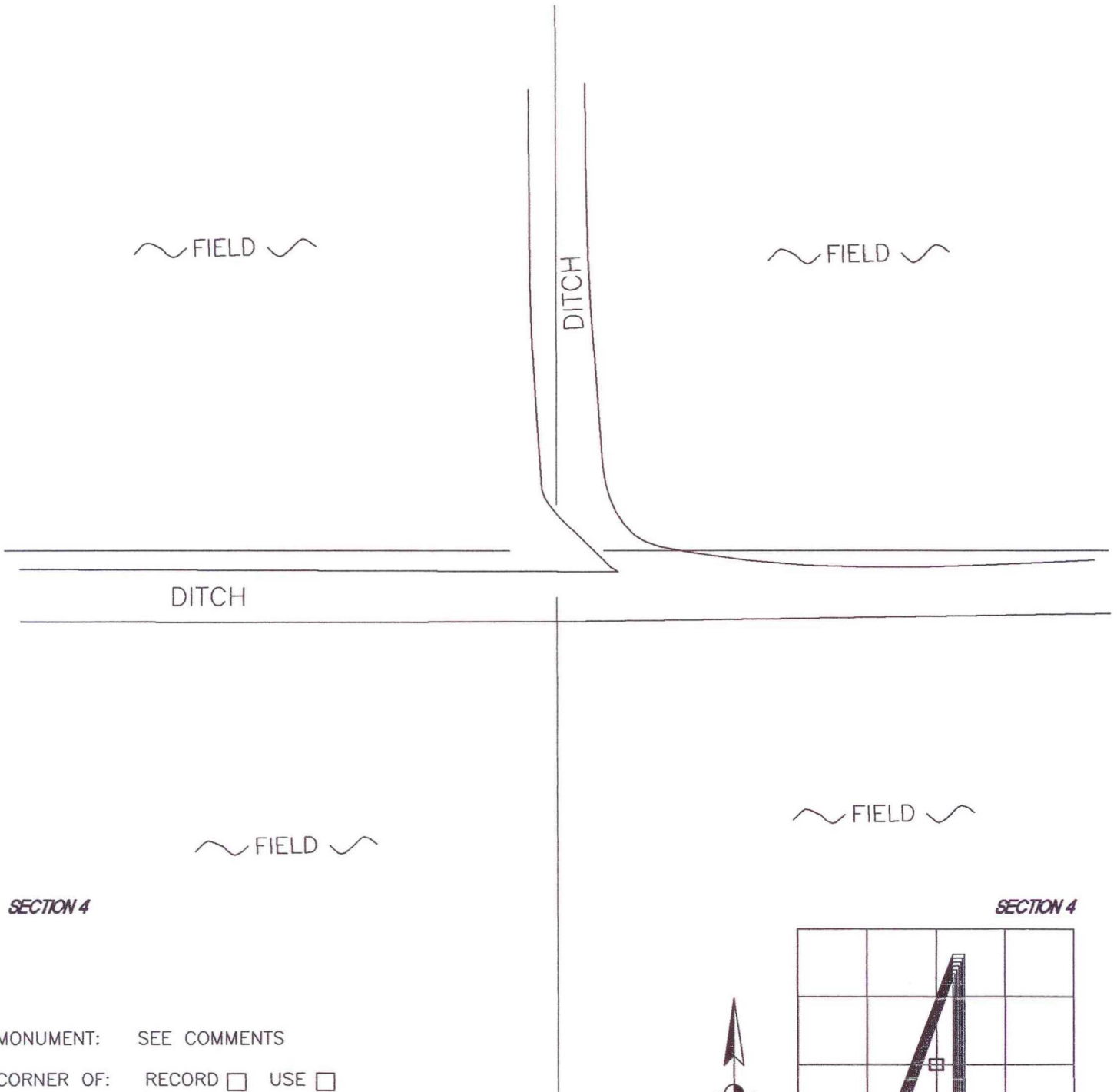
WASHINGTON TOWNSHIP

T 33 N, R 1 W

C11

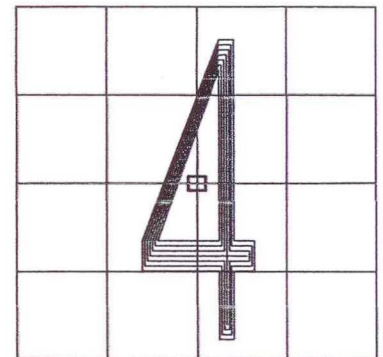
SECTION 4

SECTION 4



MONUMENT: SEE COMMENTS
CORNER OF: RECORD USE
PARTY: DPS/JL
DATE: 2-5-2008

COMMENTS: ESTABLISHED BY COUNTY SURVEYOR IN 1960 AS A STEEL POST WITH NO REFERENCES. FOUND TWO STEEL T POSTS; UNSURE IF EITHER IS THE CORRECT MONUMENT.



CORNER LOCATION IN THE SECTION

C11