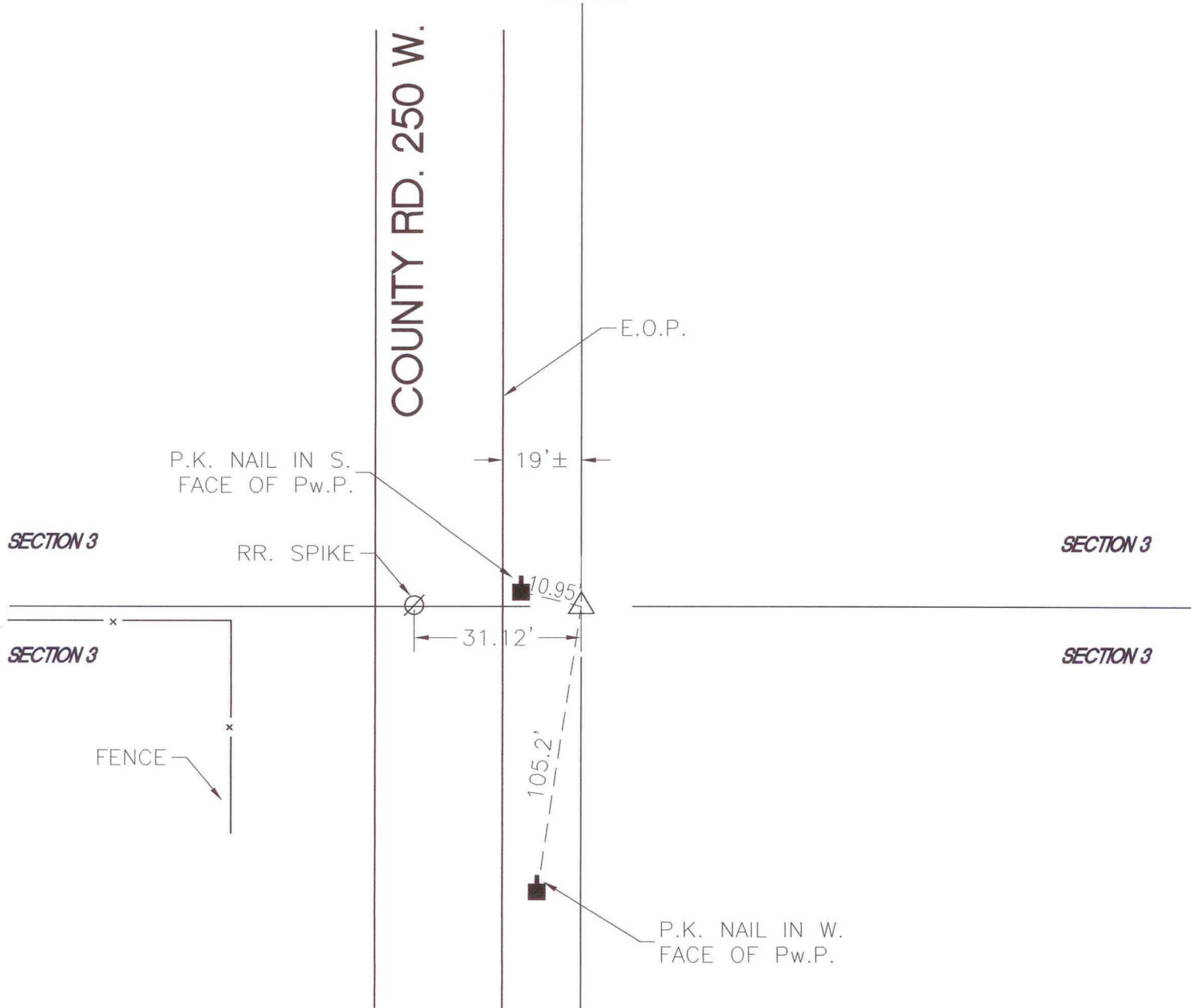


WAYNE TOWNSHIP

T 32 N, R 3 W

C15

COUNTY RD. 250 W.



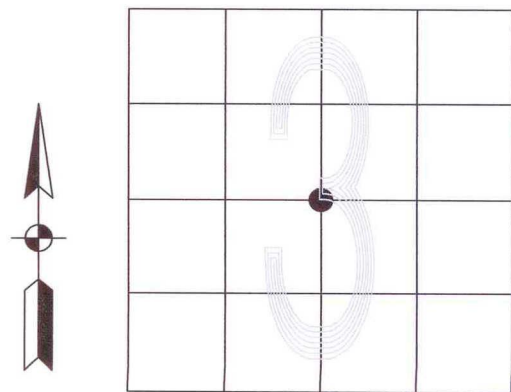
MONUMENT: 5/8" IRON REINFORCING ROD WITH CAP

CORNER OF: RECORD USE

PARTY: VHJ, DWC, BJ

DATE: 3/11/03

COMMENTS: CAP # S0411



CORNER LOCATION IN THE SECTION