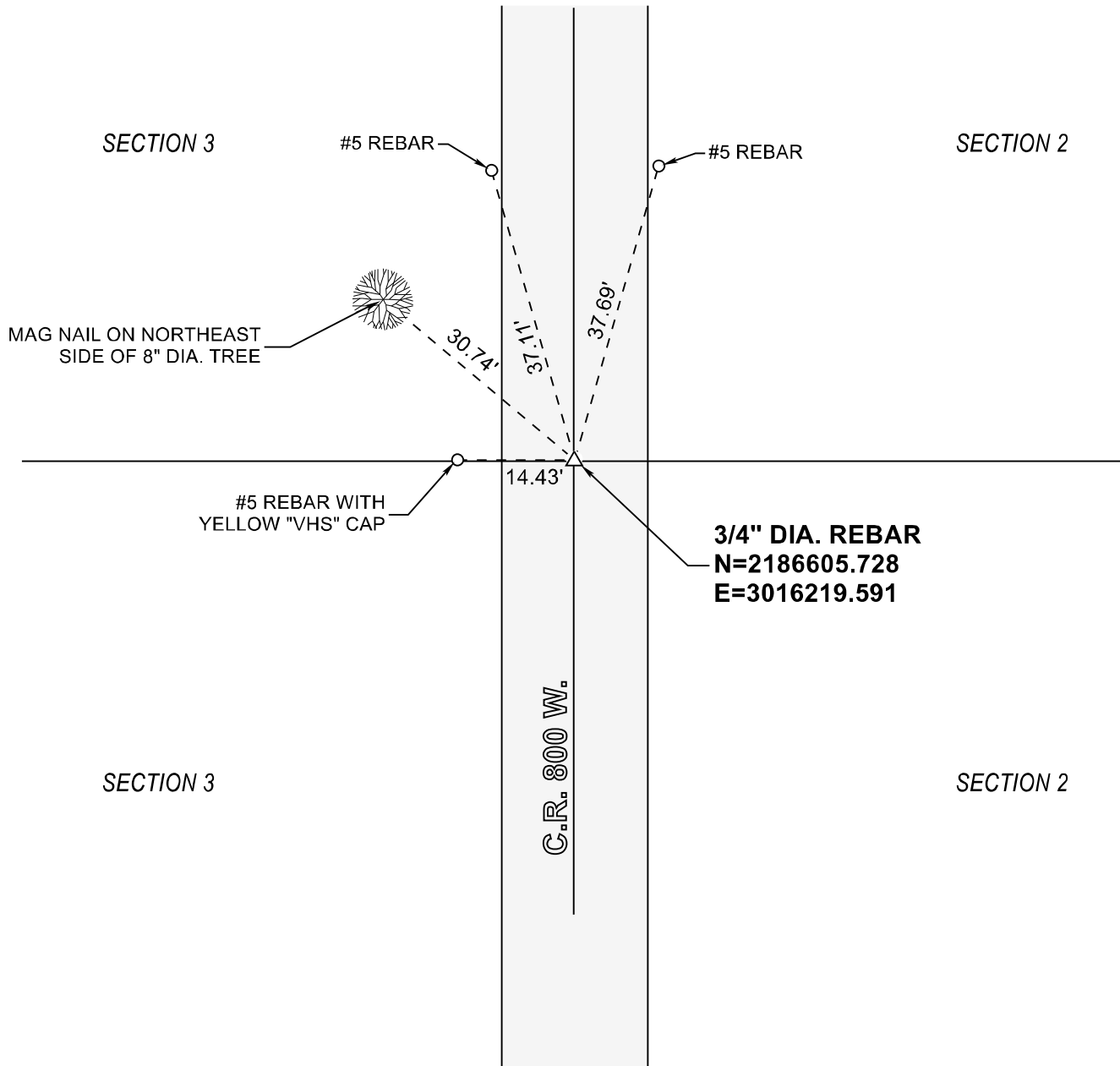


STARKE COUNTY SECTION CORNER RECORD

RAILROAD TOWNSHIP

T 32 N, R 4 W

C17

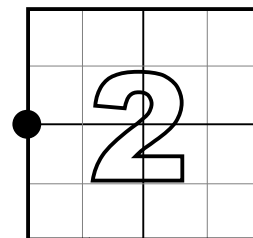


MONUMENT: 3/4" DIA. REBAR

PARTY: SES DATE: 01/02/2020

COMMENTS: FOUND RR SPIKE REFERENCED BY MULTIPLE RECORDED SURVEYS. PULLED AND REPLACED WITH 3/4" X 24" LONG REBAR.

COORDINATE DATUM: INDIANA STATE PLANE WEST NAD83(2011).
Coordinates shown on this sheet are for informational purposes only, and are not to be use in lieu of measurements by a professional surveyor.



CORNER LOCATION
IN SECTION



NOT TO
SCALE