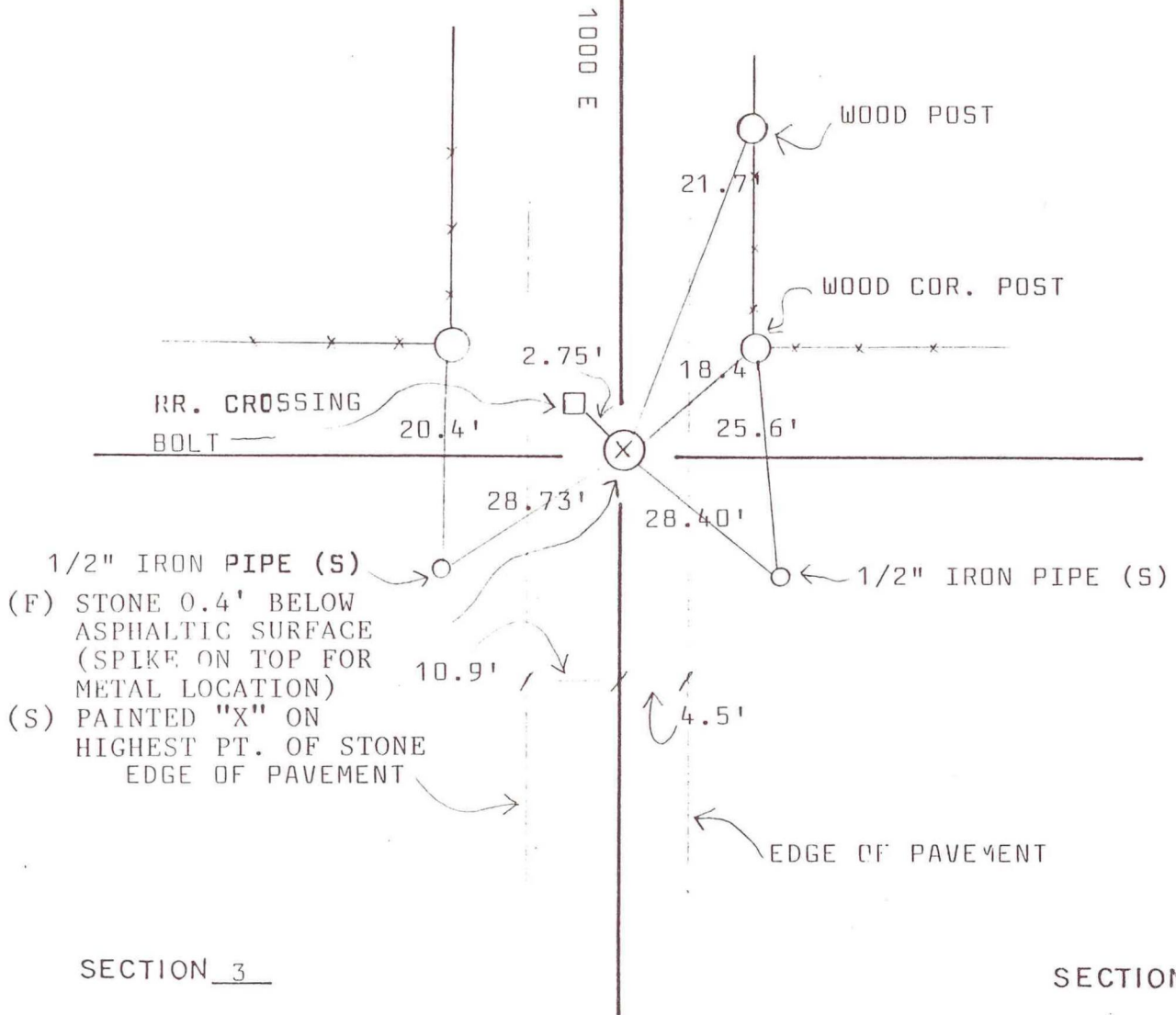


NORTH BEND TOWNSHIP

T 32 N, R 1 W

SECTION 3

SECTION 2



SECTION 3

SECTION 2

DATE	BY	DATE	BY
10-13-89	VHJ/BW		

CORNER OF: RECORD USE

SOURCE OF INFORMATION:

C.E. PAUL 1924, APRIL 2
TERRITORIAL ENGINEERING