

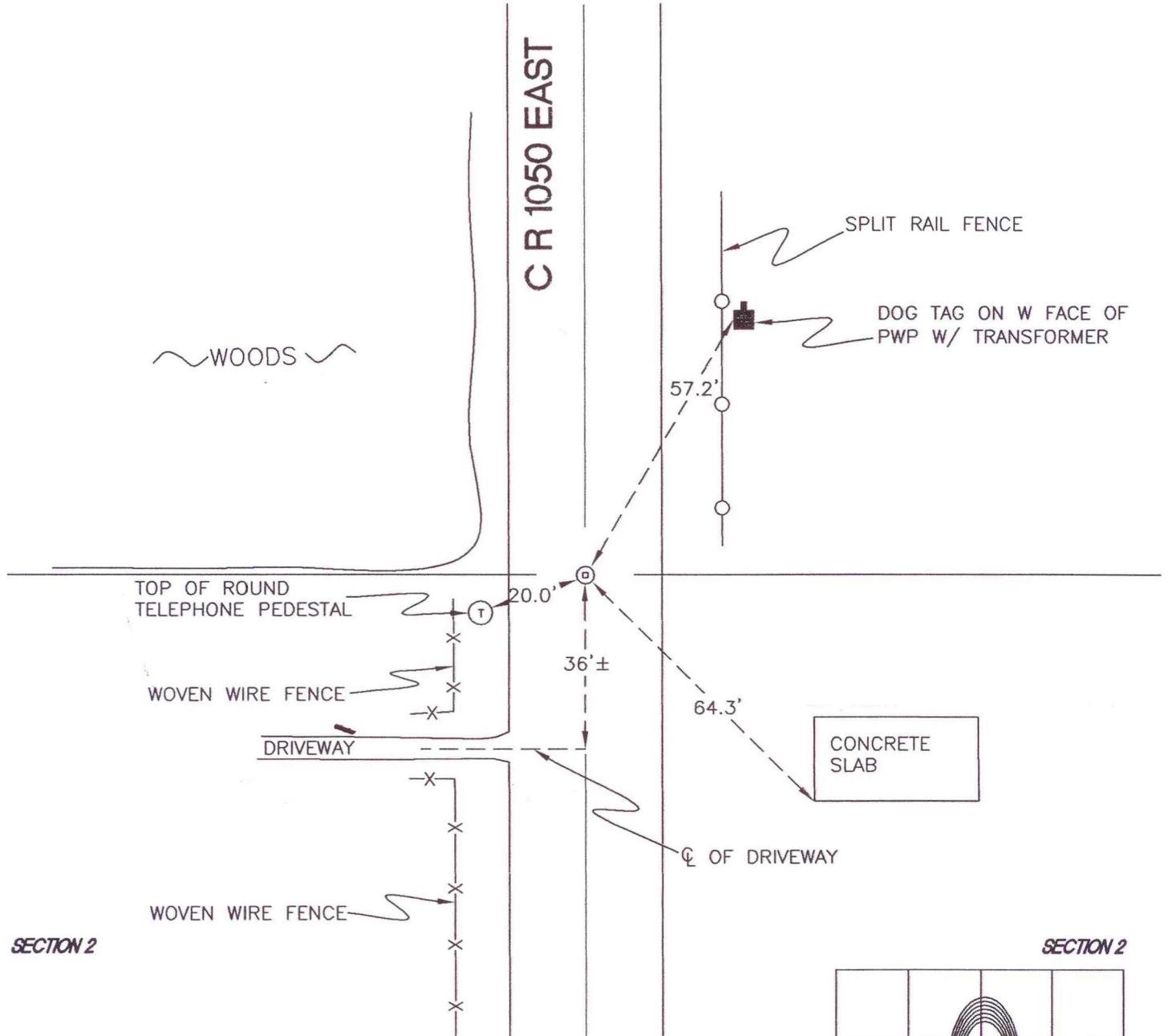
WASHINGTON TOWNSHIP

T 33 N, R 1 W

C18

SECTION 2

SECTION 2



SECTION 2

SECTION 2

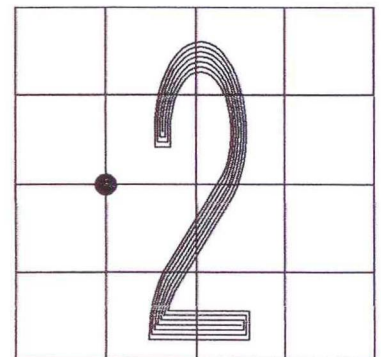
MONUMENT: RAILROAD CROSSING BOLT

CORNER OF: RECORD USE

PARTY: DPS/JL

DATE: 2-5-2008

COMMENTS: REPLACED RR SPIKE FOUND IN 1983 WITH CROSSING BOLT, 2-5-2008.



CORNER LOCATION IN THE SECTION

C18