

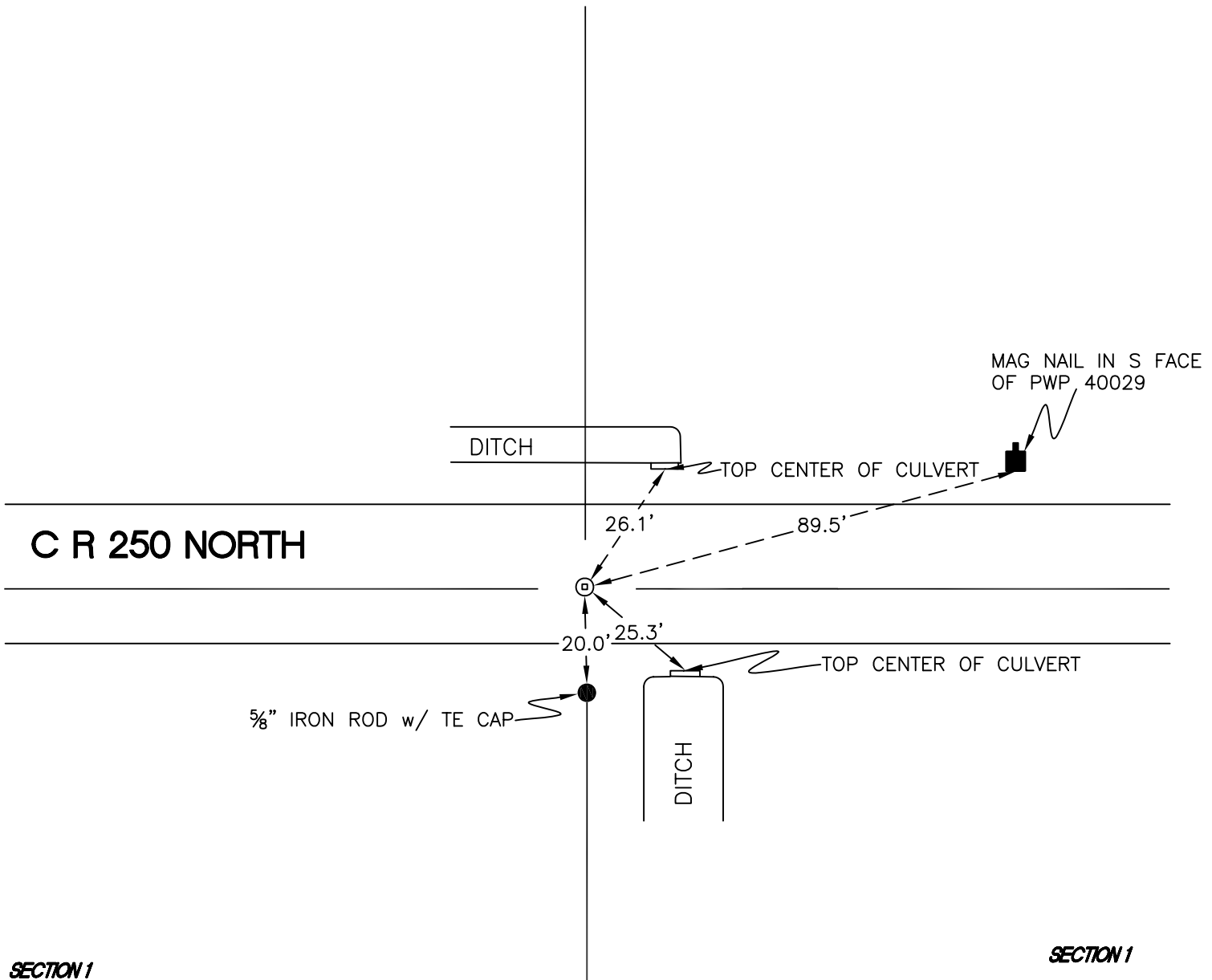
# CENTER TOWNSHIP

T 33 N, R 2 W

## C23

SECTION 1

SECTION 1



SECTION 1

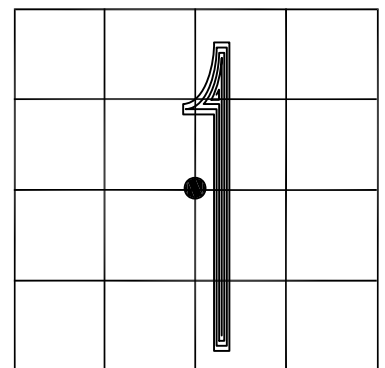
SECTION 1

MONUMENT: RAILROAD CROSSING BOLT

PARTY: MSL/JL

DATE: 11/21/2012

COMMENTS: SET BY TERRITORIAL ENGINEERING;  
DOCUMENT # 2013000239. MONUMENT  
IS 3' S OF  $\phi$  OF 250 N.



CORNER LOCATION IN THE SECTION

# C23