

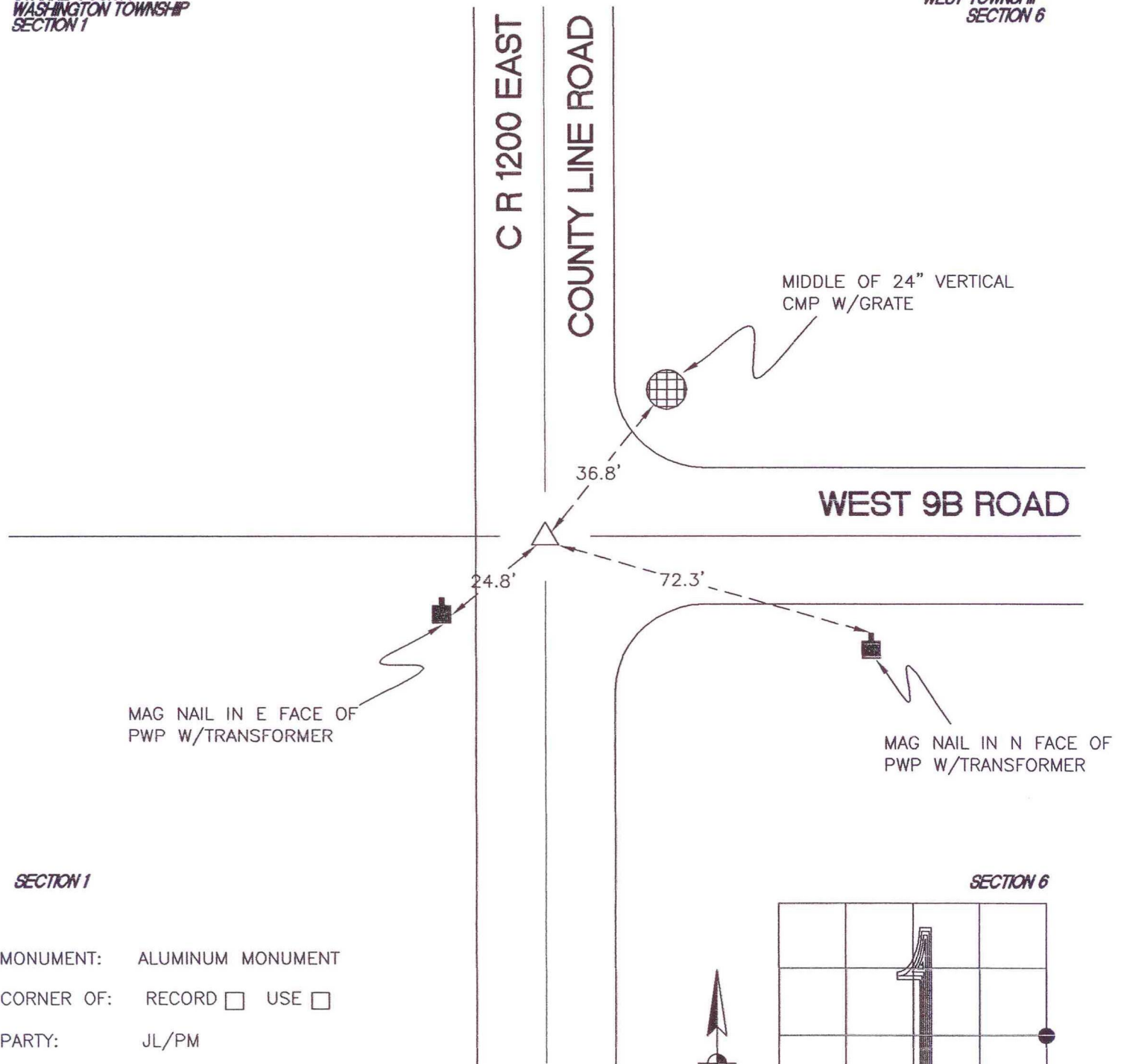
WASHINGTON TOWNSHIP

T 33 N, R 1 W

C25

STARKE COUNTY
WASHINGTON TOWNSHIP
SECTION 1

MARSHALL COUNTY
WEST TOWNSHIP
SECTION 6



SECTION 1

SECTION 6

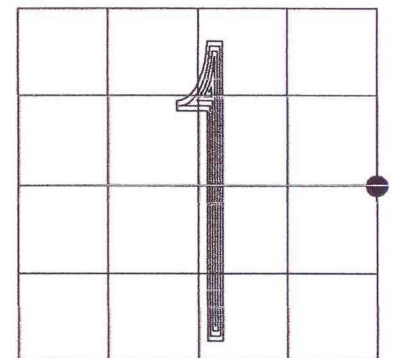
MONUMENT: ALUMINUM MONUMENT

CORNER OF: RECORD USE

PARTY: JL/PM

DATE: 1-23-2008

COMMENTS: 3' W OF \odot OF 1200 E.
IRON MONUMENT AND REFERENCE WITNESSES FOUND IN 1983 NO LONGER EXIST. ALUMINUM MONUMENT ESTABLISHED BY MARSHALL COUNTY IN 2003 WAS HONORED AS THE SE CORNER OF THE NE 1/4 OF SECTION 1 BY TERRITORIAL ENGINEERING IN SURVEY #06-119 RECORDED AS DOCUMENT # 2006002778.



CORNER LOCATION IN THE SECTION

C25