

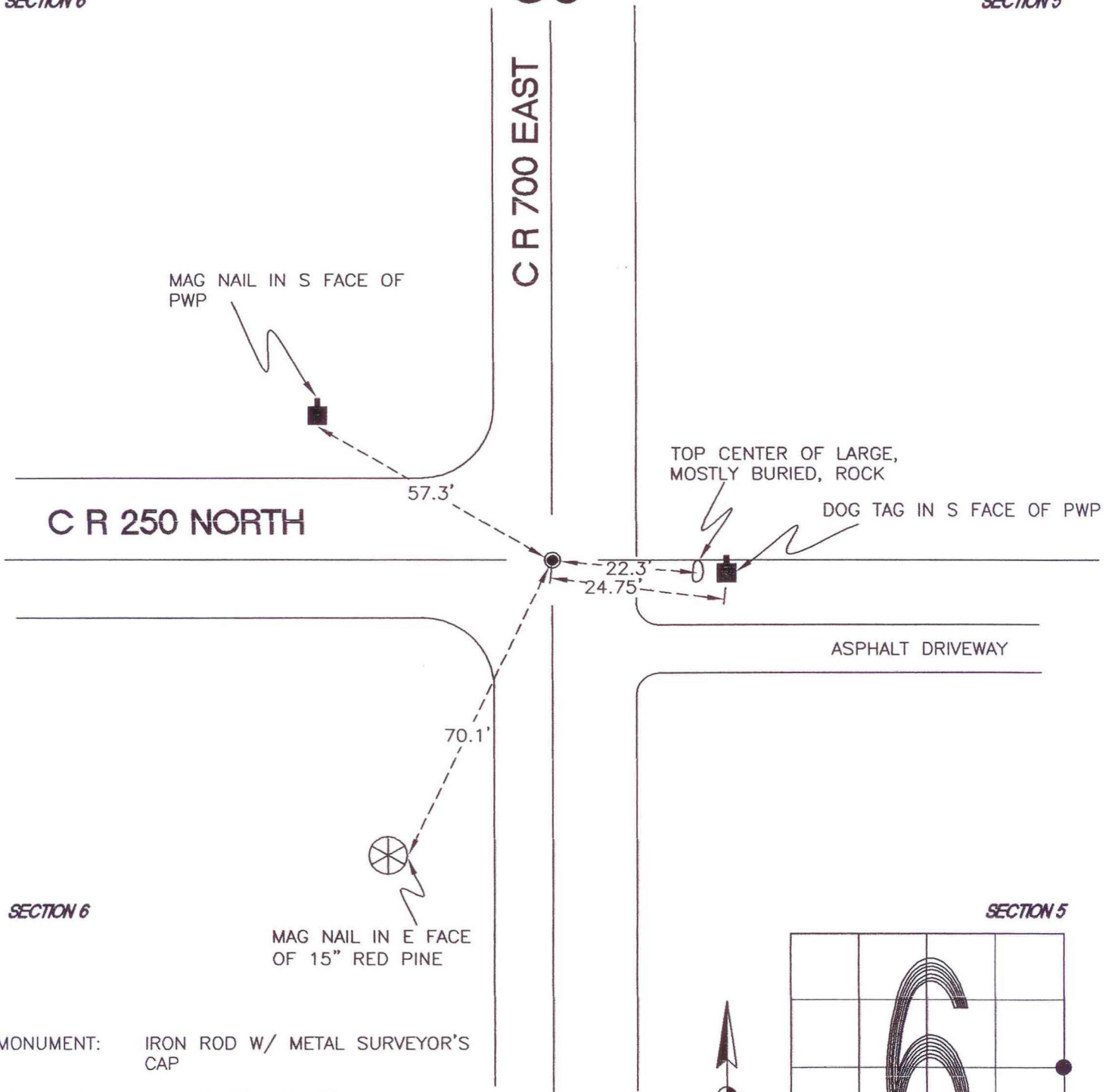
# WASHINGTON TOWNSHIP

T 33 N, R 1 W

## C5

SECTION 6

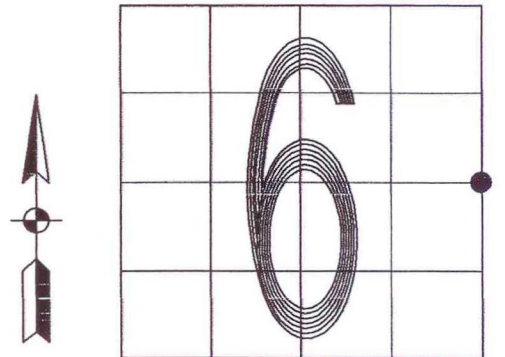
SECTION 5



SECTION 6

SECTION 5

MONUMENT: IRON ROD W/ METAL SURVEYOR'S CAP  
CORNER OF: RECORD  USE   
PARTY: JL  
DATE: 10-8-2007  
COMMENTS: MONUMENT IS 2.5' W OF  $\mathcal{C}$  OF 700 E AND 1.5' S OF  $\mathcal{C}$  OF 250 N; 0.2' BELOW GRADE



CORNER LOCATION IN THE SECTION

## C5