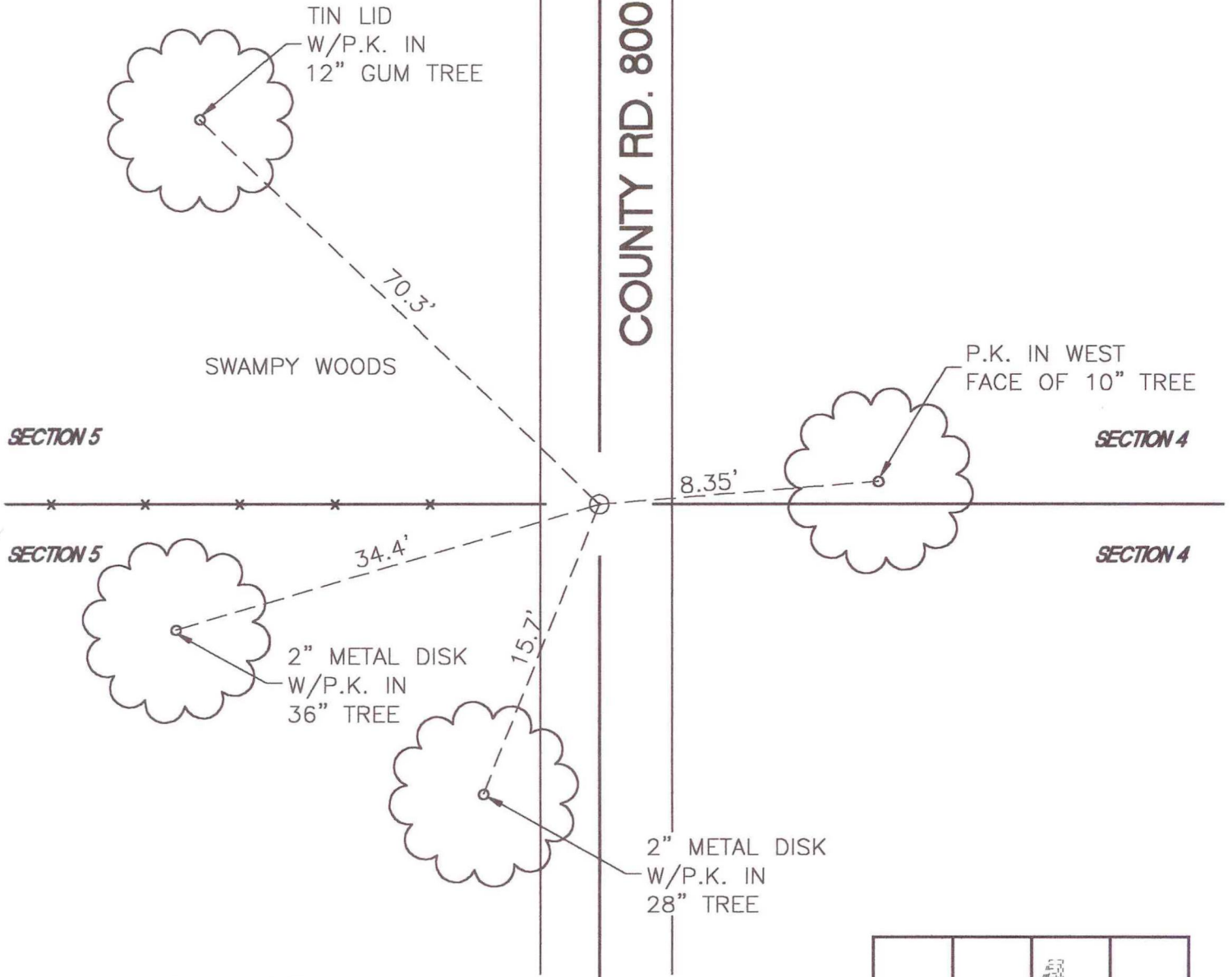


NORTH BEND TOWNSHIP

T 32 N, R 1 W

C9

COUNTY RD. 800 E.



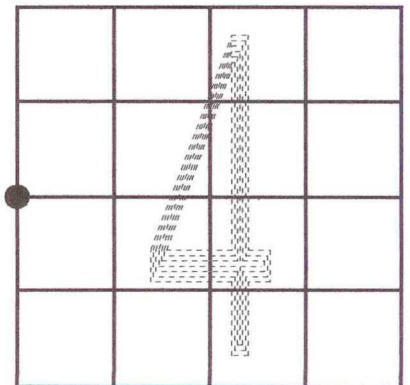
MONUMENT: 7/8" IRON REINFORCING ROD

CORNER OF: RECORD USE

PARTY: DWC / DT

DATE: DECEMBER 1994

COMMENTS: NONE



CORNER LOCATION IN THE SECTION