

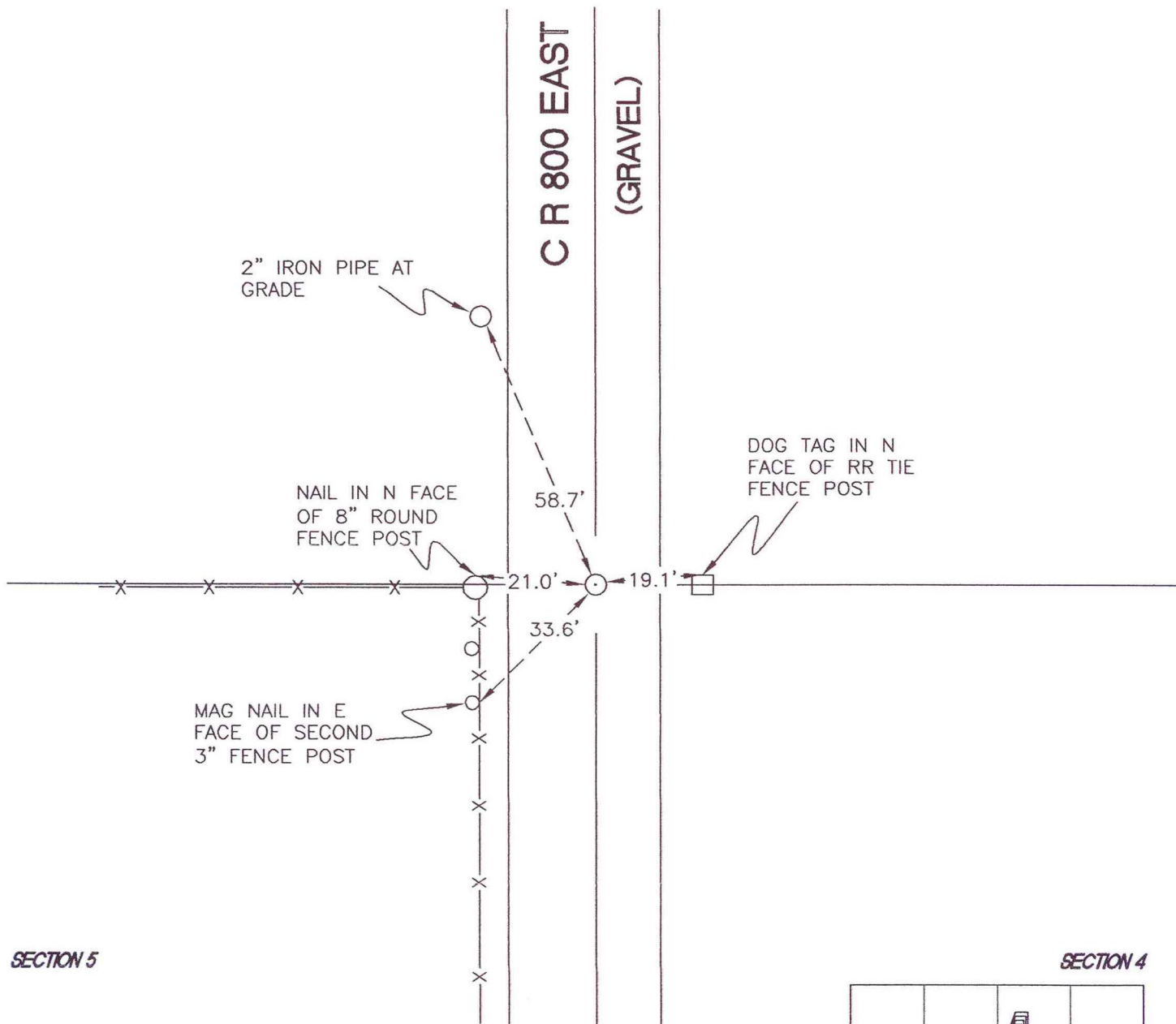
WASHINGTON TOWNSHIP

T 33 N, R 1 W

C9

SECTION 5

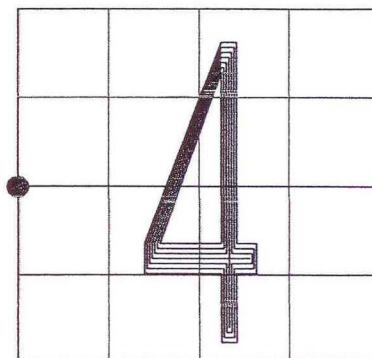
SECTION 4



SECTION 5

SECTION 4

MONUMENT: RAIL BOLT
CORNER OF: RECORD USE
PARTY: JL/PM
DATE: 1-23-2008
COMMENTS: 3" BELOW GRADE; 3 1/2' E OF \odot OF 800E



CORNER LOCATION IN THE SECTION

C9