

WASHINGTON TOWNSHIP

T 33 N, R 1 W

D1

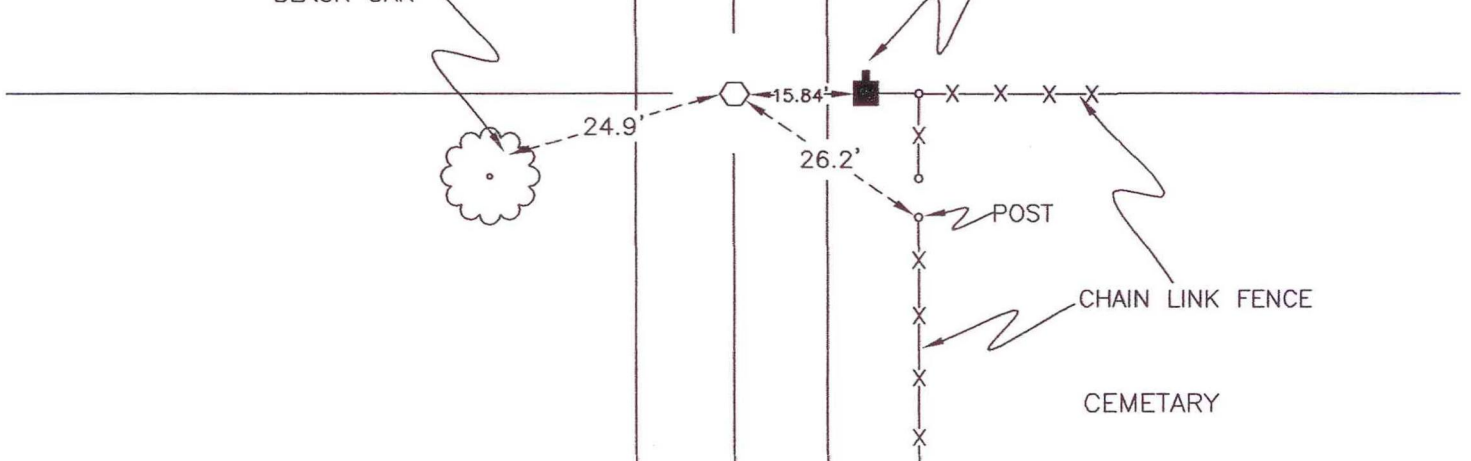
SECTION 1
CENTER TOWNSHIP

SECTION 6
WASHINGTON TOWNSHIP

CR 600 EAST

PK NAIL IN NE FACE OF
BLACK OAK

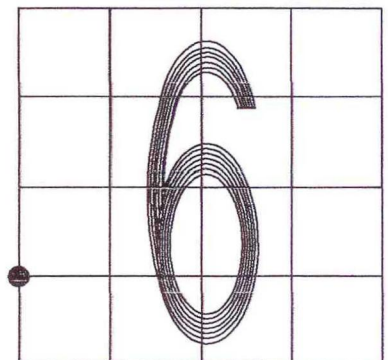
PK NAIL IN W FACE OF
PWP 786/317



SECTION 1
CENTER TOWNSHIP

SECTION 6
WASHINGTON TOWNSHIP

MONUMENT: HEX HEAD BOLT
CORNER OF: RECORD USE
PARTY: JL
DATE: 10-8-2007
COMMENTS: 0.2' BELOW GRADE



CORNER LOCATION IN THE SECTION

D1