

Starke County Highway Department Monthly Report – December 5, 2016

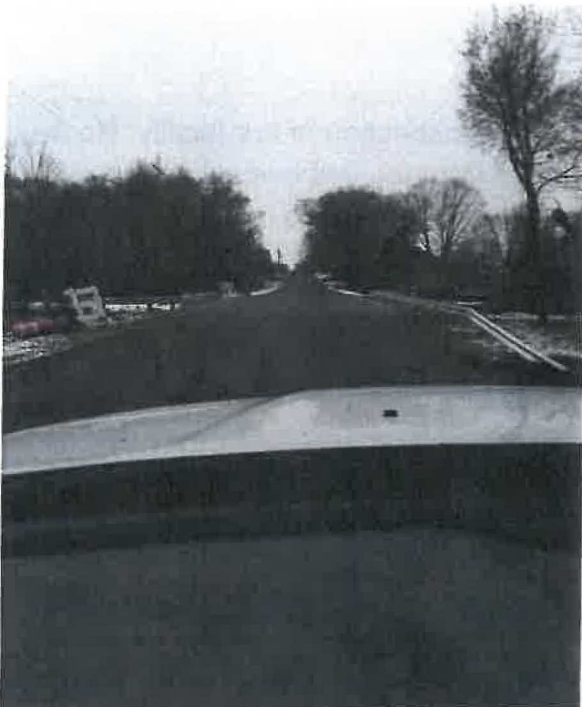
WINTER OPERATIONS

| MONTH | SNOW EVENTS | SNOWFALL IN INCHES | PLOW HOURS | PLOW HOURS PER DRIVER | MILES CLEARED | MILES CLEARED PER HOUR PER DRIVER | SALT USED | SAND USED |
|---------------|-------------|--------------------|------------|-----------------------|---------------|-----------------------------------|-----------|-----------|
| November 2016 | 0 | 0 | 0 | 0 | 0 | 0 | 0 | 0 |
| November 2015 | 3 | 9.13 | 311.5 | 22.9 | 5978 | 19.19 | 150 | 655 |
| November 2014 | 1 | 0.1 | 12 | 3 | 287.7 | 23.98 | 20 | 80 |

Because of the mild November, while we were planning for December last week we decided it would be a good idea to do a “dress rehearsal” plow day where the drivers would put their plows on the trucks and then run through their areas at plowing speed looking for areas that may need plow markers and memorizing where their recently chip roads were. Mother Nature provided some reality for our rehearsal by more snow than expected yesterday. It still looks as though December will be relatively mild. We will continue to stockpile stone for next summer’s road improvements. It looks as though stone prices will increase by about a dollar a ton next year. If we can continue to get “good” weather we may be able to haul in most of what we need next year before January 1st, saving the County some valuable funds.

CURRENT BRIDGE REPLACEMENT PROJECTS

County Bridge #78 (250W, .5 miles S of Toto Rd.) The bridge was opened for traffic this afternoon



County Bridge #50 (CR1150E, .9 miles SR10.) This bridge was awarded to Norther Indiana Construction in September. The selected bid was \$270,531.00. This was almost \$46,000 less than the engineer’s estimate.

County Bridge #46 (CR900E, .8 miles SR10) The design for this bridge is complete. The bid opening was held on November 21st. Northern Indiana Construction was awarded the contract with a bid of \$263,945.13. Construction will begin in April of 2017

County Bridge #47 (CR625S, just west of 875E) The design for this bridge is complete. The bid opening was held on November 21st. Northern Indiana Construction was awarded the contract with a bid of \$274,747.13. Construction will begin in April of 2017

County Bridge #7 (1200E, 1.1 miles S of SR8) Starke County was awarded \$1,080,000.00 in matching funds for this bridge replacement in 2019. The RFP for design has been advertised by INDOT. The due date for proposals for the design of the bridge is January 16, 2017. All submitted proposals will be scored by both INDOT and Starke County. The contract will be awarded after that scoring is complete.

STARKE COUNTY HIGHWAY HISTORY – We contacted Work One last week and we they may be able to provide us with a worker to help complete the organization of our historical records.

ROAD INVENTORY CHANGES

- 1) Delete East Maple St. at Bass Lake (some residents of Maple St. may be opposed to this change)
- 2) Delete 200E, north of 50S (we may want to keep this section)
- 3) Delete Division Road, west of 200E
- 4) Add Woodlawn Road at Koontz Lake
- 5) Delete 700N, west of 50E

We are still attempting to contact all of the residents affected by these proposed changes. So far it appears as though we may recommend #3,4, and 5 as stated and recommend 1 and 2 be removed from this list.

SAFETY

Last week an inspector for Bitco insurance performed a safety inspection of our facility. He was checking to make sure we had made the necessary changes from the last inspection (safety stickers on a few trucks and a burned out bulb on our loader). He also did a surprise inspection of some of our trucks, looking for equipment, cleanliness, and making sure the drivers wore their seat belts and exited their trucks properly. The trucks and the drivers passed in each instance. He also checked our chainsaws and our bucket truck procedures. Both received his approval. The only mark against us was that our eye wash station was cracked beyond repair and leaking water. To remedy the situation, we have ordered a new eye wash station.

TRAINING

Last week the Superintendent and three of our drivers attended a road scholar course at the IACC conference. Here is the status of our employees Road Scholar training:

| | #1 Asset Management | #2 Liability and Risk | #3 Highway Funding | #4 Purchasing/Public Administration | #5 Roadway Safety | #6 Basics of a Good Road | #7 Temporary Traffic Control | #8 MUTCD | #9 Bridge Basics | #10 Drainage | #11 Road and Bridge Maintenance | #12 Estimating Construction Costs | Total Points |
|--------------------|---------------------|-----------------------|--------------------|-------------------------------------|-------------------|--------------------------|------------------------------|----------|------------------|--------------|---------------------------------|-----------------------------------|--------------|
| Rik Ritzler | X | X | X | X | X | X | X | X | X | X | X | X | 562 |
| Dale Conley | X | X | X | X | X | X | X | | X | X | | | 389 |
| Louis Sommerfield | | | | | | | x | x | x | x | | | 342 |
| Ralph Saine | | | x | | | x | x | x | | x | | x | 331 |
| Ricky Fisher | | | | | | x | x | | | | | | 329 |
| Terry McIntire | | | | | | | x | x | | | | | 325 |
| Bryon Fort | | | | | | | | | | | | | 323 |
| Bob Lorenz | X | X | | | | | X | X | X | | | | 321 |
| Tony Dowd | | | | | | | | | | | | | 316 |
| Andy Cornwall | | | | | | x | x | x | x | x | | x | 311 |
| Cary Jensen | | | | | | | | | | | | | 300 |
| Mike Atkins | | | | | | | X | | | | | | 184 |
| Larry Ludwig | | | | | | x | x | x | | x | | x | 173 |
| Francis Tibbs | | | | | | x | x | x | | x | | | 161 |
| George Pranger | | | | | | | x | x | | | | | 147 |
| Terry McDaniel | | | | | | | x | x | | | | | 136 |
| Rachel Oesterreich | X | X | X | X | X | | X | | X | X | | | 133 |
| Clinton Collins | | | | | | | X | X | | X | | | 113 |
| Bill Sample | | | | | | | | | | | | | 109 |
| Brendon Bailey | | | | | | | | | | | | | 60 |
| Nevin Miller | | | | | | | | | | | | | 60 |
| Keith Clapp | | | | | | | | | | | | | 30 |
| Adam Fort | | | | | | | | | | | | | 30 |
| Melvin Fisher Jr. | | | | | | | | | | | | | 0 |
| Joe Robbins | | | | | | | | | | | | | 0 |
| Don Coffin Jr. | | | | | | | | | | | | | |

Road Builder Status at 300 points (all 12 classes are required)

Master Road Builder status at 600 points (all 12 classes required)

Points awarded for each year of roadway work (maximum of 300/ten years)

Two of our employees also passed one of the INDOT construction Inspector exams last month. We are hoping we can get one more employee to pass all six exams and be certified for Construction Inspection.

| | #1 Bridge Construction and Deck Repair | #2 Concrete Paving | #3 Construction Earthworks | #4 Hot Mix Asphalt | #5 Construction Procedures I | #6 Construction Procedures II | Certification Dates |
|--------------------|--|--------------------|----------------------------|--------------------|------------------------------|-------------------------------|--|
| Rik Ritzler | X | X | X | X | X | X | Certified - August 2010, Recertified July 2015 |
| Rachel Oesterreich | X | X | X | X | X | x | Certified January 2016 |
| Bob Lorenz | X | X | | X | | | Certified 1998 Recertification in process |
| Andy Cornwall | X | | X | | | | |
| Nevin Miller | X | | | | | | |
| Matt Barcus* | X | | | | | | |

The Superintendent also attended asset management lectures at the conference and learned about more requirements that the State may have for future road and bridge funding. They stressed the need for an asset management plan that includes the following asset categories:

- 1) Road
- 2) Bridge
- 3) Culverts
- 4) Signs
- 5) Vehicles
- 6) Heavy Equipment
- 7) Other equipment and parts (inventory of these was stressed)
- 8) Personnel

We have a plan in place that includes these assets. We will outline the plan during our January report and include our goals for 2017 and beyond in these categories.