

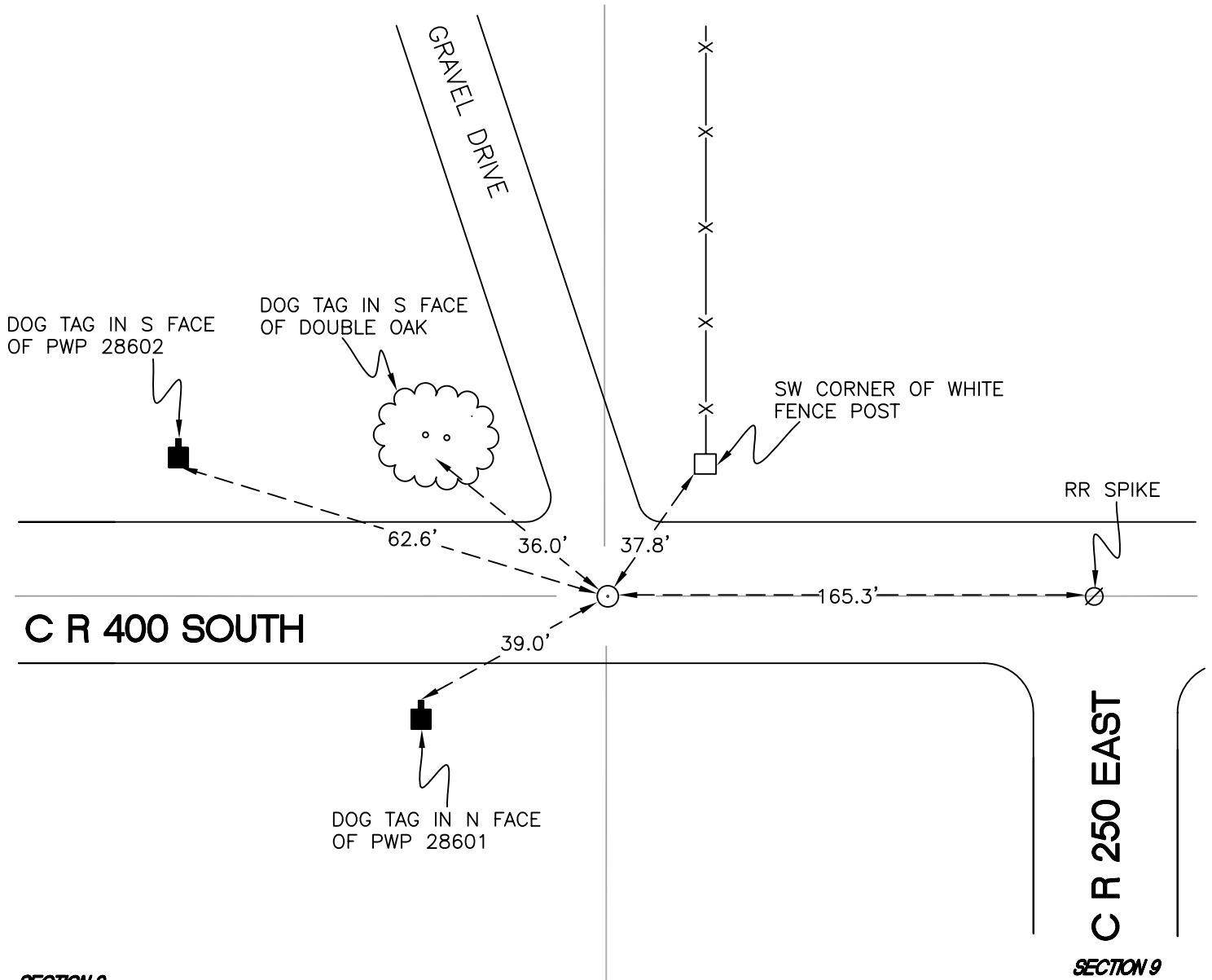
CALIFORNIA TOWNSHIP

T 32 N, R 2 W

E11

SECTION 4

SECTION 4

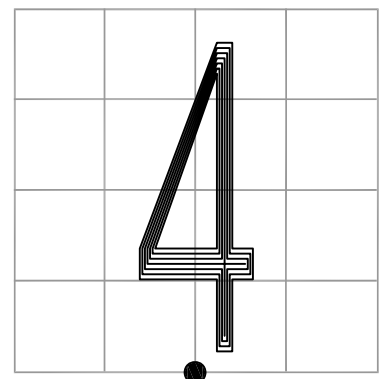


MONUMENT: RAIL BOLT OVER STONE w/ "+"

PARTY: JL/AO

DATE: 7/25/12

COMMENTS: STONE IS 12" BELOW GRADE; 1" IRON ROD IS 0.3' E OF MONUMENT. FOUND BY JBS IN 1963, SJF IN 1986, AND DWC/MJ IN 1989.



CORNER LOCATION IN THE SECTION

E11