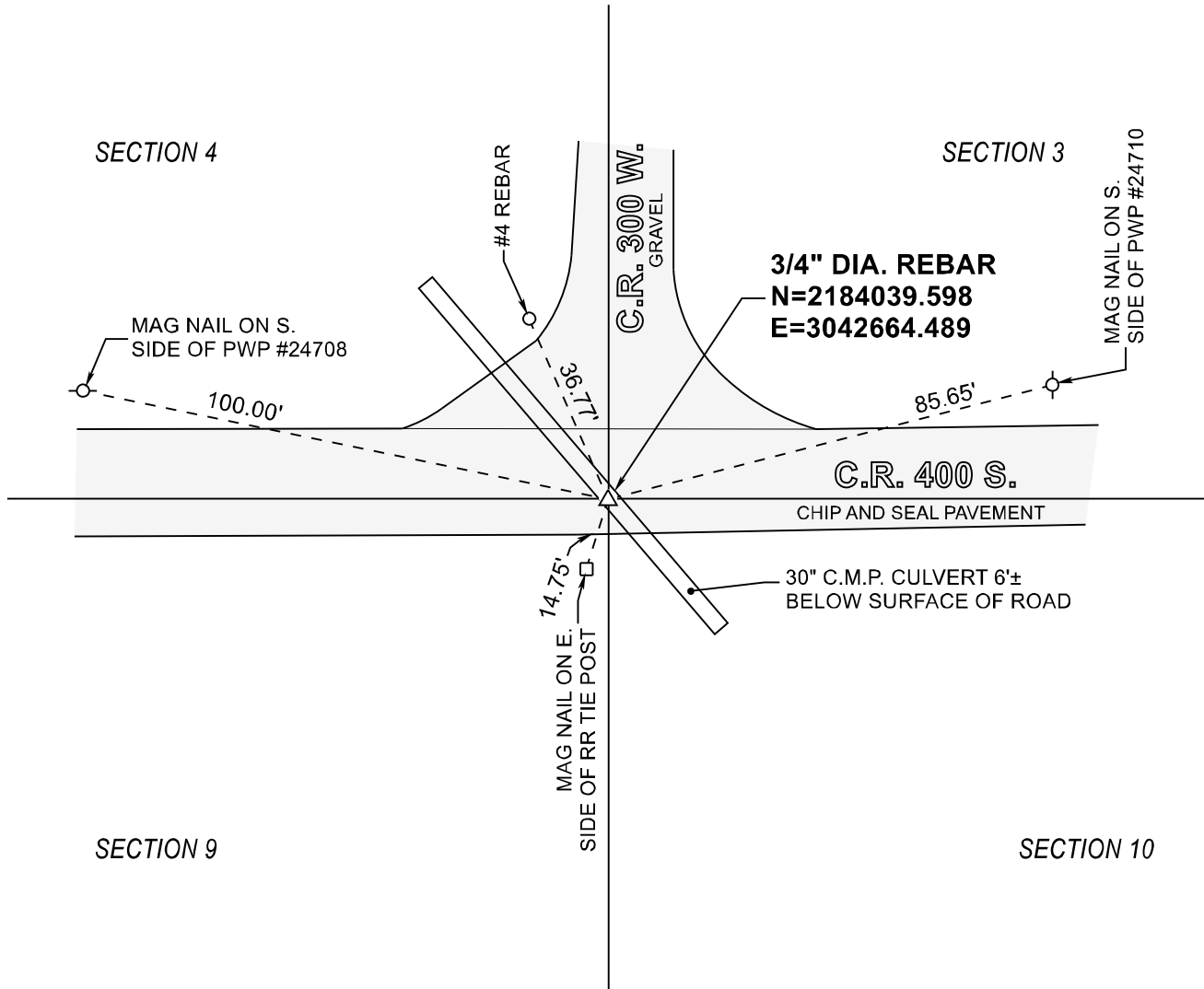


STARKE COUNTY SECTION CORNER RECORD

WAYNE TOWNSHIP

T 32 N, R 3 W

E13



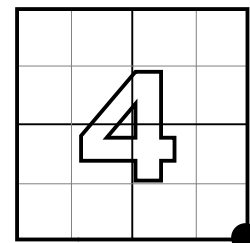
MONUMENT: 3/4" DIAMETER REBAR

PARTY: SES DATE: 06/26/2020

COMMENTS: Previous monument obliterated by culvert construction. Set new monument (3/4" rebar) at intersection of 3 remaining witnesses.

RR spike found by VHJ, DWC & BJ on 03/11/03

COORDINATE DATUM: INDIANA STATE PLANE WEST NAD83(2011).
Coordinates shown on this sheet are for informational purposes only, and are not to be use in lieu of measurements by a professional surveyor.



CORNER LOCATION
IN SECTION



NOT TO
SCALE