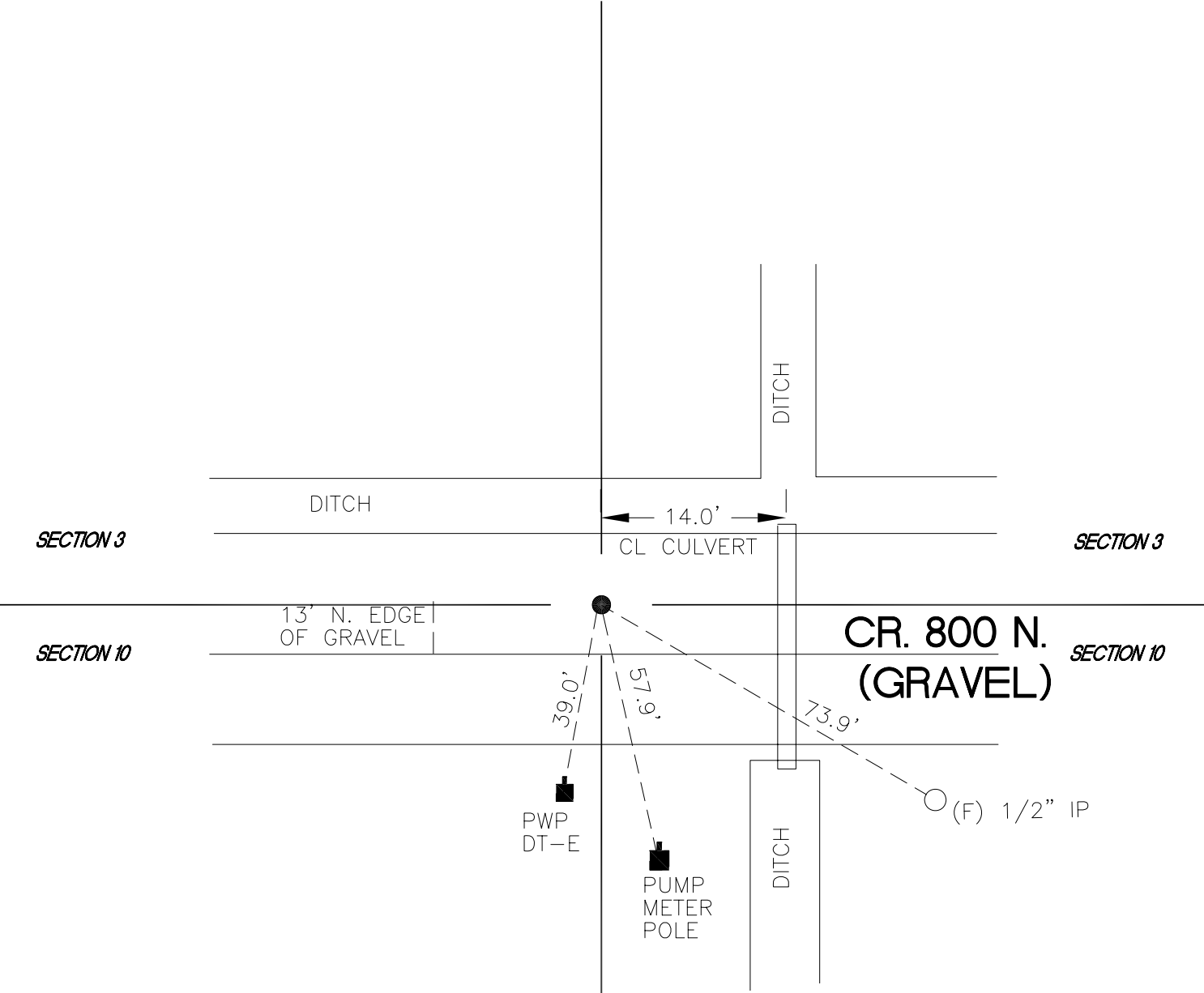


DAVIS TOWNSHIP

T 34 N, R 2 W

E15



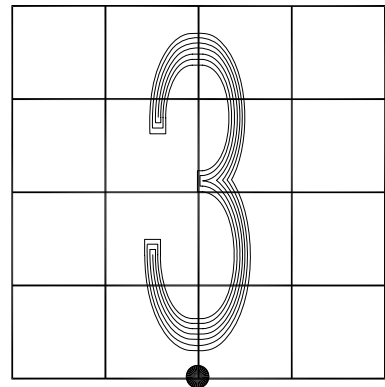
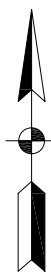
MONUMENT: (S) 5/8" IRON ROD 30" LONG

CORNER OF: RECORD USE

PARTY: DPS/AJR

DATE: AUGUST 2017

COMMENTS: (F) 1/2" IP (BENT) 4' LONG
REPLACED WITH 5/8" IR 30" LONG



CORNER LOCATION IN THE SECTION