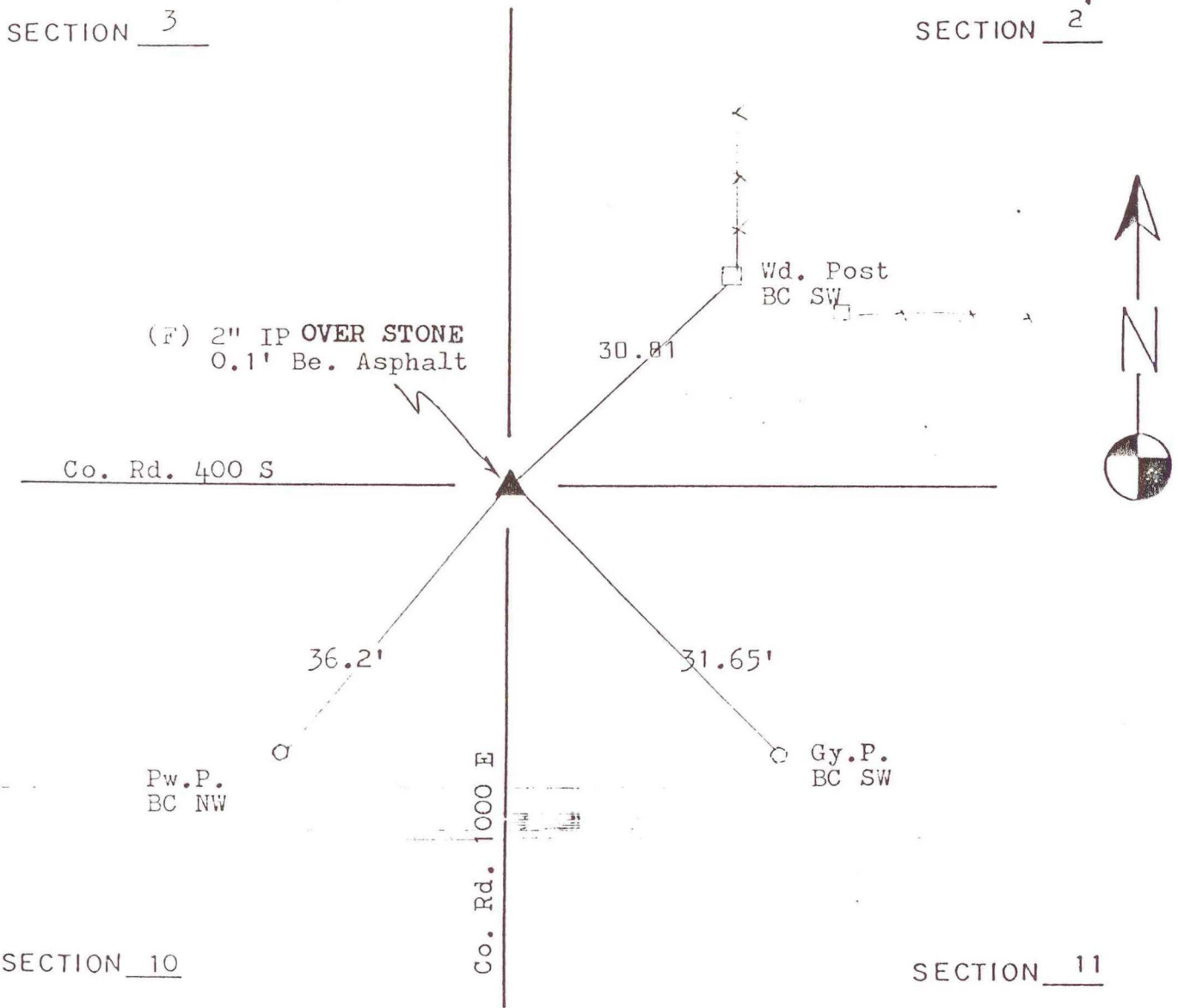


NORTH BEND TOWNSHIP

T 32 N, R 1 W

SECTION 3

SECTION 2



SECTION 10

SECTION 11

DATE	BY	DATE	BY
JUN 1982	ISHD		
02 Jul 1985	VHJ		
10-13-89	VHJ		

CORNER OF: RECORD USE

SOURCE OF INFORMATION:

INDIANA STATE HIGHWAY DEPARTMENT (FILE)
TERRITORIAL ENGINEERING FIELD NOTES

E-17