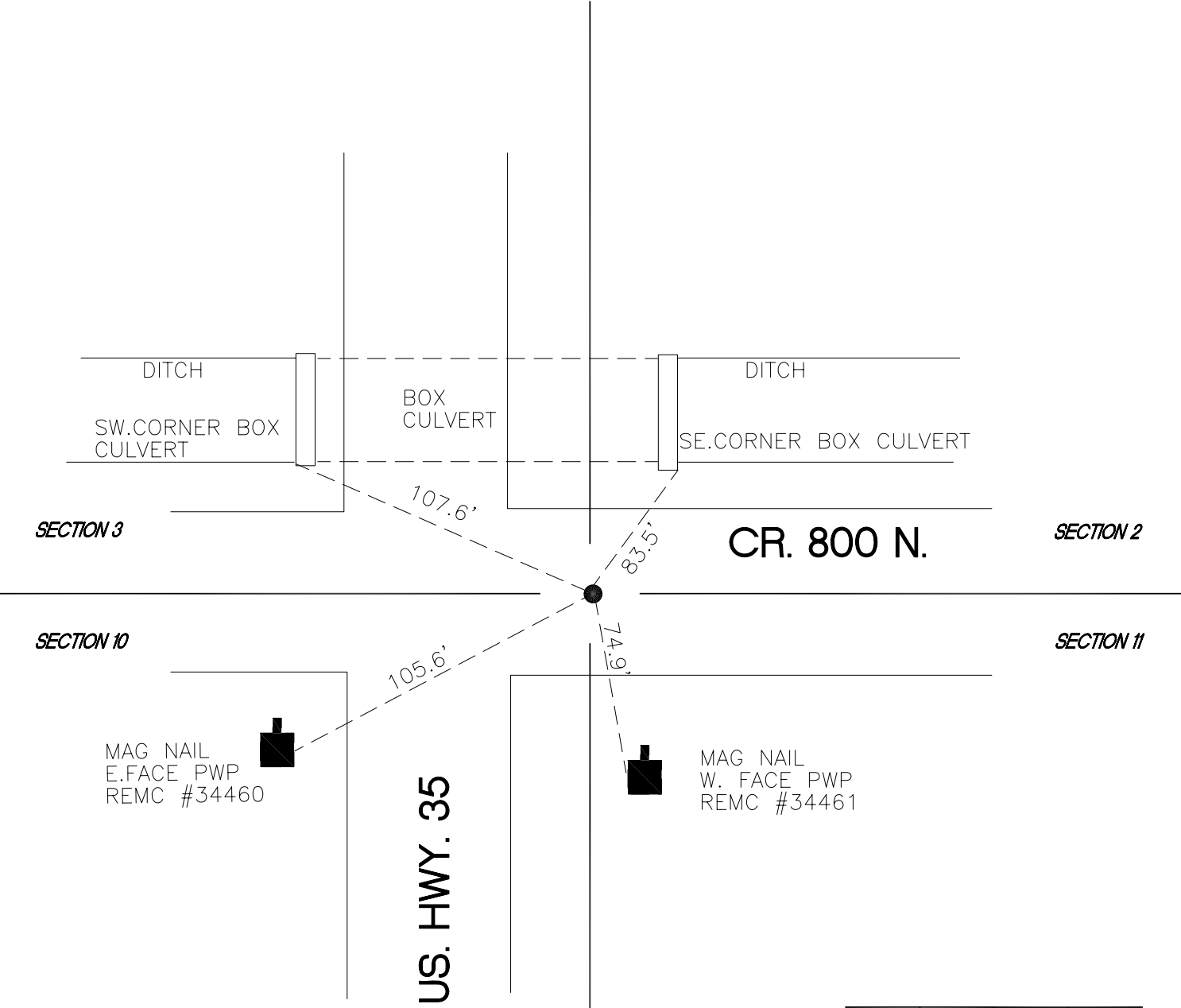


DAVIS TOWNSHIP

T 34 N, R 2 W

E17



SECTION 3

SECTION 2

CR. 800 N.

SECTION 10

SECTION 11

MAG NAIL
E. FACE PWP
REMC #34460

US. HWY. 35

MAG NAIL
W. FACE PWP
REMC #34461

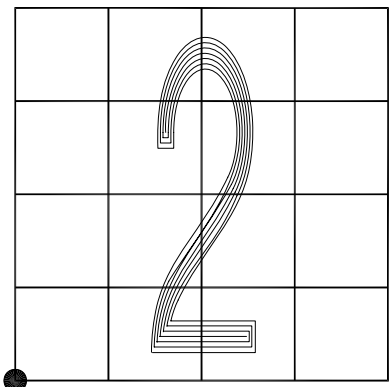
MONUMENT: (F) 1" IRON ROD

CORNER OF: RECORD USE

PARTY: DPS/AJR

DATE: AUGUST 2017

COMMENTS: NONE



CORNER LOCATION IN THE SECTION