

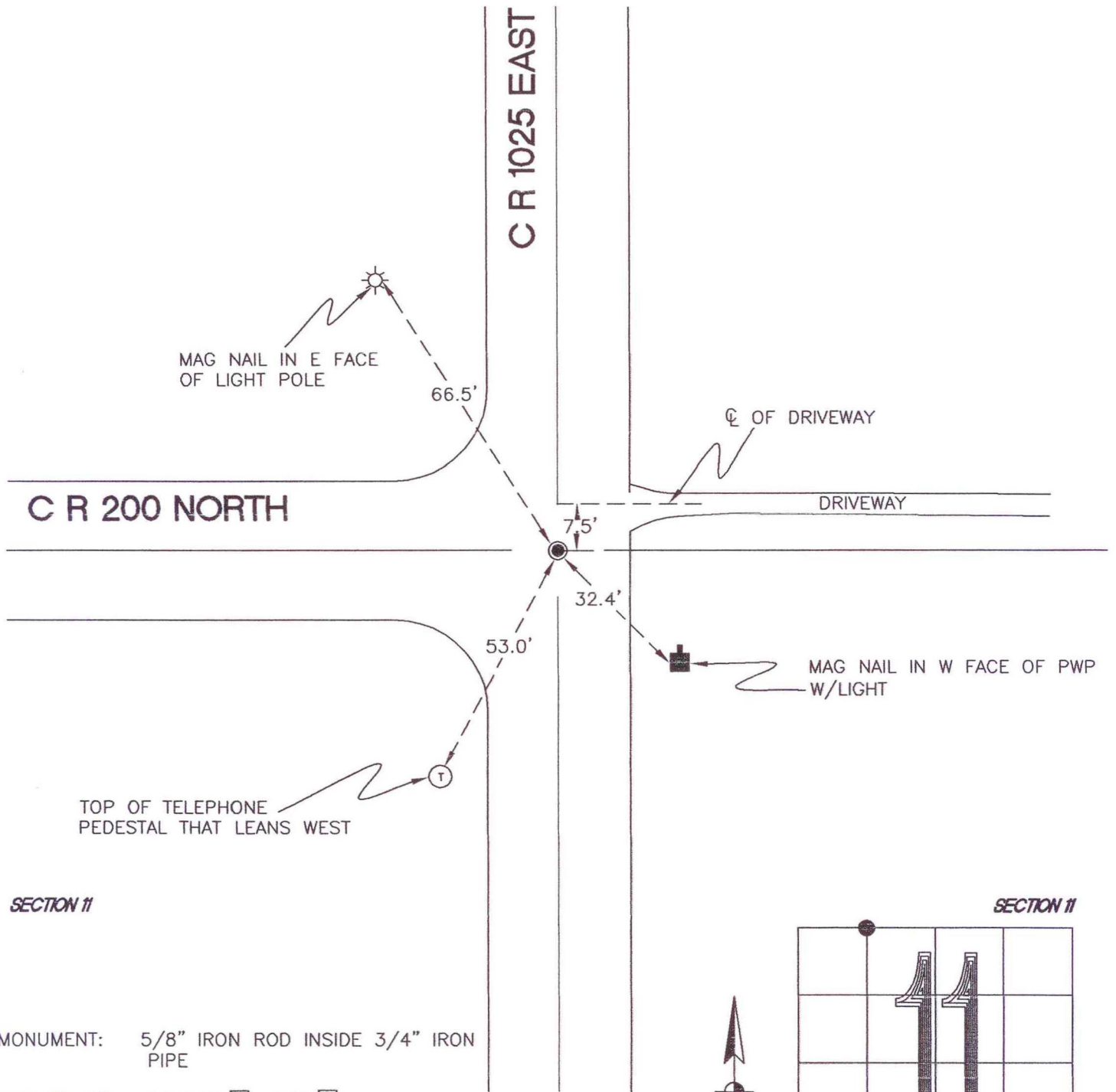
WASHINGTON TOWNSHIP

T 33 N, R 1 W

E18

SECTION 2

SECTION 2



SECTION 11

SECTION 11

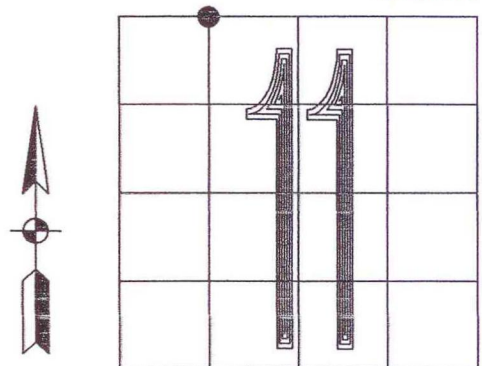
MONUMENT: 5/8" IRON ROD INSIDE 3/4" IRON PIPE

CORNER OF: RECORD USE

PARTY: DPS/JL

DATE: 2-5-2008

COMMENTS: REPLACED BENT 3/4" IRON PIPE FOUND IN 1986 WITH CURRENT MONUMENT. ESTABLISHMENT OF NEW MONUMENT WAS BASED ON DISTANCES FROM OLD REFERENCE WITNESSES.



CORNER LOCATION IN THE SECTION

E18