

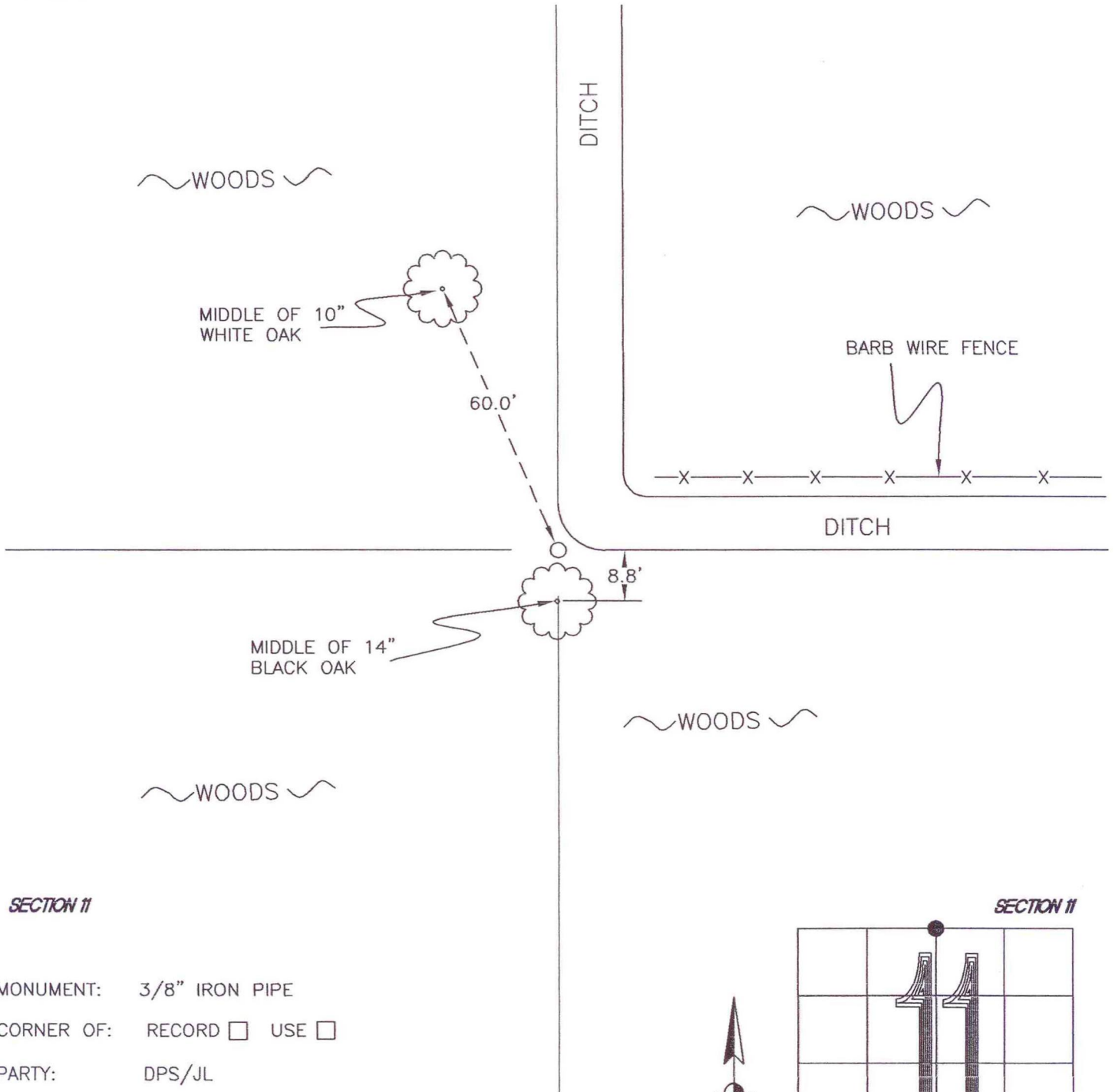
WASHINGTON TOWNSHIP

T 33 N, R 1 W

E19

SECTION 2

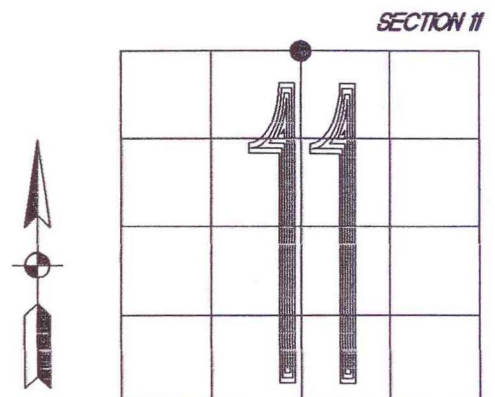
SECTION 2



SECTION 11

MONUMENT: 3/8" IRON PIPE
CORNER OF: RECORD USE
PARTY: DPS/JL
DATE: 2-5-2008

COMMENTS: T POST NEXT TO MONUMENT.
MONUMENT LINES UP WITH S AND W
EDGES OF THE DITCH.
IT'S UNKNOWN WHEN THIS MONUMENT WAS
ESTABLISHED. IT WAS HONORED AS THE NW
CORNER OF NE 1/4 OF SEC 11 BY TERRITORIAL
ENGINEERING IN SURVEY # G01196 IN 2001.



CORNER LOCATION IN THE SECTION

E19