

JACKSON TOWNSHIP

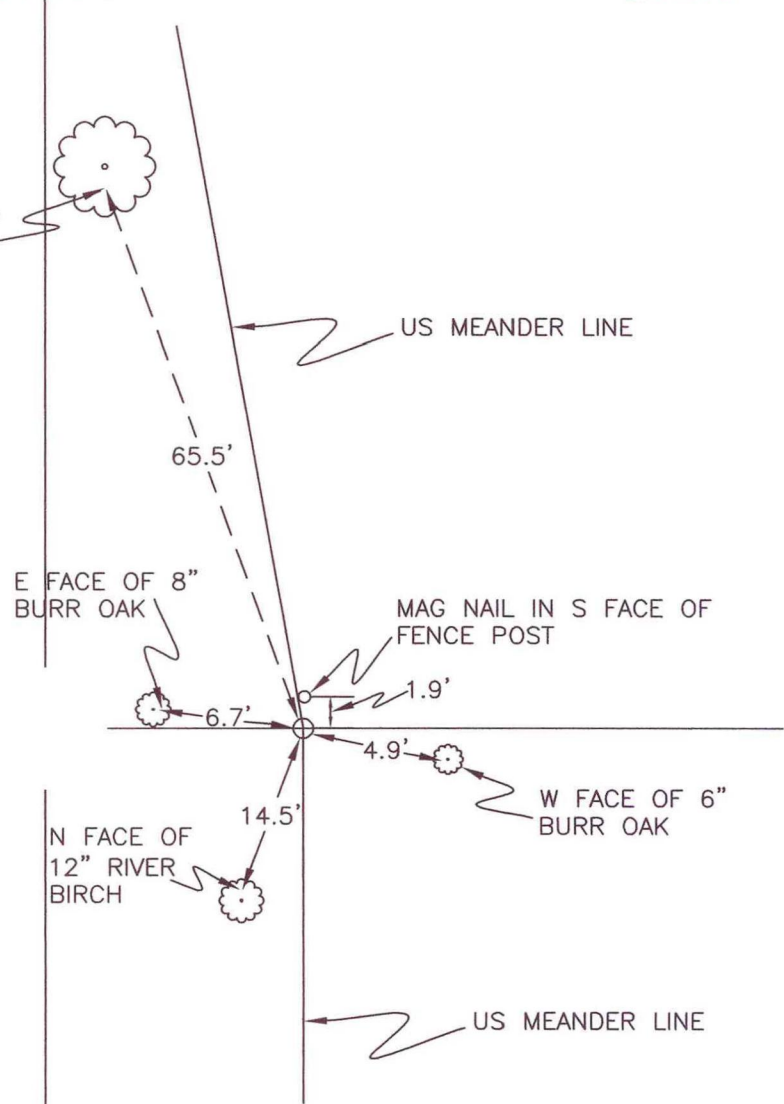
T 33 N, R 3W

E19.3

SECTION 2

SECTION 2

N FACE OF 60" BURR OAK



E FACE OF 8" BURR OAK

MAG NAIL IN S FACE OF FENCE POST

1.9'

65.5'

6.7'

4.9'

W FACE OF 6" BURR OAK

N FACE OF 12" RIVER BIRCH

14.5'

US MEANDER LINE

SECTION 11

SECTION 11

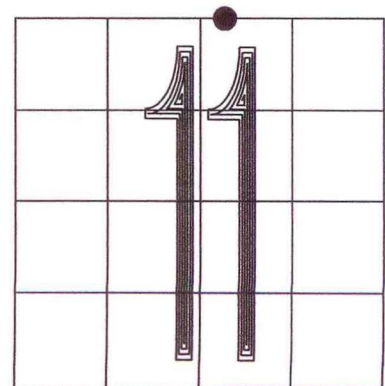
MONUMENT: 3/4" IRON PIPE

CORNER OF: RECORD USE

PARTY: JL/PM

DATE: 5-9-2007

COMMENTS: 12" ABOVE GRADE
2277.72' W OF NE CORNER OF SECTION 11
US MEANDER LINE CROSSES THE SECTION LINE HERE



E19.3

CORNER LOCATION IN THE SECTION