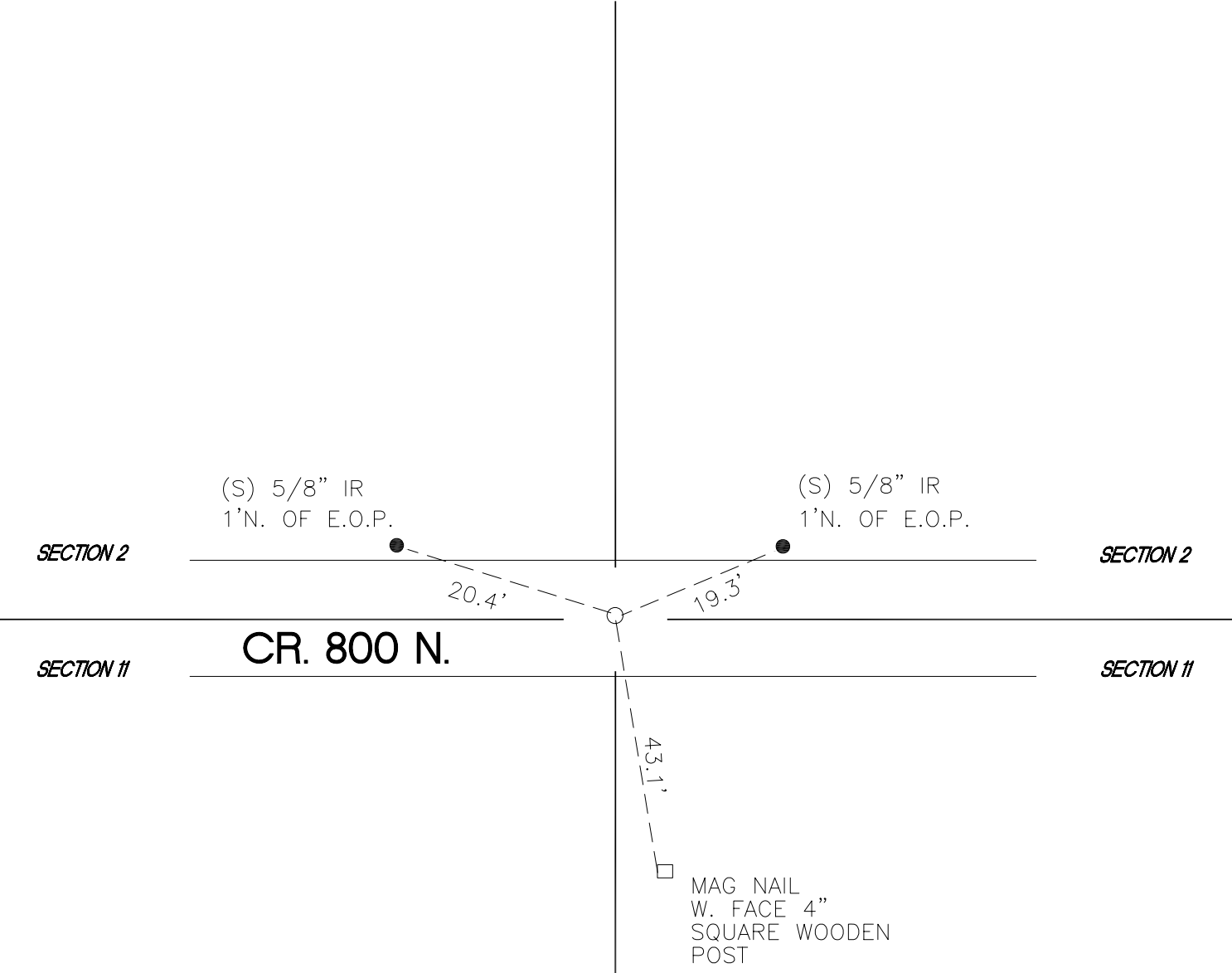


DAVIS TOWNSHIP  
T 34 N, R 2 W  
E19



SECTION 2

SECTION 2

SECTION 11

SECTION 11

CR. 800 N.

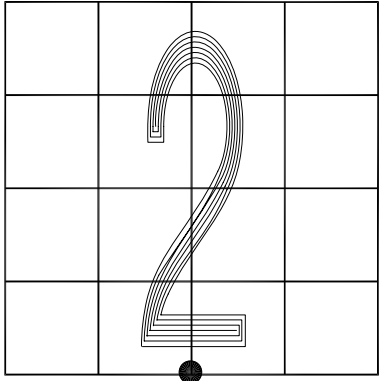
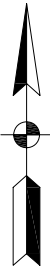
MONUMENT: (F) 1 1/4" IRON PIPE

CORNER OF: RECORD  USE

PARTY: DPS/AJR

DATE: AUGUST 2017

COMMENTS: POINT 2' N. OF CL CR.  
1 1/4" IRON PIPE WAS SET IN 1989  
OVER ORIGINAL WOOD STAKE OF RECORD



CORNER LOCATION IN THE SECTION