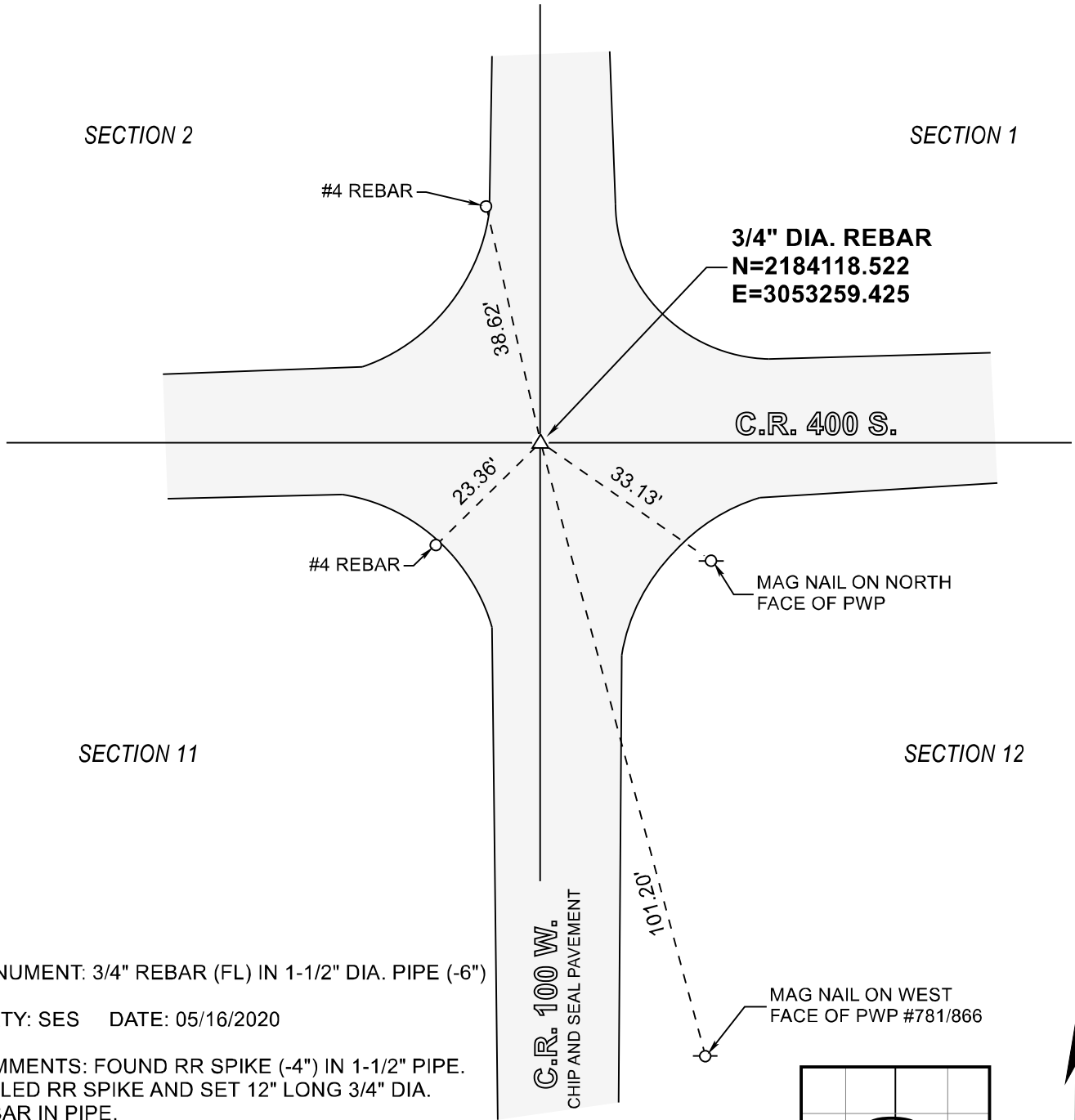


STARKE COUNTY SECTION CORNER RECORD

WAYNE TOWNSHIP

T 32 N, R 3 W

E21



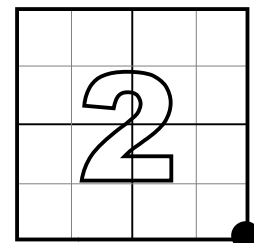
MONUMENT: 3/4" REBAR (FL) IN 1-1/2" DIA. PIPE (-6")

PARTY: SES DATE: 05/16/2020

COMMENTS: FOUND RR SPIKE (-4") IN 1-1/2" PIPE.
PULLED RR SPIKE AND SET 12" LONG 3/4" DIA.
REBAR IN PIPE.

COMMENTS FROM 3/11/03 BY VHJ, DWC, BJ: RR
SPIKE IN CENTER OF I. PIPE (0.2' B.G.). (F) 1-1/2" I.
PIPE (0.4' B.G.)

COORDINATE DATUM: INDIANA STATE PLANE WEST NAD83(2011).
Coordinates shown on this sheet are for informational purposes only, and
are not to be use in lieu of measurements by a professional surveyor.



CORNER LOCATION
IN SECTION



NOT TO
SCALE