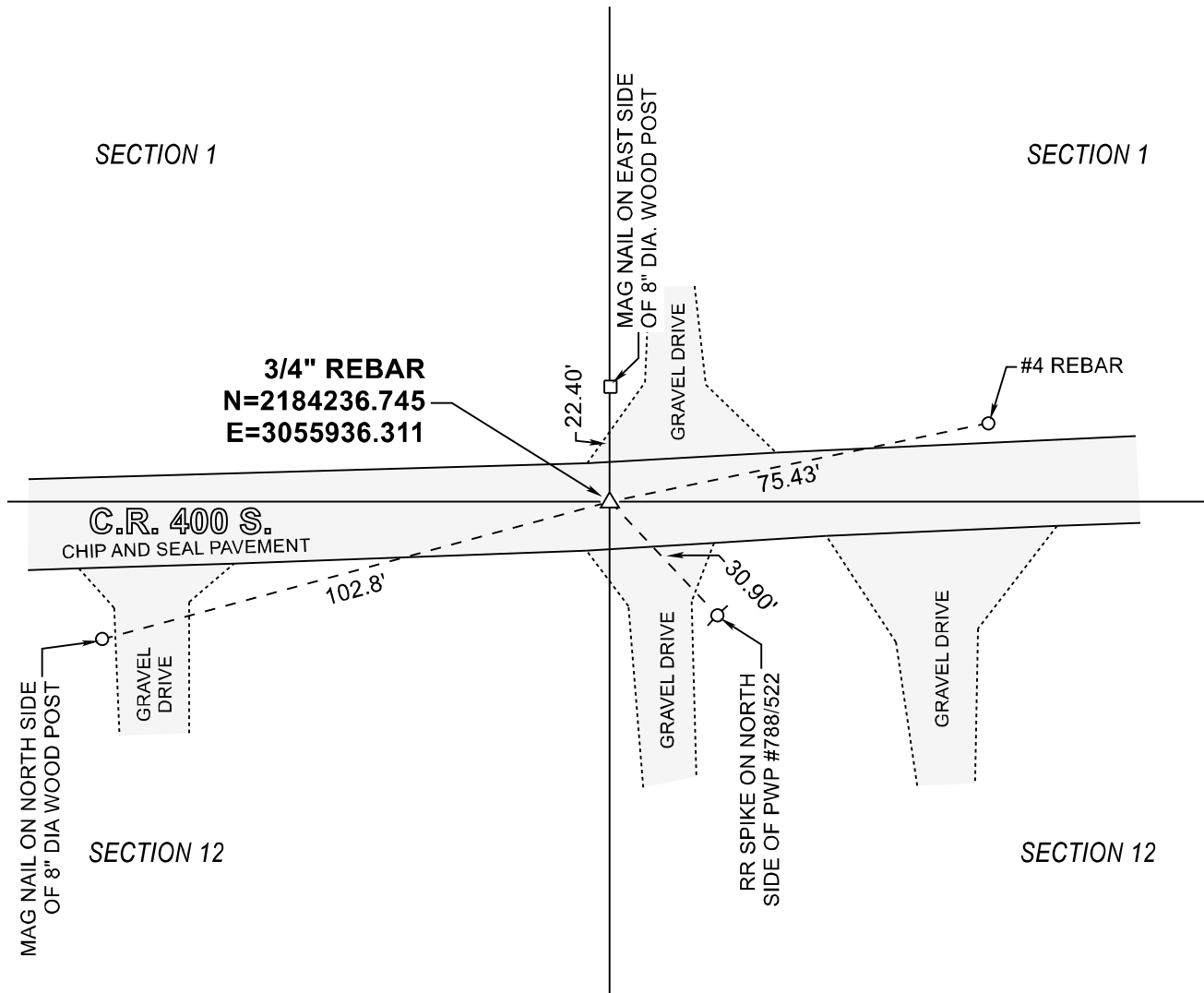


STARKE COUNTY SECTION CORNER RECORD

WAYNE TOWNSHIP

T 32 N, R 3 W

E23

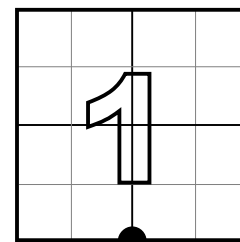


MONUMENT: 3/4" REBAR

PARTY: SES DATE: 04/18/2020

COMMENTS: RECOVERED 3/11/03 BY VHJ, DWC, BJ.

COORDINATE DATUM: INDIANA STATE PLANE WEST NAD83(2011).
Coordinates shown on this sheet are for informational purposes only, and
are not to be use in lieu of measurements by a professional surveyor.



CORNER LOCATION
IN SECTION



NOT TO
SCALE