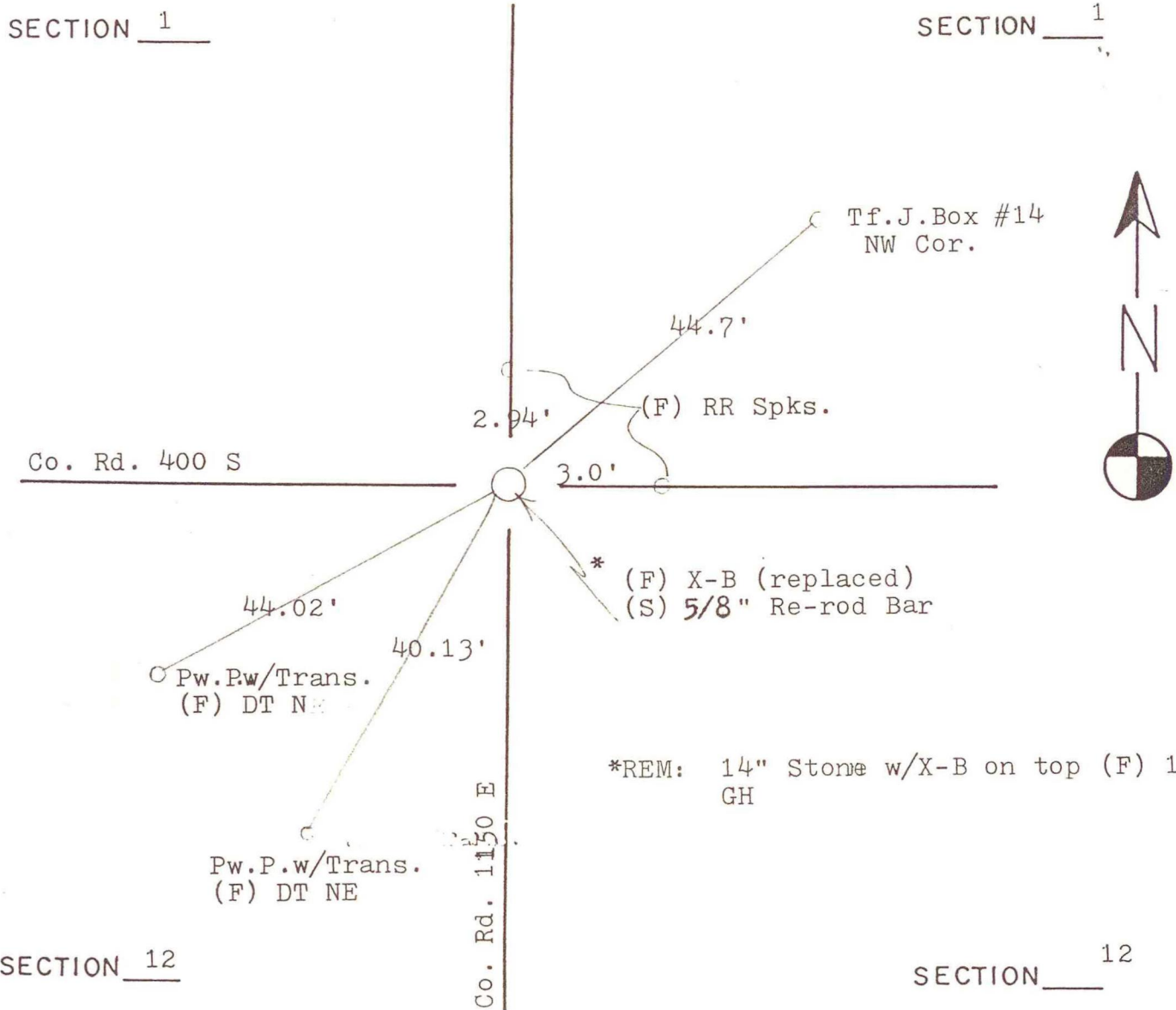


NORTH BEND TOWNSHIP

T 32 N, R 1 W

SECTION 1

SECTION 1



*REM: 14" Stone w/X-B on top (F) 1977
GH

SECTION 12

SECTION 12

DATE	BY	DATE	BY
08Sep1977	GH		
03Aug1984	RLP		
May1986	VHJ		

CORNER OF: RECORD USE

SOURCE OF INFORMATION:

File
Field Book M-9, page 83
Territorial Engineering Field Notes

E-23