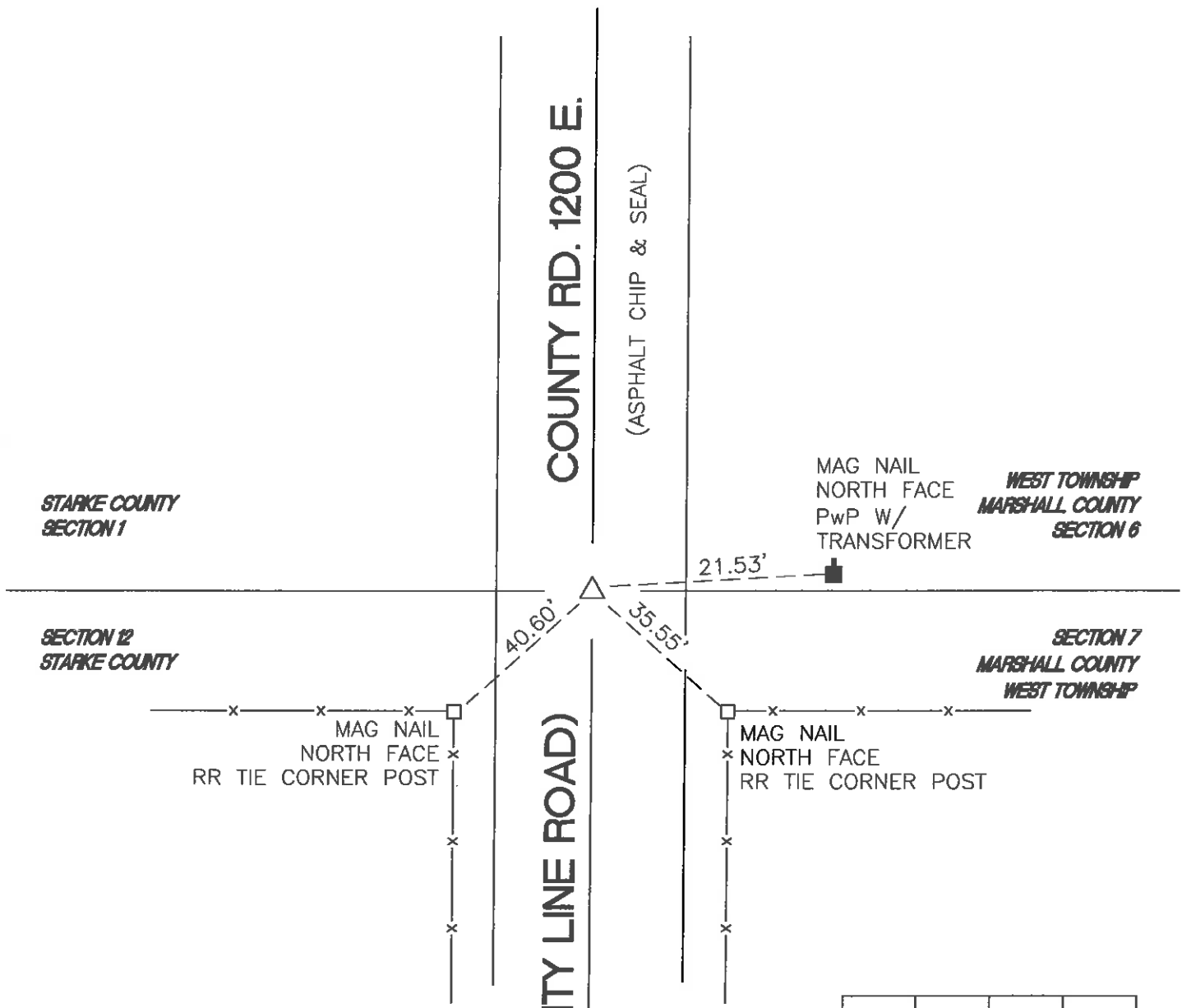


WASHINGTON TOWNSHIP

T 33 N, R 1 W



STARKE COUNTY
SECTION 1

WEST TOWNSHIP
MARSHALL COUNTY
SECTION 6

SECTION 12
STARKE COUNTY

SECTION 7
MARSHALL COUNTY
WEST TOWNSHIP

MAG NAIL
NORTH FACE
RR TIE CORNER POST

MAG NAIL
NORTH FACE
RR TIE CORNER POST

MONUMENT: (F) ALUM DISC SECTION MONUMENT

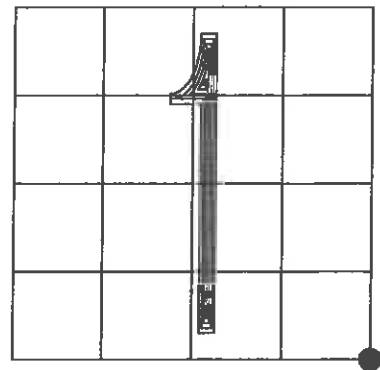
CORNER OF: RECORD USE

PARTY: DPS/TAB

DATE: 1-12-04

COMMENTS:

INDEX NUMBER
E25



CORNER LOCATION IN THE SECTION